

Nokia N9 User Guide

Contents**Safety****4****Get started****6**

Keys and parts

6

Insert the SIM card and charge the battery

8

First start-up

12

Find more help

14

Basic use**16**

Home views and status area

16

Touch screen

20

Write text

23

Control profiles, tones, and volume

25

Search your phone

27

Explore Nokia's Ovi services

27

Personalisation**29**

Change the wallpaper

29

View notifications and feeds

29

Connectivity**30**

Internet connections

30

WLAN

32

NFC

33

Bluetooth

35

USB data cable

37

Web and RSS feeds**38**

Web browser

38

RSS feeds

39

Contacts and social networking friends**41**

Contacts

41

Social networking friends

43

Calls**46**

Ways to make calls

46

Call a phone number

46

Call a contact

46

Make a conference call

46

Answer or decline calls

47

Answer a call

48

Reject a call

48

Turn to silence

48

Divert calls to your voice mailbox or another phone number

49

Call your voice mailbox

49

During a call

49

Activate the loudspeaker during a call

50

Answer a waiting call

50

Recent calls

50

View your missed calls

51

View your received calls

51

Call the last dialled number

51

About internet calls

51

Install an internet call service

52

Sign in to an internet call service

52

Make an internet call

52

Set your availability status

53

Messaging and social networks**54**

Set up all your accounts in one go

54

Messages

54

Mail

56

Mail for Exchange

57

Music and videos**60**

Music player

60

Videos

61

Camera and Gallery**64**

Take pictures

64

Record videos

67

Send and share pictures and videos

67

Gallery

69

Image editor

72

Maps and navigation**73**

GPS

73

Maps

74

Drive	83
Productivity and time	85
Time management	85
Productivity	88
Phone management	90
Keep your phone software and applications up to date	90
Back up	91
Manage applications	92
Memory	93
Synchronise content	94
Protect your phone	95
Reset your phone	97
Battery	98
Tips	100
Access codes	100
Send your security code to a trusted person	101
Protect the environment	102
Save energy	102
Recycle	102
Product and safety information	102
Index	110

Safety

Read these simple guidelines. Not following them may be dangerous or illegal. For further information, read the complete user guide.

SWITCH OFF IN RESTRICTED AREAS



Switch the device off when mobile phone use is not allowed or when it may cause interference or danger, for example, in aircraft, in hospitals or near medical equipment, fuel, chemicals, or blasting areas. Obey all instructions in restricted areas.

ROAD SAFETY COMES FIRST



Obey all local laws. Always keep your hands free to operate the vehicle while driving. Your first consideration while driving should be road safety.

INTERFERENCE



All wireless devices may be susceptible to interference, which could affect performance.

QUALIFIED SERVICE



Only qualified personnel may install or repair this product.

BATTERIES, CHARGERS, AND OTHER ACCESSORIES



Use only batteries, chargers, and other accessories approved by Nokia for use with this device. Third-party chargers that comply with the IEC/EN 62684 standard, and that can connect to your device micro USB connector, may be compatible. Do not connect incompatible products.

KEEP YOUR DEVICE DRY



Your device is not water-resistant. Keep it dry.

GLASS PARTS



The front cover of the device is made of glass. This glass can break if the device is dropped on a hard surface or receives a substantial impact. If the glass breaks, do not touch the glass parts of the device or attempt to remove the broken glass from the device. Stop using the device until the glass is replaced by qualified service personnel.

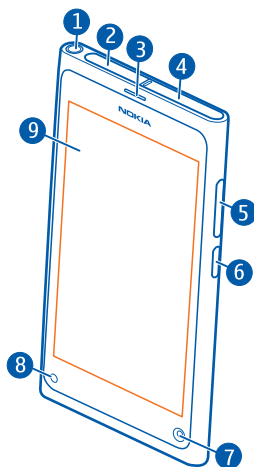
PROTECT YOUR HEARING

Listen to a headset at a moderate level, and do not hold the device near your ear when the loudspeaker is in use.

Get started

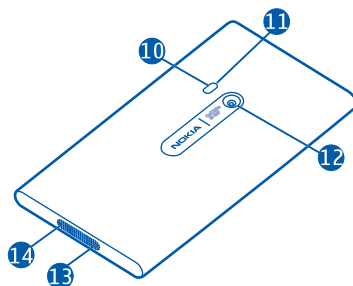
Keys and parts

Front



- 1 Nokia AV connector (3.5 mm)
- 2 Micro-USB connector
- 3 Earpiece
- 4 SIM card holder
- 5 Volume/Zoom key. Used also to change the profile.
- 6 Power/Lock key
- 7 Front camera lens
- 8 Charging indicator
- 9 Touch screen

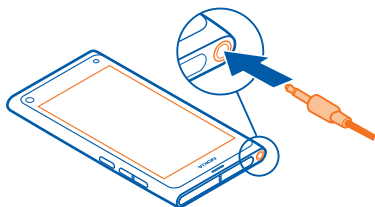
Back



- 10 Camera flash
- 11 Secondary microphone
- 12 Camera lens. If there is protective tape on the camera lens, remove the tape.
- 13 Microphone
- 14 Loudspeaker

Headset

You can connect a compatible headset or compatible headphones to your phone.



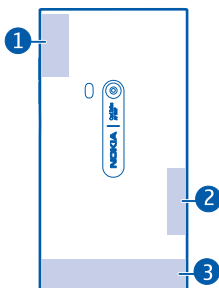
Control music with your headset

To pause or resume playback, press the button on the headset. To skip to the next song, press the button for about two seconds.

Do not connect products that create an output signal, as this may damage the device. Do not connect any voltage source to the Nokia AV connector. If you connect an external device or headset, other than those approved by Nokia for use with this device, to the Nokia AV connector, pay special attention to volume levels.

Antenna locations

Avoid touching the antenna area while the antenna is in use. Contact with antennas affects the communication quality and may reduce battery life due to higher power level during operation.



- 1 GPS antenna
- 2 Bluetooth and WLAN antenna
- 3 Cellular antenna

Insert the SIM card and charge the battery

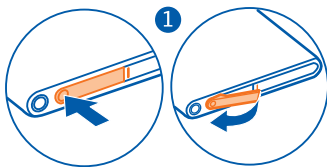
Insert the SIM card

Your phone uses a mini-UICC SIM card, also known as a micro-SIM card.

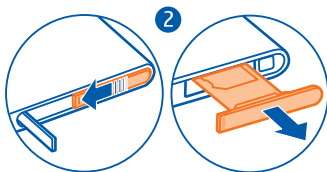
Do not attach any stickers to your SIM card.

- 1 To open the cover of the micro-USB connector, press the left end of the cover.





- 2 To unlock the SIM card holder, slide the holder to the left. Carefully pull out the holder.



- 3 Make sure the contact area is facing up, and insert the SIM card into the SIM card holder.



- 4 Insert the SIM card holder back into the phone. To lock the SIM card holder, slide the holder to the right.



- 5 Close the cover of the micro-USB connector.

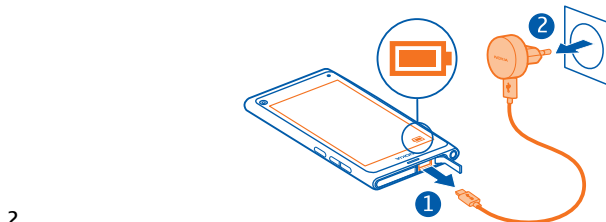
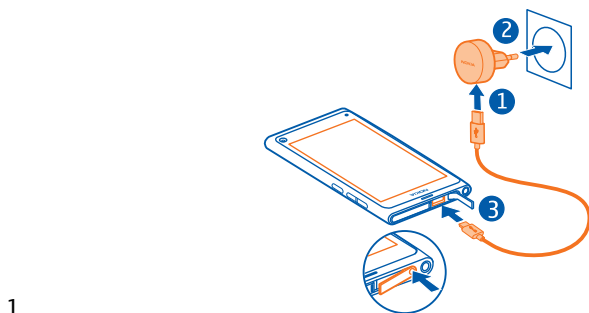
Remove the SIM card

- 1 Open the cover of the micro-USB connector.
- 2 To unlock the SIM card holder, slide the holder to the left. Carefully pull out the holder.
- 3 Pull the card out.

Charge the battery

Your battery has been partially charged at the factory, but you may need to recharge it before you can switch on your phone for the first time.

If the phone indicates a low charge, do the following:



You do not need to charge the battery for a specific length of time, and you can use the phone while it is charging.

When the battery is charging, the notification light flashes slowly. When the battery is full, the notification light is continuously on.

If the battery is completely discharged, it may take several minutes before the charging indicator is displayed or before any calls can be made.

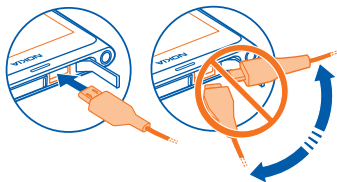
Charge the battery over USB

Battery low, but you don't have a charger with you? You can use a compatible USB cable to connect your phone to a compatible device, such as a computer.

You can use USB charging when a wall outlet is not available. Data can be transferred while charging the device. The efficiency of USB charging power varies significantly, and it may take a long time for charging to start and the device to start functioning.

You can use your phone while it's charging.

To avoid breaking the charger connector, be careful when connecting or disconnecting the charger cable.




About the battery

Your phone has an internal, nonremovable, rechargeable battery. Use only Nokia approved chargers designated for this phone. You can also use a compatible USB data cable to charge your phone.

Do not attempt to remove the battery from the device. To replace the battery, take the device to your nearest authorised service facility.

Authorised retail points may also offer a battery replacement service.

To check the condition of the battery, select  and **Device > Battery**.

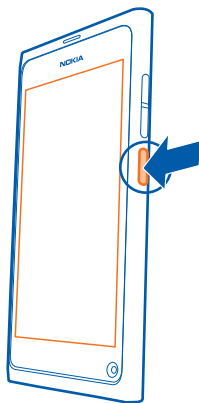
You can set your phone to automatically activate power save mode when the battery charge level is low. Select  and **Device > Battery > Power saver mode**, and activate **Automatic**.

When power save mode is activated, you may not be able to modify the settings of certain applications.

First start-up

Switch the phone on or off

Press and hold the power key until the phone vibrates.



Use your phone for the first time

Your phone guides you through the initial setup when you insert your SIM card and switch your phone on for the first time. To use all of Nokia's Ovi services, create a Nokia account. You can also subscribe to the Tips and Offers service, to receive helpful tips and tricks on how to make the most of your phone.

To create a Nokia account, you need an internet connection. For information about data transmission charges, contact your service provider. If you can't connect to the internet, you can create an account later.

Tip: To create and manage your Nokia account on the internet, go to www.ovi.com.

If you already have a Nokia account, sign in.

Tip: Forgotten your password? You can request it to be sent to you in a mail or text message.

To create a Nokia account later, use your phone to access an Ovi service, and you are prompted to create an account.

To make an emergency call during the initial setup, select .

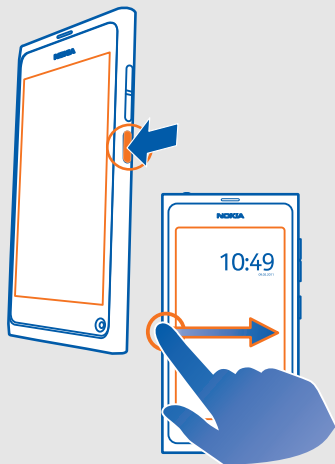
Lock the keys and screen

To avoid accidentally making a call when your phone is in your pocket or bag, lock the keys and screen of your phone.

Press the power key.

Unlock the keys and screen


Press the power key, and swipe from the outside of the screen onto the screen. You can swipe from any direction.



Tip: You can also tap the screen twice, and swipe from the outside of the screen onto the screen.

Tip: Received a notification on the lock screen? To go straight to the related application, drag the notification to the left or right edge of the screen.

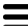

Set the keys and screen to lock automatically

- 1 Select  and **Device > Display > Display time-out**.
- 2 Select the length of time after which the keys and screen are locked automatically.

Copy contacts from your old phone

If your contacts list is empty, apart from your voice mailbox number, you can easily copy your contacts from your previous compatible phone.

Select , and follow the instructions.

Tip: To copy your contacts later, in the contacts list, select  > **Import contacts from**. To copy your calendar events and text messages, select  > **Sync and backup** > **Sync**. The available options may vary.

Install Nokia Link on your computer

Have your favourites with you, wherever you may roam. Use the Nokia Link computer application to sync content between your phone and your compatible computer.


To download and install Nokia Link on your computer, go to www.nokia.com/nokialink.

Find more help

Use the user guide in your phone

Select .

Search the user guide


Select , and start entering a word in the search field.

Switch between the user guide and an application

To return to the home view, swipe from the outside of the screen onto the touch screen. To open the desired application, select the application from the Applications or Open applications view.

Links to related topics may be at the end of instructions.

Support

When you want to learn more about how to use your product or you are unsure how your phone should function, read the user guide in your phone. Select .

You may also be interested in the Nokia Support Video channel in YouTube.

If this does not resolve your issue, do one of the following:

- Reboot your phone. Press and hold the power key for at least 8 seconds. The phone switches off. To switch your phone on again, press the power key.
- Update your phone software
- Restore the original factory settings

If your issue remains unsolved, contact Nokia for repair options. Go to www.nokia.com/repair, or in Latin America, www.nokia-latinoamerica.com/centrosdeservicio. Before sending your phone for repair, always back up your data.

For additional product support information, see the warranty and reference leaflet included with your Nokia device.

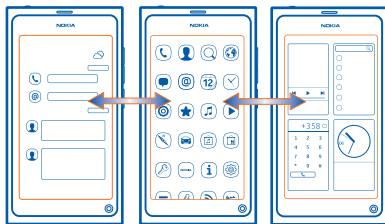
Basic use

Home views and status area

Switch between views

Your phone has separate views for applications, notifications and feeds, and for open applications.

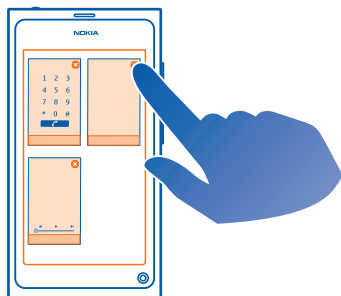
Flick left or right.



- In the Events view, you receive notifications of messages and missed calls. Feeds from different applications or services are also displayed.
- In the Applications view, you can open applications.
- In the Open applications view, you can switch between open applications and tasks, and close applications you're not using.

Close an application

Tap and hold the Open applications view, and select  on the application.




Switch between open applications

In the Open applications view, you can see which applications and tasks are open in the background, and switch between them.

Select the desired application.

Tip: To see an overview of open applications, place two fingers on the screen, and slide your fingers together. To return to the more detailed view, slide your fingers apart.

Applications running in the background increase the demand on battery power and use memory. To close an application that you are not using, tap and hold the Open applications view, and select  on the application to close.

Open the status menu to access common settings

You don't have to navigate long paths to, for example, open, switch, or close an internet connection, or change your availability status. You can access these settings directly in the status menu, no matter what application or view you are in.



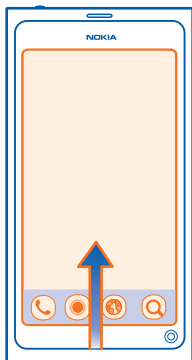
Tap the status area.

Close the status menu

Tap the status area.

Open the quick launch bar to access common applications

In all applications, and even on the lock screen, you can easily make a call, or access the camera, web, or messages.



When holding your phone upright, drag your finger from below the bottom of the screen onto the screen, and hold your finger in place, until the quick launch bar is displayed.

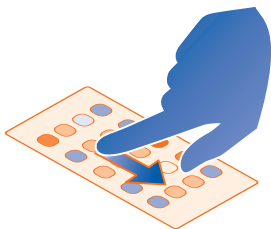
Close the quick launch bar

Tap outside the quick launch bar.

Reorganise the Applications view

Did you know that you can personalise the Applications view? Move your favourite applications to the top of the view.

Select and hold the application icon, and drag it to the desired location.






Remove an application

Select and hold the application icon, and select .




You may not be able to remove some applications.

Status area indicators



General indicators

-  You have new notifications, for example, new messages or missed calls.
-  An alarm is set.
-  The silent profile is activated.












Call indicators

-  A call is active.
-  A call is active. Your microphone is muted.
-  Your calls are diverted to another number or your voice mailbox.






Availability indicators

-  Your availability status is online.
-  Your availability status is busy.

Network indicators

-  You have a GSM data connection (network service).  indicates that data is being transferred.
-  You have an EGPRS data connection (network service).  indicates that data is being transferred.
-  You have a 3G data connection (network service).  indicates that data is being transferred.
-  You have an HSPA data connection (network service).  indicates that data is being transferred.
-  Signal strength
-  Your phone is connected to a WLAN.
-  There are no available networks.

Connectivity indicators

-  The SIM card is not available. The card is not inserted or the PIN code has not been entered.
-  Flight mode is activated.
-  Bluetooth is activated.  indicates that data is being transferred.
-  GPS is activated.

↓ The phone is transferring content. ↓ indicates that a transfer is pending. ↓ indicates that a transfer has failed.

Touch screen

About the touch screen

To control your phone, lightly touch the screen with your fingertips. The screen does not respond when you use your fingernails.

If your fingertips are cold, the screen may not respond to your touch.

! Important: Avoid scratching the touch screen. Never use an actual pen, pencil, or other sharp object on the touch screen.

Touch screen actions

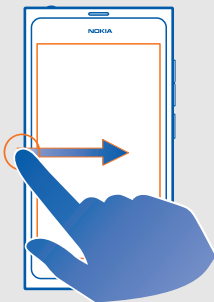
To interact with the user interface, tap or tap and hold the touch screen.

Open an application or select a screen element

Tap the application or element.

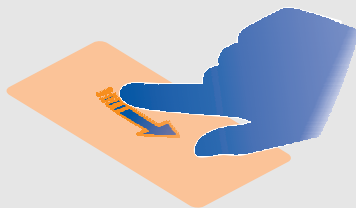
Return to the home view

To leave an application, and go back to the home view, swipe from the outside of the screen onto the touch screen. You can swipe from any direction. The application is left running in the background.



Flick

Place a finger on the screen, slide it quickly in the desired direction, and then lift your finger.



Example: To switch between home views, flick left or right. To scroll in a list or menu, slide your finger up or down.

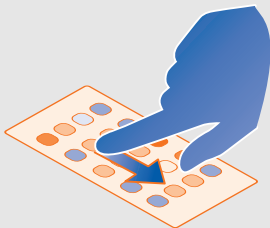
Access item-specific options

Tap and hold the item. A menu with available options opens.

Example: To send a contact card or delete an alarm, tap and hold the contact or alarm, and select the appropriate option.

Drag an item

Tap and hold the item, and slide your finger across the screen. The item follows your finger.




Example: To reorder your applications in the Applications view, tap and hold the desired application icon, and drag it to another location.

Zoom in or out

Place two fingers on an item, such as a picture or web page, and slide your fingers apart or together.



Access view-specific options


Tap  in the currently open application.

Activate or deactivate a settings switch

Tap the switch.

Set your phone to lock automatically

Want to protect your phone against unauthorised use? Define a security code, and set your phone to lock itself automatically when you're not using it.

- 1 Select  and **Security > Device lock**.
- 2 Select **Security code**, and enter a security code (at least 5 characters). You can use numbers, symbols, and upper and lower case letters.
Keep the security code secret and in a safe place separate from your phone. If you forget the security code, and cannot recover it, or you enter the wrong code too many times, your phone will require service. Additional charges may apply, and all the personal data in your phone may be deleted. For more information, contact a Nokia Care point or your phone dealer.
- 3 Select **Autolock**, and define the length of time after which the phone is locked automatically.

Unlock your phone

- 1 Press the power key, and swipe from the outside of the screen onto the touch screen. You can swipe from any direction.
- 2 Enter the security code, and select **OK**.

Tip: You can also tap the screen twice, and swipe from the outside of the screen onto the touch screen.

Tip: If you have defined a trusted person, if you ever forget your security code, you can send them the code in a text message. Select **Device lock > Trusted person > Select trusted person** and a contact from the list.

Phone lock settings

Select  and **Security > Device lock**, and from the following:

Autolock — Set the length of time before the phone locks automatically.

Security code — Change the security code. To use the phone lock, you need to define a security code.

Number of tries — Set a limit for incorrect security code attempts. After the limit is reached, the phone is reset to original settings and all user data is deleted.

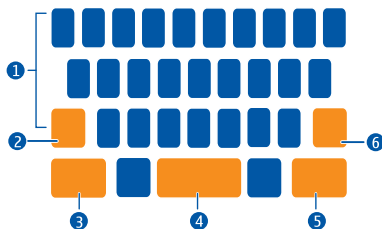
Trusted person — Set one of your contacts as a trusted person. If you have defined a trusted person, if you ever forget your security code, you can send the code to the trusted person in a text message. After entering the incorrect security code, select **Recover**, and follow the displayed instructions.

Remote security features — Set up remote lock which can be used to remotely lock your phone or erase user data if your phone gets lost.

Write text

Write with the virtual keyboard

Select a text input field.



- 1 Character keys
- 2 Shift key
- 3 Symbol key
- 4 Space key
- 5 Enter key
- 6 Backspace key

Insert an upper case character when writing in lower case, or vice versa

Select the shift key before inserting the character. To activate caps lock mode, select the key twice. The shift key is highlighted. To return to normal mode, select the shift key again.

Enter a number or a special character

Select the symbol key. To view more symbols, select the **1/2** key.

Tip: To quickly add a number or a commonly used special character, select the symbol key, and slide your finger to the character without lifting. When you lift your finger, the character is inserted, and the keyboard returns to the normal text view.

Enter an accented character

Select and hold the character to which you want to add an accent, and slide your finger to the desired accented character without lifting.

Delete a character

Select the backspace key.


Change the font

In some applications, such as Mail and Notes, you can change the font. Select the text input field, and from the pop-up menu, select the desired option. To change the font of an individual word, drag to select the word, and select **T** and the desired option.

Copy and paste text

In a text input field, drag to select the text you want to copy, and from the pop-up menu, select **Copy**. To paste the text, select the text input field, then select the place where you want to paste the text, and from the pop-up menu, select **Paste**.

Use several writing languages

Select  and **Time and language > Text input > Installed input methods** and the writing languages.

If you have selected more than one writing language, you can switch between languages.

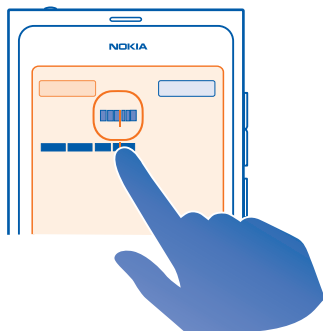
Change the writing language

Flick left or right over the virtual keyboard.

Close the virtual keyboard

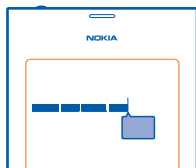
Flick the virtual keyboard down, or tap outside the text input field.

Tip: To place the cursor precisely where you want to, select and hold the text, until a magnifier is displayed. Without lifting your finger, drag the cursor to the desired location.



Write text using error correction

Error correction is based on a built-in dictionary to which you can add new words.



1

Start writing the word. The word suggestion changes after each key selection.


2 To accept a suggested word, select the suggested word.

3 To view more spelling suggestions, select and hold the suggested word.

4 To add a word to the dictionary, select and hold the suggested word, and select **Add to dictionary**.

Deactivate error correction for all editors in your phone

Select  and **Time and language** > **Text input**, and deactivate **Error correction**.

Tip: To use the space key to accept a suggested word, select  and **Time and language** > **Text input**, and activate **Insert with space key**. If you want to insert a space without accepting the suggested word, select the backspace key.

Control profiles, tones, and volume

Change the volume of a call, song, or video

Use the volume keys.

The built-in loudspeaker allows you to speak and listen from a short distance without having to hold the phone to your ear.

Activate or deactivate the loudspeaker during a call

Select .


Change your profile for meetings


Waiting for a call but can't let your phone ring? You can set your phone to discreetly beep once instead of ringing.

Open the status menu, and drag the profile slider to **Beep**.

Tip: You can also use the volume keys to change the current profile. Press the volume keys up or down until the desired profile is displayed.

This is possible in views where the key is not used for controlling volume or zoom level.

Tip: You can personalise the ringtones or sound volume, and select whether the phone vibrates when you receive a call. Select  and **Sounds and vibration**.

Tip: Download more ringtones from Ovi Store. Select  and **Sounds and vibration** > **Ringtone** > **Get more from Ovi Store**. For more information about Ovi services, go to www.ovi.com.

Use your phone offline

In places where you do not want to make or receive calls, you may still access your calendar, music, and offline games if you activate flight mode. Switch the phone off when mobile phone use is not allowed or when it may cause interference or danger.

Select , and activate **Flight mode**.

When flight mode is activated, you can still connect to a WLAN to, for example, read your mail or browse the internet. You can also activate Bluetooth and NFC.

Remember to comply with the instructions and safety requirements given by, for example, an airline, and any applicable laws and regulations.

Silence your phone


When the silent profile is activated, your phone tones are muted. Activate this profile when you are, for example, at the cinema or in a meeting.

Open the status menu, and drag the profile slider to **Silent**.


When the silent profile is activated, alarm tones still sound. You can also, for example, listen to music.

Search your phone

Explore your phone and the internet. As you enter your search word, search starts narrowing down the results for you, listing suggestions such as help topics, apps, music, videos and much more.


- 1 Select .
- 2 Start entering a search word, and select from the proposed matches.
- 3 To search on the internet, select the internet search link at the end of the search results.

Search from within an application

Select , start entering a search word, and select from the proposed matches. This is not available in all applications.

Explore Nokia's Ovi services

Ovi by Nokia

 With Ovi by Nokia, you can find new places and services, and stay in touch with your friends. You can do, for example, the following:

- Download games, applications, videos, and ringtones to your phone
- Find your way with free walk and drive navigation, plan trips, and view locations on a map
- Get a free Ovi Mail powered by Yahoo! account
- Get music

Some items are free of charge, others you may need to pay for.

The available services may also vary by country or region, and not all languages are supported.

To access Nokia's Ovi services, go to www.ovi.com, and register your own Nokia account.

For more information, go to the support section at www.ovi.com.

Nokia account

When you switch on your phone for the first time, your phone guides you through creating a Nokia account.

With your Nokia account, you can, for example:

- Access all of Nokia's Ovi services with a single username and password, both on your phone and a compatible computer
- Download content from Ovi by Nokia

- Save details about your phone model and contact information. You can also add your payment card details.
- Save you favourite places to Ovi Maps

To learn more about Nokia account and Ovi services, go to www.ovi.com.

To create a Nokia account later, use your phone to access an Ovi service, and you are prompted to create an account.

About the Ovi Maps web service

 With the Ovi Maps web service, you can view locations from all around the world.

You can do the following:

- Search for addresses, places of interest, and services
- Create routes, and get turn-by-turn directions
- Save your favourite places and routes to your Nokia account
- Synchronise your favourites with your compatible Nokia phone, and access them on the go.


To use the Ovi Maps web service, go to www.ovi.com.


About Ovi Music

With Ovi Music, you can download songs to your phone and your compatible computer.

To start discovering music, go to www.ovi.com.

About Ovi Store



 You can download mobile games, applications, videos, pictures, and ringtones to your phone. Some items are free of charge; others you need to pay for with your credit card or on your phone bill. The availability of payment methods depends on your country of residence and your network service provider. Ovi Store offers content that is compatible with your phone and relevant to your tastes and location.


Select , or go to www.ovi.com.

Personalisation

Change the wallpaper

Want to see your favourite landscape or pictures of your family in the background of the lock screen? You can change the wallpaper to personalise the lock screen to your liking.

- 1 Select  and the desired picture.
- 2 Tap the screen to display the toolbar, and select  > **Set as wallpaper**.
- 3 Move the cropping area, to get the best possible fit.
- 4 Select **Done**.

Tip: You can also use preinstalled pictures, or download more wallpapers from Nokia's Ovi Store. Select  and **Wallpaper**.


View notifications and feeds

Read recent posts from your social networking contacts and favourite web feeds, all in the same view with your received notifications.

The Events view contains the following:

- Notifications about, for example, your missed calls, unread messages, and software updates
- Feeds from different applications and services, such as social networking applications, and web feeds

The Events view items are interactive. Select, for example, the feed you want to view in more detail.

Example: To check and install suggested software updates, select the notification indicated with .

When you set up your social networking accounts, your friends' status updates are automatically displayed in the Events view. Similarly, when you subscribe to web feeds, your feeds are automatically displayed.

Tip: You can refresh feeds manually. In the Events view, select **Refresh**.

Remove a current feed from a certain application or service

Select and hold the feed, and select **Clear**.

This does not deactivate the feed.

Using services or downloading content may cause transfer of large amounts of data, which may result in data traffic costs.

Connectivity

Internet connections

Define how your phone connects to the internet

Does your network service provider charge you a fixed fee for data transfer, or on a pay as you use basis? To use the optimal connection method, modify the WLAN and mobile data settings.

Select  and **Internet connection** > **Connect to internet**.

If your network service provider charges you a fixed fee, the easiest method is to set your phone to connect to WLAN and mobile data connections automatically, to keep your phone constantly online.

Connect to an available WLAN

Select the WLAN connection and **Connect**.

In future, your phone connects to the WLAN automatically.

Use a mobile data connection

Select and hold the mobile data connection, and select **Use automatically**.

Stop using the connection automatically

Select and hold the connection, and select **Use manually**.


If your network service provider costs depend on the amount of data you use, you may want to select the network manually. If there are no automatically used networks available and you do something that requires an internet connection, you are asked to select a connection.

Request confirmation before using a mobile data connection when outside your home network

Select  and **Mobile network** > **Data roaming** > **Always ask**.

To set the phone to connect automatically, select **Always allow**. Connecting when abroad can raise data transfer costs substantially.

When you connect to a network for the first time, all your credentials and settings for that network are saved, so that you don't have to enter the data every time you connect.

To view a list of your automatically and manually used networks, select  and **Internet connection** > **Edit networks**.

Keep track of your data traffic

To avoid surprises with mobile data costs, you can set your phone to notify you when you have transferred a certain amount of data using your mobile data connection.

Select  and **Mobile network** > **Counters**.

View the amount of data sent and received

Select **In home network** or **When roaming**.

Get a notification when you reach a limit

Select **In home network** or **When roaming**. Activate **Data limit warning**, and enter the limit in the field.

The limit is active by default when outside the home network.

The limit is phone specific. If you use your SIM card in another phone, you need to set the limits in that phone.

Close data connections when not in use

To help save data costs, you can set your phone to close the mobile data connection when you don't need it.

Select  and **Mobile network** or **Internet connection**.

If you deactivate background connections, the internet connection is active only when you, for example, select a web link. Your phone does not activate the connection automatically, for example, to check for new mail. When outside the home network, background mobile data connections are deactivated by default.

Close background connections

Deactivate **Allow background connections**.

Close a network connection

If an application in the background is using an internet connection, you can close the connection without closing the application.

- 1 Open the status menu. Your current network connections are displayed.
- 2 Select the connection to close and **Disconnect**.

Close all network connections

Select  and activate **Flight mode**.

WLAN**About WLAN connections**

You can connect to a wireless local area network (WLAN) in the status menu. Tap the status area.

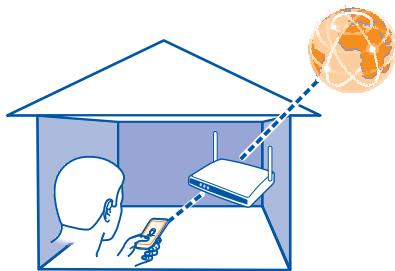
Important: Use encryption to increase the security of your Wi-Fi connection. Using encryption reduces the risk of others accessing your data.

Note: Using Wi-Fi may be restricted in some countries. For example, in France, you are only allowed to use Wi-Fi indoors. For more information, contact your local authorities.



This phone supports the 802.11a, 802.11b, 802.11g, and 802.11n WLAN protocols. You can create an 802.11n connection using either the 2.4 or 5 GHz frequency band.

Connect to a WLAN at home

To help save data costs, connect to your home WLAN when you are at home and want to browse the web on your phone.



- 1 Open the status menu, and select **No internet connection**.

You can see the available network connections.  indicates a WLAN connection, and  indicates a mobile data connection.

- 2 Select your home WLAN and **Connect**.



If your home WLAN is secured, enter the passcode.

If your home WLAN is hidden, select **Hidden WLAN** > **Connect**, and enter the network name (service set identifier, SSID).

Connect to a WLAN on the move


Connecting to a WLAN is a handy way of accessing the internet when not at home. Connect to public WLANs in public places, such as a library or internet café.

- 1 Open the status menu, and select **No internet connection**.

You can see the available network connections.  indicates a WLAN connection, and  indicates a mobile data connection.

- 2 Select the desired WLAN connection and **Connect**.

Close the WLAN connection

- 1 Select  and **Internet connection > Edit networks**.
- 2 Select the connection, and deactivate **Use automatically**.
- 3 Select **Disconnect**.

It is not possible to close an automatically used WLAN connection.

NFC

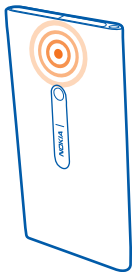
About NFC

Near Field Communication (NFC) makes connecting and sharing easy and fun. Nokia phones and accessories that support NFC are connected wirelessly when you touch them together.

With NFC, you can:

- Share your own content between two Nokia phones that support NFC
- Connect to compatible Bluetooth accessories that support NFC, such as a headset or a wireless loudspeaker

The NFC area is on the back of your phone, above the camera. Touch other phones or accessories with the NFC area.



You can use NFC when the phone screen is on.

For more information, watch the NFC tutorial videos on your phone.

Activate NFC

Select  and **Device** > **NFC**, and activate **NFC**.

Connect to a Bluetooth accessory using NFC

Touch the NFC area of the accessory with the NFC area of your phone.



Disconnect the accessory

Touch the NFC area of the accessory again.

For more information, see the user guide of the accessory.

Send a picture or video to another phone that supports NFC

You can share your own pictures and videos when you touch another Nokia phone that supports NFC.

Share a picture

- 1 Select a picture in Gallery.
- 2 Touch the NFC area of the other phone with the NFC area of your phone. The picture is sent using Bluetooth.



Bluetooth

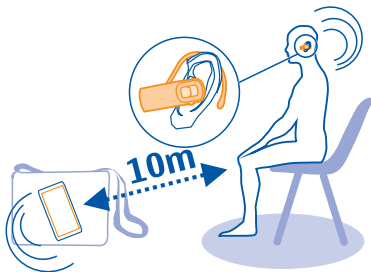
About Bluetooth connectivity

Select  and **Bluetooth**.

You can connect wirelessly to other compatible devices, such as phones, computers, headsets, and car kits.

You can use the connection to send items from your phone, and print files with a compatible printer.

Since devices with Bluetooth wireless technology communicate using radio waves, they do not need to be in direct line-of-sight. However, they must be within 10 metres (33 feet) of each other, although the connection may be subject to interference from obstructions such as walls or from other electronic devices.




When your phone is locked, only connections to authorised devices are possible.

! **Note:** There may be restrictions on the use of Bluetooth technology in some countries. For example, in France, you are only allowed to use Bluetooth technology indoors. For more information, contact your local authorities.

Connect to a wireless headset

With a wireless headset, you can answer a call even if your phone is not directly at hand, and you can have your hands free, for example, to continue working at your computer during a call. Wireless headsets are available separately.

Select  and **Bluetooth**.

- 1 Activate **Bluetooth**.
- 2 Switch the headset on.
- 3 Select **Bluetooth devices**.
- 4 To pair your phone and the headset, select the headset from the list.
- 5 You may need to enter a passcode. For details, see the user guide of the headset.


Send a picture or other content to another phone or device

You can use Bluetooth to send pictures, videos, and other content created by you to your friend's compatible phones and devices and to your computer.

You can have several Bluetooth connections active at a time. For example, if you are connected to a compatible headset, you can also send files to another compatible device at the same time.


- 1 Select and hold the item, for example, a picture, and select **Share** > **Bluetooth**.
- 2 Select the device to connect to. Bluetooth devices within range are displayed.
- 3 If the other device requires a passcode, enter the passcode. The passcode, which you can define yourself, must be entered in both devices. The passcode in some devices is fixed. For details, see the user guide of the device.

The passcode is valid only for the current connection.

Tip: If you connect to a device frequently, to set it as authorised, select  and **Bluetooth**. Make sure Bluetooth is activated. Select **Bluetooth devices** and the device, and activate **Connect automatically**. When a device is authorised, you do not have to enter the passcode every time.

Protect your phone

When Bluetooth is activated in your phone, you can control who can find and connect to your phone.

Select  and **Bluetooth**.

Prevent others from detecting your phone

Deactivate **Visibility**.

When your phone is hidden, others cannot detect it. However, paired devices can still connect to your phone.

Operating the device in hidden mode is a safer way to avoid malicious software. Do not accept Bluetooth connection requests from sources you do not trust. You can also deactivate Bluetooth function when you are not using it.

Do not pair with or accept connection requests from an unknown device. This helps to protect your phone from harmful content.

USB data cable

Copy a picture or other content between your phone and a computer

You can use a USB data cable to copy pictures, videos, music, and other content created by you between your phone and a computer.

- 1 Use a compatible USB data cable to connect your phone to a compatible computer. The phone is displayed as a portable device on your computer.
- 2 Use the file manager of the computer to copy the content.

Select the USB mode

For best results when using a USB data cable to copy content or synchronise with your computer, activate the appropriate USB mode.


- 1 Use a compatible USB data cable to connect your phone to your compatible computer or other device.
- 2 When prompted, select from the following:

Use as mass storage — Your phone is recognised as a USB flash memory. You can also connect your phone to other devices, such as a home or car stereo.

While connected to a computer in this mode, you may not be able to use some of the phone applications. It is possible to use your computer to view, copy, move, or delete the pictures, music, and other content stored on your phone.

Sync and connect — You have connected to a computer that has Nokia Link installed. In this mode, you can synchronise your phone with Nokia Link and use other Nokia Link features.

This mode is activated automatically when you open the Nokia Link application.

Tip: To set the default USB mode, used every time you connect your phone, select  and **Accessories > USB**.

Web and RSS feeds

Web browser

About the web browser

Select .

Catch up on the news, and visit your favourite websites. You can use your phone web browser to view web pages on the internet.

To browse the web, you must be connected to the internet.

Tip: In all apps, and even on the lock screen, you can easily access the web. Hold your phone upright, and drag your finger from below the bottom of the screen onto the screen. Hold your finger in place, until the quick launch bar is displayed.

Browse the web

Select .

Tip: If your service provider does not charge you a fixed fee for data transfer, to save data costs in your phone bill, you can use a WLAN to connect to the internet.

Go to a website

Select from your most visited websites, or select the web address bar, and enter a web address.

Tip: To search the internet, select the web address bar, enter a search word, and select the search word below the web address bar.

Open a new browser window

Select  > **Open new window.**

Zoom in or out

Place two fingers on the screen, and slide your fingers apart or together.


Tip: To quickly fit a section of a web page to your phone display, double-tap the screen.

Send a web link

Select  > **Share this page** and the sharing method.

A cache is a memory location that is used to store data temporarily. If you have, or have tried to, access confidential information or a secure service, requiring passwords, clear the cache after each use.

Clear private data

Select  and **Applications > Web > Clear private data.**

Clearing private data clears your cache, cookies, and browsing history.

Add a bookmark

If you visit the same websites all the time, add them to your Applications view, so you can easily access them.


Select .

While browsing, select  > **Add to apps.**


Tip: While browsing, to quickly go to a website you visit often, select the web address bar and a website from your most visited websites.



RSS feeds


Subscribe to a web feed

 You don't have to visit your favourite websites regularly to keep up with what's new on them. You can subscribe to web feeds and get links to latest content automatically. You can read your feeds in Feeds or in the Events view.

Select .

Web feeds on web pages are usually indicated with . They are used to share, for example, the latest news headlines or blog entries.

- 1 Select , and go to a blog or web page that contains a web feed.
- 2 Select  > **Subscribe to feed.**
- 3 To show the feed in the Events view, activate **Show feed on home screen.**

Tip: If you know the address of the feed, you can add the feed in Feeds. Select , and enter the address.

Update a feed

Select and hold the feed, and select **Update.**


Update all feeds

Select .

Set feeds to automatically update

Select  and **Applications > Feeds > Update feeds > Always automatically.**

Define how often feeds are updated

Select  and **Applications > Feeds > Auto-update interval**.

Contacts and social networking friends

Contacts

About Contacts

Select .


You can save and organise your friends' phone numbers, addresses, and other contact information.

Save phone numbers and mail addresses

You can save your friends' phone numbers, mail addresses, and other information to your contacts list.



Select .

Add a contact to the contacts list

- 1 Select .
- 2 Select a field, and fill in the details.

Tip: Create a contact card for yourself, so you can easily send your contact information to others.



Edit contact information

- 1 Select a contact.
- 2 Select  > **Edit**.
- 3 Select a field, and edit the details.
- 4 To view more fields, select .


Save a number from a received call or message

Have you received a call or a message from a person whose phone number is not yet saved in the contacts list? You can easily save the number in a contact list entry.

Save a number from a received call

- 1 Select .
- 2 Select a phone number and .
- 3 To create a new contacts list entry, select **Add new**. To add the number to an existing entry, select **Merge**.

Save a number from a received message

- 1 Select .
- 2 Select and hold a conversation, and select **Open contact card**.
- 3 Select **Save**.


- 4 Select **Edit**, and fill in the contact details. To add the number to an existing entry, select **Merge**.

Contact your most important people quickly

You can set your most important contacts as favourites. Your favourites are at the top of the contacts list, so you can contact them quickly.

Select .

Set a contact as a favourite

Select the contact and . The contact is moved to the top of your contacts list.


Remove a contact from favourites

Select the contact and . The contact remains in your standard contacts list.

Add a picture for a contact

Want to see quickly who is calling you? Add a picture from Gallery for a specific contact.

Select .

- 1 Select the contact and .

- 2 Select the picture.

To crop the picture, drag the slider at the bottom right corner of the frame. Drag the frame to reposition.

- 3 Select **Done**.

If you have linked contacts from social networking services to your contacts list, the picture used in the service is used automatically.

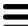

Change the picture for a contact

- 1 Select the contact and the current picture.
- 2 Select a new picture from Gallery.

Set a ringtone for a contact

Want to be able to hear that a particular person is calling you? You can set a ringtone specifically for that person.

Select .

- 1 Select a contact.
- 2 Select  > **Edit** >  > **Ringtone:**, and the ringtone to use for the contact.

Copy contacts from the SIM card to your phone

If you have contacts stored on your SIM card, you can copy them to your phone. You can add more details to contacts that are stored on your phone, such as alternative phone numbers, addresses, or a picture.

Select .



Select  > **Import contacts** > **SIM card**.

Tip: After copying your SIM contacts to your phone, or after importing contacts, any duplicate contacts are automatically merged into one.

Create a contact group

When you have created contact groups, you can send a message to several people at the same time. For example, you can assign the members of your family to one group.

Select .

- 1 Select  > **Add group**.
- 2 Enter a name for the group.
- 3 Select .
- 4 Select the contacts you want to add to the group, and select **Done**.
- 5 Select **Save**.

Send a message to a group of people

Would you like to send a message to all your family members quickly? If you have assigned them to a group, you can send a message to all of them at the same time.

Select .

- 1 Select the group.
- 2 Select **Message** or **Mail**.

Social networking friends

About online friends

You can bring all the status updates posted by your friends to your social networking services to a single view. Feeds from your social networking applications are shown in the Events view. You can also comment on your friends' status updates. If you link your online friends' profiles to their entries in your contacts list, their status updates are displayed on their contact cards in your contacts list.

Using social networking services requires network support.

For information about data transmission charges, contact your service provider.

The social networking services are third-party services and not provided by Nokia. Check the privacy settings of the social networking service you are using as you may share information with a large group of people. The terms of use of the social networking service apply to sharing information on that service. Familiarise yourself with the terms of use and the privacy practices of that service.

Bring your online friends status updates to one view

Sign in to social networking services, so you can see your online friends' status updates in the Events view.

Select .


- 1 Select **Add account** and a service.
- 2 Sign into the social networking service that you use.

Show your online friends' status updates in the contact cards

When you add an account for a social networking service, you can allow the automatic linking of your online friends' profiles from the services to the friends' entries in your contacts list. After linking, you can set your most important contacts as favourites, and you'll see their latest status update in Contacts. You can also see the contact details and latest status updates in the individual contact cards.


Select .

Import your friends' profiles

- 1 Select  > **Import contacts** > **Online service**.
- 2 Select a service, and create an account, if necessary. Your friends' profiles are linked automatically to their entries in your contacts list.

Contact details are copied to the respective entries in your contact list when possible. Existing details are not deleted. Any duplicate contacts are automatically merged into one.

Merge your friends' profiles manually

- 1 Select the contact and  > **Merge**.
- 2 Select one or more other profiles to link to the contact.

Tip: If you set your most important contacts as favourites, you can see their latest status update in Contacts.

View others' availability information

With availability indicators, you can see when your friends are online. You can see their location and if they are available to chat or answer an internet call, and they can see your availability information.

Sign in to the instant messaging or internet call services that you use, and select .

Availability information is displayed on the contact picture if supported by the online service.

Calls

Ways to make calls


To make a call, you can:

- Enter a phone number
- Search your contacts list
- Select from your last dialled numbers



Call a phone number

Select .

- 1 Select .
- 2 Enter the phone number.

To delete a number, select .

To enter the + character, used for international calls, select * twice. The + character as a replacement for the international access code may not work in all regions. In this case, enter the international access code directly.

- 3 To make the call, select .
- 4 To end the call, select .

Tip: In all apps, and even on the lock screen, you can easily make a call. Hold your phone upright, and drag your finger from below the bottom of the screen onto the screen. Hold your finger in place, until the quick launch bar is displayed.

Call a contact

Select .

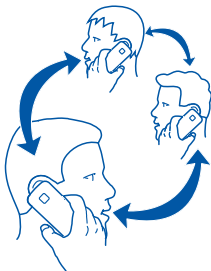
- 1 To search for a contact, enter the first letters or characters of the contact's first or second name in the search field.
- 2 Select the contact and the number.



Send a message to the contact

Select the contact and  next to the phone number.


Make a conference call

Your phone supports conference calls between a maximum of six participants, including yourself. Conference call is a network service.




- 1 Make a call to the first participant.
- 2 To make a call to another participant, select  > **New call to contact** or **Open Phone**. The first call is put on hold.
- 3 When the new call is answered, to start the conference call, select  **Conference call**.

Add a new participant to a conference call

Make a call to another participant, and to add the new call to the conference call, select  **Add**.

Have a private conversation with a conference call participant

Select .

Next to the participant name or number, select . The conference call is put on hold on your phone. The other participants continue the conference call.

To return to the conference call, select .

Drop a participant from a conference call

Select , and next to the participant name or number, select .

End an active conference call

Select .

Answer or decline calls


When someone is calling, you can:

- Answer the call
- Decline the call

- Decline the call with a text message
- Silence the call

You can set your phone to divert all calls to your voice mailbox or to another phone number.

Answer a call



When a call arrives, select .


When someone is calling you while your phone is locked, to access the incoming call view, swipe from the outside of the screen onto the screen. You can then answer the call.

Reject a call

When a call arrives, select .

Reply to a call with a text message

- 1 When a call arrives, select  > , and edit the message, informing that you cannot answer the call.
- 2 To send the message, select **Send**.

Tip: You can automatically divert rejected calls to your voice mailbox or another phone number (network service). Select  and **Device > Call > Call divert**.

Turn to silence

If your phone rings in a situation where you do not want to be disturbed, you can silence the ringing tone.

When your phone rings, turn your phone face down.




Divert calls to your voice mailbox or another phone number

If you cannot answer your calls, you can divert incoming calls to your voice mailbox or another phone number. Remember to set up your voice mailbox before diverting your calls there.

Select  and **Device > Call > Call divert**.

Call divert is a network service. For details, contact your service provider.

Divert all voice calls to your voice mailbox

- 1 Activate **All voice calls**.
- 2 Select  and your voice mailbox.

Divert all voice calls to another phone number

- 1 Activate **All voice calls**, and select **Phone number**.
- 2 Enter the number, or select  to use a number saved in your contacts list.


Several diverting options, such as **If busy** and **If not answered** can be active at the same time.

Call barring and call diverting cannot be active at the same time.

Call your voice mailbox



You can divert your incoming calls to your voice mailbox. Callers can also leave you a message if you do not answer. Voice mailbox is a network service.

Select .




Select , and select and hold **1**.

If the voice mailbox number is not saved, your phone asks for it. Enter the number (obtained from your network service provider), and select **Save**.

Change the phone number of your voice mailbox

- 1 Select  and  >  > **Edit voice mail account**.
- 2 Enter the number, and select **Save**.

Add another voice mailbox

- 1 Select  and  >  > **Edit voice mail account** > **+**.
- 2 Enter the number, and select **Save**.

During a call

During a call, you can:

- Activate the loudspeaker
- Add callers, to make a conference call
- Answer a waiting call

Activate the loudspeaker during a call

To allow others in the room to join in with a call, activate the built-in loudspeaker.


Select  Loudspeaker.

Deactivate the loudspeaker

Select  Loudspeaker.

Answer a waiting call

You can answer a call when you have another call in progress. Call waiting is a network service.

Select . The first call is put on hold.

Activate, deactivate, or check the status of the service

Select  and  > Call waiting.

Swap between an active call and a call on hold

Select the call.


Connect the call on hold to the active call to start a conference call

Select  Conference call.

End an active call

Select .

End both calls

Select  > End all calls.

Recent calls

Your call history is stored on your phone.


Missed and received calls are logged only if supported by the network, and the phone is switched on and within the network service area.

View your missed calls

In the Events view, you can see when you have missed calls. To view the phone numbers or contacts, select the displayed notification. The caller's name is displayed if stored in the contacts list.

Missed and received calls are logged only if supported by the network, and the phone is switched on and within the network service area.

Call back a contact or number

Select the contact or number and .

View the missed calls list later

Select  and  >  > Missed calls.


View your received calls

Select .

Received calls are logged only if supported by the network, and the phone is switched on and within the network service area.

Select  >  > Received calls.

Call back the contact or number


Select the contact or number and .

Call the last dialled number

Trying to call someone, but they are not answering? It is easy to call them again. In the call history view, you can see information about the calls you have made and received.

Select .

Select  > , and from the pop-up menu, select **Dialled calls**.

To call the last dialled number, select the contact or number from the list and .

Tip: If using the headset, to call the last dialled number, press the button on the headset twice.

About internet calls

You can make and receive calls over the internet. Internet call services may support calls between computers, between mobile phones, and between a VoIP device and a traditional telephone. The internet call service is a network service.

Some internet call service providers allow free internet calls. For availability and connectivity costs, contact your internet call service provider.

To make or receive an internet call, you must be in the service area of a Wi-Fi network or have a packet data (GPRS) connection in a 3G network, and be signed in to an internet call service.

Install an internet call service

Select .

- 1 Select **Add account** and an internet call service provider.
- 2 Enter required details, such as your username and password.
- 3 To sign in to the service, select **Sign in**.

When an internet call service has been installed, the service is displayed in the contacts list and the Accounts application.

Tip: You can search for internet call services from Nokia's Ovi Store. For details, go to www.ovi.com.

Sign in to an internet call service

Select .

Select the internet call service, and activate the account.

Deactivate a service

Select the account, and deactivate it. When you deactivate an account, all content related to the account is hidden.



Set all services to offline

Set your availability status to **All offline**.

Make an internet call



When you are signed into an internet call service, you can make an internet call from the contacts list or enter a phone number manually.

Call a contact in the contacts list


- 1 Select  and .
- 2 Select a contact and an internet call service.

Make an internet call to a phone number

- 1 Select  and .

- 2 Enter the phone number.
- 3 Select , an internet call service, and .

Set your availability status

Want to receive instant messages or internet calls from your friends? Set your availability status to .

Open the status menu, and select **Availability**.

Set your availability status for all your accounts

Select **All online** or **All offline**.

Set your availability for an individual account

Select the account and the desired availability status.

When you're signed in to several instant messaging or internet call services at the same time, you can post a single status message to all the services.

Post a status message

- 1 Open the status menu, and select **Availability**.
- 2 Select the text input field, and write your status message.
- 3 Select **Update**.

Share your location in your status message

- 1 Open the status menu, and select **Availability** > **Add location**.
- 2 Select **Street**, **District**, or **City**.
- 3 Select the Add location check box.

Location sharing is available only if it is supported by the service.

Before sharing your location, always carefully consider with whom you are sharing. Check the privacy settings of the service you are using, as you might share your location with a large group of people.

The applicable terms of use of the service may apply to sharing your location to the service. Familiarise yourself with the terms of use and the privacy practices of the service, and use appropriate consideration before disclosing your location data to others or viewing the location of others.

Messaging and social networks

Set up all your accounts in one go

Set up and manage all your instant messaging (IM), internet call, mail, and social networking accounts in one view.

Select .

- 1 Select **Add account**.
- 2 Select an account, and follow the displayed instructions.
- 3 After setting up the account, to add another account, select **Add more accounts**.


When you set up an account, you need to sign in with your credentials. Your phone remembers your credentials in future.

Tip: To protect your accounts against unauthorised use, lock your phone when not in use.

Deactivate a service

Select the account, and deactivate it. When you deactivate an account, all content related to the account is hidden.

Remove a service

Select the account and  > **Delete**.

Messages

About Messages

Select .

You can send and receive different kinds of messages:

- Text messages
- Multimedia messages that contain your pictures or videos
- Instant messages (network service)

Messages requires network support.

Tip: To access messages quickly, hold your phone upright, and drag your finger from below the bottom of the screen onto the screen. Hold your finger in place, until the quick launch bar is displayed.

You can send text messages that are longer than the character limit for a single message. Longer messages are sent as two or more messages. Your service provider may charge accordingly.




Characters with accents, other marks, or some language options, take more space, limiting the number of characters that can be sent in a single message.

Using services or downloading content may cause transfer of large amounts of data, which may result in data traffic costs.

Send a message

With text and multimedia messages, you can quickly contact your friends and family. In a multimedia message, you can attach your videos, pictures, and sound clips that you want to share.

Select .

- 1 Select .
- 2 To select recipients from the contacts list, select the To field and . To enter the recipient's name or phone number manually, select the To field, and enter the name or number.
- 3 To add an attachment, select .
- 4 To send the message, select **Send**.

Sending a message with an attachment may be more expensive than sending a normal text message. For more information, contact your service provider.

If the item you insert in a multimedia message is too large for the network, the device may automatically reduce the size.

Only compatible devices can receive and display multimedia messages. Messages may look different in different devices.

Read a received message

In the Events view, select the notification.

To view your messages later, select .

Reply to the received message


Select a conversation, write your reply in the text input field at the bottom of the display, and select **Send**.

Forward the message

Select a conversation, select and hold the message, and select **Forward**.

Forward a multimedia message

Select a conversation and the multimedia message.

Select  > **Forward**.


Save a picture or other multimedia item

Select and hold the item, and select **Save as**. You can view the item in the corresponding application. For example, to view saved pictures, open Gallery.

Tip: To view text messages and instant messages separately, select .


Create an instant messaging account

To chat with your contacts, you need an instant messaging account in your phone.

Select  and **Add account**, and follow the displayed instructions.

Send an instant message

Select .

- 1 Select  and a contact.
- 2 Write your message, and select **Send**.

Tip: You can sign in to and chat in several services at the same time. Switch between different chat services in the Open applications view.

Change the phone language

Select  and **Time and language** > **Language**.

Mail

About Mail

Select .

You can start using your existing mail address with your phone, and read, respond to, and organise your mail on the go.

Sending or receiving mail on your phone may be chargeable. For information on possible costs, contact your service provider.

Mail is a network service, and may not be available in all regions.

Add a mailbox

You can add several mailboxes to your phone.



Select .

Select an account, and follow the instructions.

Add a mailbox later

Select  and **Add account**. Follow the displayed instructions.

Delete a mailbox

- 1 Select .
- 2 Select the mailbox and  > **Delete**.


Read a received mail

In the Events view, select the mail notification.


To read your mail later, select .

Tip: To zoom in or out, place two fingers on the screen, and slide them together or apart.

Reply to the mail

Select and hold the mail, and select  or **Reply to all**.

Forward the mail

Select .




Delete the mail

Select .

Send a mail

You can use your phone to write and send mail, and attach files to your mail.

Select .

- 1 Select .
- 2 Enter the mail address. To add a recipient from your contacts list, select .
- 3 To add an attachment to the mail, select  > **Attachments:**.
- 4 Select **Send**.

Mail for Exchange**About Mail for Exchange**

Would you like to have your work mail, contacts, and calendar at hand, whether you are sitting by your computer or on the go with your phone? You can synchronise the important content between your phone and a Microsoft Exchange server.

Select  and **Add account** > **Mail for Exchange**.

Mail for Exchange can be set up only if your company has a Microsoft Exchange server. In addition, your company IT administrator must have activated Microsoft Exchange ActiveSync for your account.

Use of the Mail for Exchange is limited to over-the-air synchronisation of PIM information between the Nokia device and the authorised Microsoft Exchange server.

Before starting to set up Mail for Exchange, make sure you have the following:

- A corporate mail address
- Your Exchange server name (contact your company IT department)
- Your network domain name (contact your company IT department)
- Your office network password



Depending on the Exchange server configuration, you may need to enter additional information. If you do not know the correct information, contact your company IT department.

With Mail for Exchange, the use of the phone lock code may be mandatory.

Synchronisation takes place automatically in intervals defined when setting up the Mail for Exchange account. Only content defined when setting up the account is synchronised. To synchronise additional content, modify the Mail for Exchange settings.


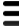
Respond to a meeting request

You can respond to meeting requests using Mail for Exchange. When you accept a meeting request, it appears in your calendar.

- 1 In the Events view, select the mail notification, or select  and the mail.
- 2 Select , and **Accept**, **Tentative**, or **Decline**.

Remove duplicate calendar entries

If you have previously used Nokia Ovi Suite to synchronise your calendar, you may have duplicate calendar entries in your phone.

- 1 In the Mail for Exchange settings, deactivate calendar synchronisation.
If you do not deactivate calendar synchronisation before removing your calendar entries from your phone, the entries are also removed from the server during the next synchronisation, and they cannot be synchronised back to your phone.
- 2 Select  and  > **Manage calendars**.
- 3 Select and hold the desired calendar, and select **Delete**.
- 4 In the Mail for Exchange settings, activate calendar synchronisation. The calendar is synchronised from the server back to your phone during the next synchronisation.

- 5 If you still have duplicates in your phone calendar, remove them from the server.

Music and videos

Music player

About the music player

Select .


You can use your phone's music player to listen to music and podcasts while on the move.


Tip: Get more music from Ovi Music. To learn more about Ovi, go to www.ovi.com.

Play music and podcasts

Select .

Select a song, podcast, or album.



Tip: To listen to songs in a random order, select .

Tip: You can make a playlist of your favourite songs for easy listening. To add a song to the playlist, select .

Pause or resume playback

To pause playback, select ; to resume, select .

Play the next or previous song

Select  or , or flick the album art left or right.

Browse music in Ovi Music

Select **Ovi Music**.

Tip: When listening to music, you can return to the home screen, leaving the music playing in the background.

Explore recommendations from Ovi Music

Want to explore new music but don't know where to start? Let your phone suggest albums matching your taste, and get inspired.

Select .

When browsing artists, albums, or songs, select an album suggested under You might also like.

Deactivate Ovi Music recommendations

Select  and **Applications > Music**, and deactivate **Show recommendations**.

Copy your music from your PC

Do you have music on your PC that you want to listen on your phone? Use a compatible USB data cable to copy your music between your phone and a computer.



- 1 Use a compatible USB data cable to connect your phone to your computer.
- 2 Select **Use as mass storage**.
- 3 On your computer, select a song, and copy it to the Music folder on your phone.

Tip: Get more music from Ovi Music. To learn more about Ovi, go to www.ovi.com.

Videos

About Videos

Select .

You can browse, download, and watch videos on your phone when out and about.

Tip: Get new videos from Ovi Store. To learn more about Ovi Store, go to www.ovi.com.

Using services or downloading content may cause transfer of large amounts of data, which may result in data traffic costs.

Play a video

To browse your video collection, select . To browse the videos you have recorded, select .

- 1 Select a video.
- 2 To use the video player controls, tap the screen.

Copy your videos from your PC


Do you have videos that you want to watch on your phone? You can copy your videos between your computer and your phone.

- 1 Use a compatible USB data cable to connect your phone to your computer.
- 2 Select **Sync and connect**.
- 3 On your computer, open the file manager, and copy your videos to your phone.

On your phone, videos that are in a supported format are displayed in Videos.

Stream or download videos from the internet

You can download or stream videos over the air from compatible internet video services. When you stream a video, you can start to watch it soon after starting; you do not need to wait for the whole video to download first.

Select , and search for a video.

Play a video

Select a video. To access the video player controls, tap the screen.

Some videos can be streamed over the air, but others must be first downloaded to your phone. Downloads continue in the background if you close the application. The downloaded videos are saved in Videos.

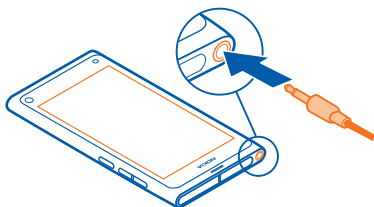
Tip: Get new videos from Nokia's Ovi Store. For more information, go to www.ovi.com.


Using services or downloading content may cause transfer of large amounts of data, which may result in data traffic costs.

Enjoy surround sound through your headphones

Want to enjoy the realistic and intense sounds of a movie or a concert experience? With Dolby™ Digital Plus 5.1 multichannel audio, you can enjoy immersive surround sound over any pair of headphones.

- 1 Connect headphones to your phone.



- 2 To activate or deactivate surround sound, select  and **Applications > Videos > Dolby Headphone**.

Dolby™ Headphone can use any native 5.1 content, but can also convert 2-channel content into surround sound.

Camera and Gallery

Take pictures

About the camera

Select .

Why carry a separate camera if your phone has all you need for capturing memories? With your phone camera, you can easily take pictures or record videos.


The back camera on your phone is an 8-megapixel autofocus camera. The wide-angle Carl Zeiss™ lens lets you capture more, by broadening the angle of view, for example, when taking a group picture in a confined space.

You can later use your phone to view or edit the pictures and view the videos, share them on the internet, or send them to compatible devices.

Tip: To access the camera quickly, hold your phone upright, and drag your finger from below the bottom of the screen onto the screen. Hold your finger in place, until the quick launch bar is displayed.

Take a picture

Select .

Select and hold . The focus is locked when a blue rectangle is displayed. To take the picture, lift your finger. Do not move the phone before the picture is saved and the final picture displayed.

Zoom in or out

Use the volume keys.


Focus on a specific object or area


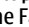
Tap the object or area on the screen.

Touch focus is always activated. However, it is not available in landscape or sports scene modes.

When taking a picture, you can recompose it without losing the focus point.

Recompose a picture while taking it

- 1 To lock the focus, select and hold . The focus is locked when a blue rectangle is displayed.
- 2 Recompose the picture.
- 3 To take the picture, lift your finger.

Tip: To mark a picture as a favourite right after taking it, select , tap the screen to display the toolbar, and select . Later, you can find the picture in the Favourites folder in Gallery.

The face tracking feature optimises focus, white balance, and exposure, and draws rectangles around faces, even when they are moving. Face tracking is activated by default. It is not available in landscape, sports, night, and macro scene modes.

Deactivate face tracking

Tap the settings area, and deactivate **Face detection**.

If you tap the screen to move the focus, face tracking is deactivated. To reactivate it, tap the middle of the screen. Face detection is also reactivated when you return to the camera from another view.

Pictures and videos taken with your phone are saved in Gallery. To open Gallery, select





Picture tips

Select .







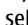
Here are some tips to help you use the camera.

- Use both hands to keep the camera steady.
- To zoom in, use the volume keys or the zoom slider on the screen.

When you zoom in, the image quality may decrease.

- To interrupt taking a picture after selecting , slide your finger away from , then lift it.
- The camera activates battery saving mode after about a minute of inactivity. To activate the camera again, tap the screen.

Keep a safe distance when using the flash. Do not use the flash on people or animals at close range. Do not cover the flash while taking a picture.

- To switch between taking pictures and recording videos, select  or .
- To modify camera settings, such as flash, scene modes, aspect ratio, and resolution, tap the settings area     , and select the setting.
- By default, pictures use the 16:9 aspect ratio and have a 7 Mpix resolution. This aspect ratio is best suited to view the pictures on a TV, as there are no black edges. To take 8 Mpix pictures, change the aspect ratio to 4:3. Tap the settings area, and select the appropriate settings.

- To share a picture or video with NFC directly from the camera, the picture or video needs to be displayed on screen. By default, the captured content is not displayed after taking a picture or recording a video. To display it, tap the settings area, and select the appropriate setting for Show captured content.
- In all apps, and even on the lock screen, you can easily access the camera. Hold your phone upright, and drag your finger from below the bottom of the screen onto the screen. Hold your finger in place, until the quick launch bar is displayed.

Take a close-up picture

It can be tricky to get small objects, such as insects or flowers, in focus. You need to move the camera closer to the object. To take sharp and precise pictures of even the tiniest details, use close-up mode.

Select .

Activate close-up mode

Tap the settings area, and select **Macro**.

Take a picture in the dark

Want to take better pictures even in dim light? Activate night mode.

Select .

Activate night mode

Tap the settings area, and select **Night**.

Tip: You can also record videos in dim light. To activate night video mode, switch to video mode, tap the settings area, and select **Video at night**.

Take a picture of a moving object

Are you at a sports event and want to capture the action with your phone? Use the sports mode to take a sharper picture of moving people.

Select .

Activate sports mode

Tap the settings area, and select **Sports**.

Save location information to your pictures and videos

If you sometimes want to find all your pictures or videos that match a certain location, or sometimes struggle to remember where you were when you took a particular picture

or recorded a video, you can set your phone to automatically record the location and add geotags to your pictures and videos.

GPS is used to record the coordinates of your location. Geotagging converts the coordinates into location tags with information of, for example, the country and the city. This is a network service and may result in data costs.

The location information may not be available in all regions.

Select .

You need to activate GPS before you can activate geotagging.

Activate GPS and geotagging

- 1 Tap the settings area, and select **Use GPS**.

It may take several minutes to obtain the coordinates of your location. The availability and quality of GPS signals may be affected by your location, buildings, natural obstacles, and weather conditions. This feature requires network service.

- 2 Select **Use geotags**.

Tip: You can also add or edit geotags later, in Gallery.




Location information can be attached to an image or a video clip, if location information is available. Location information may become visible to third parties, if images or video clips are shared.

Record videos

Record a video

Besides taking pictures with your phone, you can also capture your special moments as videos.

Select .

- 1 To switch from image mode to video mode, if necessary, select .
- 2 To start recording, select . A red record icon is displayed.
- 3 To stop recording, select . The video is automatically saved in Gallery.





Send and share pictures and videos

Send a picture or video





You can send pictures and videos in a multimedia or mail message, or using Bluetooth or NFC.

Select .




Send in a multimedia message

- 1 Take a picture or record a video.
- 2 Select  >  and  **Multimedia message**.
- 3 To select a recipient from your contacts list, select **To** > . To enter the recipient's name or phone number manually, select the **To** field, and enter the name or phone number.
- 4 Select **Send**.

Send in a mail

- 1 Take a picture or record a video.
- 2 Select  >  and  **Mail**.
- 3 To select a recipient from your contacts list, select **To** > . To enter the recipient's address manually, select the **To:** field, and enter the address.
- 4 Select **Send**.

Send using Bluetooth

- 1 Take a picture or record a video.
- 2 Select  >  and  **Bluetooth**.
- 3 Select the device to connect to.
- 4 If the other device requires a passcode, enter the passcode.

Send using NFC

- 1 Take a picture or record a video.





- 2 Select  >  and **NFC**.
- 3 Touch the other phone with the NFC area of your phone.

Share a picture or video directly from the camera

After taking a picture or recording a video, you can upload your picture or video to a sharing service.

Select .

- 1 Take a picture or record a video.

- 2 Select .
- 3 If necessary, tap the screen to display the toolbar, and select  > **New account**.
- 4 Sign into a sharing service, and follow the displayed instructions.

Tip: You can also share pictures or videos from Gallery, or with another Nokia phone that supports NFC. To share with NFC, after taking a picture or recording a video, touch the NFC area of the other phone with the NFC area of your phone.

Not all sharing services support all file formats or videos recorded in high quality.

Gallery

About Gallery

Select .

The pictures you have taken or videos you have recorded are collected in Gallery, where you can view and edit them.

You can also view the pictures and videos on a compatible TV.

To manage your media files more effectively, add tags to the files, or mark them as favourites.

View a picture or video

Select .

Browse pictures and videos

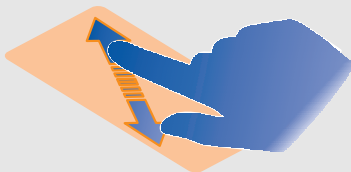
Scroll up or down.

View a picture in full screen mode

Select the picture. To display the toolbar, tap the picture.


Zoom in or out

Place two fingers on the screen, and slide your fingers apart or together.



Tip: To quickly zoom in or out, tap the screen twice.

View pictures as a slide show

Select a picture, tap the screen to display the toolbar, and select  > **Slide show**. The slide show starts from the selected picture.

Play a video

Select a video.

Pictures and videos can also be sent to you from a compatible device. You can view a received picture directly in Gallery and a received video in Videos.


Organise your pictures and videos

To organise your pictures and videos, add tags to them, or mark them as favourites. With tags and favourites, it's easy to categorise and find the pictures and videos in Gallery.

Select .


Tags are keywords that you can create and attach to your pictures and videos. Geotags are tags that include location information, such as country and city.

Add a tag


- 1 Select a picture or video, tap the screen to display the toolbar, and select  > **Edit tags**.
- 2 Select a tag. To create a new tag, select **Create new tag**.

You can also add the same tags to several pictures or videos at a time.

Add tags to several pictures or videos

- 1 In the Gallery main view, select  > **Edit tags**.
- 2 Select the pictures or videos and **Edit tags**.
- 3 Select the tags, or create new ones, and select **Done**.

Add a geotag

- 1 Select a picture or video, tap the screen to display the toolbar, and select  > **Edit tags**.
- 2 Select a geotag. To create a new geotag, select **Edit geotags**.

View the pictures and videos that match a tag

In the Gallery main view, select **Collection** > **Tags** and the tag.

You can also view pictures and videos that match several tags. Selecting several tags displays the pictures and videos that are marked with all of the selected tags.

Mark as a favourite

Select a picture or video, tap the screen to display the toolbar, and select ☆.

View the pictures and videos that are marked as favourites

In the Gallery main view, select **Collection** > **Favourites**.

View a picture or video on a TV

You can view pictures and videos on a compatible TV, making it easier for you to show them to your family and friends.

You need to use a Nokia Video Connectivity Cable (available separately), and may need to modify the TV-out settings.

Modify the TV-out settings

Select ⚙ and **Accessories** > **TV-out**.

Do not connect products that create an output signal as this may cause damage to the phone. Do not connect any voltage source to the headset connector. If you connect an external device or headset, other than those approved by Nokia for use with this phone, to the headset connector, pay special attention to volume levels.

- 1 Connect a Nokia Video Connectivity Cable to the video input of a compatible TV. The colour of the plugs must match the colour of the sockets.
- 2 Connect the other end of the Nokia Video Connectivity Cable to the headset connector of your phone.
- 3 Select a picture or video.

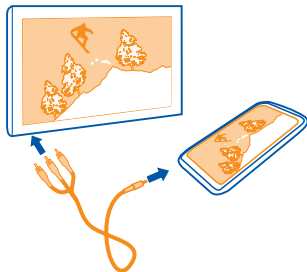


Image editor


Edit a picture you have taken

Do you need to crop your pictures or remove red eyes? You can easily do simple edits to the pictures you have taken with your phone.

All edits are nondestructive, that is, you can undo them or revert to the original picture at any time.

Select .

Insert an effect


Select a picture, tap the screen to display the toolbar, and select  > **Edit** and the desired option. The changes you make are saved automatically.

You can undo or redo changes even after closing Gallery or restarting the phone.

Undo or redo an effect

Select  or .

Reset to original

Select the picture, tap the screen to display the toolbar, and select  > **Edit** > **Reset to original**.

To later view your edited pictures, select .

Maps and navigation

GPS

About positioning methods

Your phone displays your location using GPS, A-GPS, Wi-Fi, or cellular positioning.

The Global Positioning System (GPS) is a satellite-based navigation system used for calculating your location. Assisted GPS (A-GPS) is a network service that sends you GPS data, improving the speed of the positioning. In addition, other enhancements to GPS may be used to improve and speed up the positioning. These may require transferring small amounts of data over the cellular network.

Wi-Fi positioning improves position accuracy when GPS signals are not available, especially when you are indoors or between tall buildings.

With cellular positioning, the position is determined through the cellular network antenna your phone is currently connected to.

To save on data costs, you can deactivate A-GPS in your phone positioning settings, but calculating your location may take much longer.

You can deactivate Wi-Fi in your phone internet connection settings

Depending on the available positioning methods, the accuracy of positioning may vary from a few metres to several kilometres.

Deactivate assisted GPS (A-GPS)


Assisted GPS (A-GPS) helps your phone determine your current location more quickly. A-GPS is a network service. To save on data costs, especially when abroad, you can deactivate the service.

Select  and **Device > GPS and positioning**, and deactivate **Mobile data connection**.

The Assisted GPS (A-GPS) network service retrieves location information using the cellular network, and assists GPS in calculating your current location.

Your phone is preconfigured to use the Nokia A-GPS service, if no service provider-specific A-GPS settings are available. The assistance data is retrieved from the Nokia A-GPS service server only when needed.


You must have a mobile data internet access point defined in the phone to retrieve assistance data.

 **Note:** The use of assisted positioning methods may involve exchanging your location data, wireless network identifiers along with your unique phone or network

service provider identifiers with a location server. Nokia processes this information anonymously. Depending on your positioning settings and your use of location services, your phone may connect to other service providers' servers, which are not controlled or operated by Nokia. Check the privacy policies of such service providers to understand how they process your location data.

Tips on creating a GPS connection

Check the satellite signal status

 in the status area indicates an active GPS connection.

If a satellite signal cannot be found, consider the following:

- If you are indoors, go outdoors to receive a better signal.
- If you are outdoors, move to a more open space.
- If the weather conditions are bad, the signal strength may be affected.
- Some vehicles have tinted (athermic) windows, which may block the satellite signals.
- Make sure you do not cover the antenna with your hand.



- Use an external GPS receiver.

Establishing a GPS connection may take from a couple of seconds to several minutes. Establishing a GPS connection in a vehicle may take longer.

The GPS receiver uses the phone battery. Using GPS may drain the battery more quickly.

Maps

About Maps

Select .

Maps shows you what is nearby, and guides you where you want to go.

- Find cities, streets, and places of interest.
- Plan your route.
- Find your way with turn-by-turn directions.

Some services may not be available in all countries, and may be provided only in selected languages. The services may be network dependent. For more information, contact your network service provider.

Using services or downloading content may cause transfer of large amounts of data, which may result in data traffic costs.

Contents of digital maps may sometimes be inaccurate and incomplete. Never rely solely on the content or the service for essential communications, such as in emergencies.

Some content is generated by third parties and not Nokia. The content may be inaccurate and is subject to availability.

View your location and the map

See your current location on the map, and browse maps of different cities and countries.

Select .



indicates your current location, if available. If your current

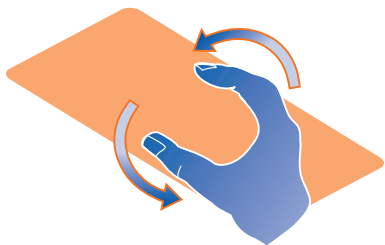


location is not available,

indicates your last known location.

Browse the map

- 1 Drag the map with your finger. By default, the map is oriented north.
- 2 You can also use two fingers to rotate the map.



To enable two-finger rotation, select ●●● > **Settings**, and activate **Two-finger map rotation**.

View your current location



Select

on the map.

If you search for or browse to a location, and view details about the location, the information for the location you are currently viewing is displayed. To return to viewing your current location, or to view information for your current location, select



Zoom in or out

To zoom in, double-tap the map, or place two fingers on the map and slide them apart. To zoom out, slide your fingers together.

Tip: You can also use the zoom bar. To display the bar in the different views, select ●●● > **Settings**, and activate **Zoom bar**.

If you browse to an area not covered by the street maps that are stored on your phone, and you have an active data connection, new street maps are automatically downloaded.

New street maps are also downloaded if you upgrade to the latest Maps application version.

Map coverage varies by country and region.

Change the look of the map

View the map in different modes, to easily identify where you are.

Select .



Select and from the following:

Map — In the standard map view, details such as location names or motorway numbers are easy to read.

Satellite — For a detailed realistic view, use satellite images.

Terrain — View at a glance the ground type, for example, when you are travelling off-road.

Public transport lines — View selected public transport services, such as metro, bus, or tram routes.

3D Mode — For a more realistic view, change the perspective of the map.

Nightmode — Dim the colours of the map. When travelling at night, the map is easier to read in this mode.

3D Landmarks — Display prominent buildings and attractions on the map.

Traffic — View the amount of traffic on the roads, to avoid the red congested areas.

The available options and features may vary by region. The unavailable options are dimmed.

Get guidance

You can get guidance for walking, driving, or travelling by public transport.

Select  and .

Voice guidance, if available for your language, helps you find your way to a destination, leaving you free to enjoy the journey.

Get voice guidance

- 1 Use your current location as the starting point, or enter a location in the field, and select from the proposed matches.
- 2 Enter the destination in the appropriate field.
- 3 The selected destination is displayed on the map. Select the destination marker and



or



, and select **Get directions**.

- 4 To start voice-guided navigation, select **Navigate**. To view written directions, select



You can get guidance on which bus, train, or underground lines to use, and how to get to the stations or stops.


Get guidance for public transport

- 1 On the map, select the destination marker and
A map of the route is displayed.



- 2 For detailed instructions, select



Tip: To navigate to a place you have found through nearby or category search, select the place marker and .


Download and update maps

Save street maps to your phone, so you can browse the maps without an internet connection and save on data costs when travelling.

Select .

To download and update maps on your phone, you need an active WLAN connection.

Download maps

- 1 Select  > **Manage maps** > **Add maps**.
- 2 Select the continent and country, and select **Download**.
To pause the download, select the download progress bar and **Pause**. To resume downloading, select **Resume**. To cancel the download completely, select **Exit**.

Update maps

- 1 Select  > **Manage maps** > **Check for updates**.
- 2 If new updates are available, the phone offers those to you. Select **Download**.

Use Maps offline

To save data costs, especially when travelling, you can also use Maps without an internet connection.

Select .

When you have downloaded the needed maps to your phone, you can use, for example, positioning, search, and navigation also in offline mode.

Select  > **Settings**, and deactivate **Online**.

Tip: To make sure that you can use Maps offline when abroad, download the needed maps to your phone before the trip.

Find a location

Maps helps you find specific locations, places of interest, and businesses.

Select  and .

Search for a location

- 1 Enter search words, such as a street address or place name in the Search field.
- 2 Select an item from the list of proposed matches.

The location is displayed on the map.

If no search results are found, make sure the spelling of your search words is correct.

View the list of proposed matches



Select

Search for nearby places



1 Select

The nearby public places are shown as place markers on the map.



2 To view a list of the nearby places, select

3 To view the details of a place, select the marker of the place.

Search for places by category

1 Select ●●● > **Categories** and a category.

2 To view the details of a place, select the place from the list.

3 To view the place on a bigger map, tap the map.

Tip: To view the details of a found place, you can also select its marker on the map.

Problems with your internet connection may affect results when searching online.

If you have maps of the searched area stored on your phone, to avoid data transfer costs, you can also get search results without an active internet connection, but the search results may be limited.

Save a favourite place

Save an address or a place of interest, so it can be quickly used later.

Select



Save a place

On the map, select a location marker and its information field.

On the information page, select



View and edit your favourite places

You can quickly access the places you have saved.

Select  and  > **Favourites**.

View a saved place on the map


In your favourites list, select the place, and tap the map.

It is also possible to check the contact information for a saved place, if available. For example, you can call a restaurant or view its website.

Contact a place

- 1 In your favourites list, select the place and **Contact**.
- 2 You can select the phone number, mail address, or web address.

Edit or delete a saved place

- 1 In your favourites list, select the place.
- 2 Select , edit the name or description, and select **Done**. To delete the place, select **Remove**.

Send a place to a friend

When you want to show your friends where a place is on the map, you can send the place to them.

Select .

To view the place on the map, your friends don't need to have a Nokia phone, but an active internet connection is required.

- 1 Select the location marker on the map. The information page is displayed.


- 2 Select .

A mail or text message containing a link to the location on the map is sent to your friend.

Walk to your destination

When you need directions to follow a route on foot, Maps guides you over squares, and through parks, pedestrian zones, and even shopping centres.

Select .

- 1 Select , and enter your destination.
- 2 On the map, select the destination location marker and **directions**.
- 3 To start voice-guided navigation, select **Navigate**.



> **Get**

View the whole route

- 1 Select .

- 2 To zoom into your current location, select .

Deactivate voice guidance

Select  > **Voice guidance**.

Change the guidance voice

 > **Select voice**.


Prevent the display switching off

 > **Backlight always on**.

Give feedback on Maps

Participate in improving the Maps application, and send your feedback.

Select .

- 1 Select  > **Feedback**.
- 2 Select how likely you are to recommend Maps to other people.
You can also give your reasons. The feedback is anonymous.
- 3 Select **Submit**.

To give feedback, you need to have an active internet connection.


After you have sent your feedback for the current version of Maps, the option is no longer available.

Drive

Drive to your destination

When you need clear turn-by-turn directions optimised for use while driving, Drive helps you get to your destination.


Select .

- 1 Select  > **Set destination** and the appropriate option.
- 2 Select your destination and **Drive to**.

You can start driving without a set destination. The map follows your location.


By default, the map rotates to your driving direction. The compass always points north.

Tip: To view the map in full screen mode, tap the map.

When you're not navigating to a set destination, to save battery life, GPS positioning is deactivated when you leave Drive running in the background. To activate GPS positioning also when Drive is running in the background to, for example, get warnings when your speed exceeds the current speed limit, select  > **Settings** > **GPS power saving**.

To save data costs, you can also use Drive offline.

Navigate offline

Select  > **Settings**, and clear the **Connection** check box.


Some features, such as search results, may be limited in the offline mode.

Obey all local laws. Always keep your hands free to operate the vehicle while driving. Your first consideration while driving should be road safety.

Get voice guidance

Voice guidance, if available for your language, helps you find your way to a destination, leaving you free to enjoy the journey.

Select .

- 1 Select  > **Settings** > **Navigation voice**.
- 2 Select a language, or to deactivate voice guidance, select **None**.

You can also download new navigation voices.

Download navigation voices


Select  > **Settings** > **Navigation voice** > **Download new** and a voice.


You can use other applications when navigating, and still hear the voice guidance.

View places on the map

Looking for a petrol station, parking place, or a place to eat? Set your phone to display them on the map.

Select .

- 1 Select  > **Settings** > **Places**.
- 2 Select the categories you want to see on the map.

Tip: To set your phone to display prominent buildings and attractions on the map, select  > **Settings** > **Landmarks**.

Change the look of the Drive view

Would you like to see a more realistic 3D map, or are you using Drive at night, when it's dark? With the different map modes, you can see the information you need clearly at all times.


Select .

Change the map type

Select  > **2D, 3D, or Sat.**

To see the map clearly also when it is dark, you can activate night mode.

Activate night mode

Select  > **Settings** > **Day / Night** > **Night**.

Productivity and time

Time management

Clock

About the clock

Select .

Set and manage alarms.

Set an alarm

Want to wake up to your favourite song in the morning? You can use your phone as an alarm clock.

Select .

- 1 Select **+**.
- 2 Set the alarm time, and enter a description.
- 3 To set the alarm to sound, for example, at the same time every day, select **More options > Repeat**.
- 4 To set the alarm tone, select **Alarm tone**.

Remove an alarm

In the Alarms view, select and hold the alarm, and from the pop-up menu, select **Delete**.

Tip: In the Alarms view, you can use the switch to temporarily deactivate an alarm.

Snooze an alarm

When an alarm sounds, you can snooze the alarm. This pauses the alarm for a defined length of time.

When the alarm sounds, select **Snooze**.

Set the length of the snooze time for an alarm

Select the alarm and **More options > Snooze time**, and set the length of time.

Tip: To mute the alarm without snoozing, turn your phone face down.




Set the time and date

Select  and **Time and language > Time and date**.

Update the time and date automatically

You can set your phone to update the time, date, and time zone automatically. Automatic update is a network service.

Select  and **Time and language > Time and date**, and activate **Automatic time update**.

Calendar

About the calendar

Select .


With your phone calendar, you can keep your schedules organised.

View your schedule for the week

You can browse your calendar events in different views. To see an overview of a particular week, use the week view.

Select .



Select .

Tip: To view a list of your upcoming events, select .

Add a task to your to-do list

Do you have important tasks to handle at work, library books to return, or maybe an event you want to attend? You can add tasks (to-do notes) to your calendar. If you have a particular deadline, set a reminder.

Select .

- 1 Select  > **Show to-dos**.
- 2 Select .
- 3 Fill in the fields.
- 4 Activate **Due date**.
- 5 To set a reminder, select **Reminder:** and the interval, and set the reminder time.

Mark a task as completed

Select and hold the to-do item, and from the pop-up menu, select **Mark as done**.

Add a calendar event

Select .

- 1 In a calendar view, select .
- 2 Fill in the fields.
- 3 To invite participants, select  > **Add contacts** >  and the contacts.
- 4 Select **Save**.

Set the default length of reminder time

Select  and **Applications** > **Calendar** > **Default reminder displayed**, and set the length of the reminder.

Add the location to a calendar entry


Do you have an appointment in a place you are not familiar with? If you add the location to the meeting entry, you can check the location from a map before setting off.

Select .


Add the location manually

Select **Location:**, and enter the address.

Select the location from the map

- 1 Select .
- 2 To zoom in, tap the map twice.
- 3 Select a location on the map.
- 4 Select **Done**

Tip: You can also select from the list of previously-used addresses.


To add a location to a meeting event later, open the meeting event, and select .

Use separate calendars for work and free time

You can have more than one calendar. Create one for work and others for your free time, such as family or hobbies.


Select .

Create a new calendar

- 1 Select  > **Manage calendars** > .
- 2 Enter a name, and set a colour code for the calendar. In different calendar views, the colour codes indicate to which calendar an event is saved.

When a calendar is hidden, the calendar events and reminders are not displayed in different calendar views or in the Events view.

Define the visibility for the calendar

Select  and **Applications** > **Calendar** > **Default calendar**.

Modify the settings for a calendar

Select  and **Applications** > **Calendar**.

Productivity

Use the calculator

Select .

- 1 Enter the first number of the calculation.
- 2 Select a function, such as add or subtract.
- 3 Enter the second number of the calculation.
- 4 Select =.

This feature is designed for personal use. Accuracy may be limited.

Read office documents

You can view documents, such as PDFs, Microsoft Office and Open Document Format documents, spreadsheets, and presentations.

Select .


Sort files by name, date, or document type

Select  > Sort by > Name, Time or Type

View a document in full screen mode

Select the document. To display the toolbar, tap the document.

Jump to a page

Select , and enter the page number.

Share a document


- 1 Select  > Share documents.
- 2 Select the sharing method.

Not all file formats or features are supported.

Make a shopping list

Shopping lists on paper are easy to lose. Instead of writing them on paper, you can make your shopping lists with **Notes**. This way, you always have the list with you!

Select .

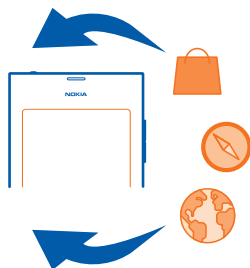
- 1 To add a new note, select .
- 2 Enter text in the note field.

Phone management

Keep your phone software and applications up to date

About phone software and application updates

With phone software updates and application updates, you can get new features and enhanced functions for your phone. Updating the software may also improve your phone performance. You may also receive important security updates.



It is recommended that you back up your personal data before updating your phone software.

Warning:

If you install a software update, you cannot use the device, even to make emergency calls, until the installation is completed and the device is restarted.

Using services or downloading content may cause transfer of large amounts of data, which may result in data traffic costs.

Before starting the update, connect a charger or make sure the device battery has enough power.

After the update, the instructions in the user guide may no longer be up to date.



View your software version

Select  and **About product** > **About product**.

Tip: You can also dial ***#0000#**.




Update phone software and applications using your phone

Your phone informs you when updates are available for your phone software or for individual applications. To keep your phone up to date, download and install the updates on your phone (network service). You can also check for updates manually.

When an update is available for your phone software, a notification message with the icon  is displayed in the Events view. Updates for individual applications are indicated with the icon . To view and install the available update, select the notification message.

It is recommended that you create a backup before updating your phone software.

Check for updates manually

- 1 Select  > **Applications** > **Manage applications**.
- 2 Open the  tab, and select  to refresh the view.

You can update individual applications or all available applications.

Update phone software using your PC

You can use the Nokia Software Updater PC application to update your phone software. You need a compatible PC, a high-speed internet connection, and a compatible USB data cable to connect your phone to the PC. To restore all your personal information to your phone, back up your phone to your computer before you start updating your phone.

You can download the Nokia Software Updater application from www.nokia.com/support.

Back up

Back up files

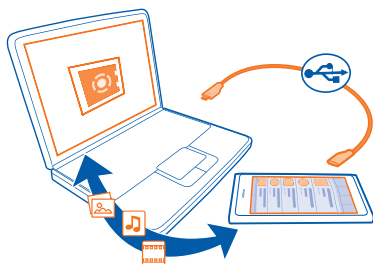
Want to make sure that you will not lose any important files? You can create backups of the phone memory.

Select  and **Sync and backup** > **Backup**.

It is recommended that you back up the phone memory regularly.

Tip: To restore a backup, select the backup file to restore and **Restore**, and follow the displayed instructions. You may not be able to restore some installed applications.

Large media files such as pictures and videos are not included in the phone backups. You can connect your phone in mass storage mode to a compatible computer, and copy your important files using the file manager of the computer.



Manage applications


About Applications

Select  > **Applications** > **Manage applications**.

You can update and remove application packages, such as applications and add-ons.


Install new applications

With Ovi Store, you can download mobile games, applications, and different kinds of add-ons to your phone.

Select  or go to www.ovi.com.

On some websites, to install an application, you can select a link to a file with the .deb file extension. To be able to install applications from mail attachments, file systems, websites, or repositories other than Ovi Store, you need to enable this in the installation settings.

Enable installation from outside Ovi Store

Select  and **Applications** > **Installations**, and activate **Allow installations from non-Store sources**.

Only install applications that are compatible with your phone.

 **Important:** Only install and use applications and other software from sources that you trust. Applications from untrusted sources may include malicious software that can access data stored in your device, cause financial harm, or damage your device.

View installed applications


Select  > **Applications** > **Manage applications**.

View the details of an application

Select the application.

Remove an application from your phone


You can remove installed applications that you no longer want to keep or use, to increase the amount of available memory.

Tap and hold the Applications view, and select  on the application.

Once confirmed and started, the uninstallation process cannot be cancelled.

If you remove an application, you may not be able to open files created with the removed application.


If an installed application depends on a removed application, the installed application may stop working. For details, see the user guide of the installed application.


To view the details of an application before removing it, select  > **Applications** > **Manage applications** and the application. To remove the application, select **Uninstall**.

Restore an application package

You can create a backup file for your phone and, if needed, later restore the application packages you want.

You may not be able to restore some of the installed applications.

- 1 Select  > **Sync and backup** > **Backup**.
- 2 Select a backup file to restore and **Restore**, and follow the displayed instructions.
- 3 After the restore, you are asked if you also want to restore application packages. If there are packages to be restored, to view the available packages, select **Yes**.
- 4 Select the application package to restore and **Restore**.

You can also restore application packages later. Select  > **Applications** > **Manage applications**.

Memory

Increase available memory so you can add more content

Do you need to increase the available phone memory, so you can install more applications or add more content?

You can delete the following if no longer needed:

- Text, multimedia, and mail messages

- Contact entries and details
- Applications
- Music, pictures, or videos

Copy content you want to keep to a compatible computer.

Synchronise content

Synchronise your important information

Would you like to have your contacts, calendar, notes, and other content backed up and at hand, whether you are sitting by your computer or on the go with your phone?

Synchronise your important content to online services, and access them from anywhere you go. You can also synchronise content with other phones.

Synchronise with online services

Select .

Synchronise with other phones

Select  > **Sync and backup** > **Sync**.

When you open the application, the default or previously used synchronisation profiles are displayed. You may receive synchronisation settings as a configuration message from your service provider.

Synchronise content with another phone

Keep your important information synchronised between, for example, your personal and work phone.

Select  > **Sync and backup** > **Sync**.

Create a sync profile

- 1 Select **Add device**.
- 2 Select the other phone and **Continue**
- 3 Follow the displayed instructions on both phones.
- 4 Select the content to synchronise. The available options may vary. You may also be able to select which phone's data you want to keep if there are conflicts, for example different phone numbers for the same contact.
- 5 To synchronise, select **Sync**.

Synchronise using an existing sync profile

Make sure Bluetooth is activated on both phones, and select **Sync**.

Include or exclude content types

In the desired profile, select the content types.

Remove a sync profile

In the desired profile, select .

Synchronise with online services

Have all your accounts, contacts, calendar entries, and other important information synchronised to your phone. Back up your important content online for easy transfer or restoring to your phone.

Select .

Synchronising with services is on by default.

Include or exclude content

Select an account and the content type to include or exclude.


The available options may vary.

Deactivate sync

Select an account, and deactivate sync using the switch next to the account name.

Protect your phone**Set your phone to lock automatically**

Want to protect your phone against unauthorised use? Define a security code, and set your phone to lock itself automatically when you're not using it.

- 1 Select  and **Security > Device lock**.
- 2 Select **Security code**, and enter a security code (at least 5 characters). You can use numbers, symbols, and upper and lower case letters.
Keep the security code secret and in a safe place separate from your phone. If you forget the security code, and cannot recover it, or you enter the wrong code too many times, your phone will require service. Additional charges may apply, and all the personal data in your phone may be deleted. For more information, contact a Nokia Care point or your phone dealer.
- 3 Select **Autolock**, and define the length of time after which the phone is locked automatically.

Unlock your phone

- 1 Press the power key, and swipe from the outside of the screen onto the touch screen. You can swipe from any direction.
- 2 Enter the security code, and select **OK**.

Tip: You can also tap the screen twice, and swipe from the outside of the screen onto the touch screen.

Tip: If you have defined a trusted person, if you ever forget your security code, you can send them the code in a text message. Select **Device lock** > **Trusted person** > **Select trusted person** and a contact from the list.

Phone lock settings

Select  and **Security** > **Device lock**, and from the following:

Autolock — Set the length of time before the phone locks automatically.

Security code — Change the security code. To use the phone lock, you need to define a security code.

Number of tries — Set a limit for incorrect security code attempts. After the limit is reached, the phone is reset to original settings and all user data is deleted.

Trusted person — Set one of your contacts as a trusted person. If you have defined a trusted person, if you ever forget your security code, you can send the code to the trusted person in a text message. After entering the incorrect security code, select **Recover**, and follow the displayed instructions.

Remote security features — Set up remote lock which can be used to remotely lock your phone or erase user data if your phone gets lost.

Hide private information from your notifications

Don't want to let other people see who has called you? When you have missed a call or received a message, a notification is displayed on the lock screen. You can define how much information is displayed.

Select  and **Notifications** > **Notifications**, and activate or deactivate **Hide private information**.

When Hide private information is activated, only the number of received messages and missed calls is displayed.

When Hide private information is not activated, when you have received a message or missed a call, the following information is displayed:


- The name of the person who has tried to call you
- The sender of the message you have received
- Part of the message content

Develop your own applications

You can create your own applications for the phone using an applicable software development kit (SDK).

You need to activate developer mode on the phone to be able to use it as a target for application development. Developer mode enables connectivity between the development host and the phone, and provides a few additional tools on the phone.

Activate developer mode

Select  and **Security > Developer mode**, and activate **Developer mode**.

It is recommended that you do not activate developer mode, unless you intend to develop applications for the phone. Activating developer mode does not expose the phone to security risks, but you may accidentally delete important system files.

For more information, go to developer.nokia.com.

Reset your phone


If your phone stops responding

Restart your phone. Press and hold the power key for at least 8 seconds. To switch your phone on again, press and hold the power key.

No content, such as contacts or messages, is deleted.

Restore original settings

If your phone is not working properly, you can reset some settings to their original values.

- 1 End all active calls and connections.
- 2 Select  and **Reset > Restore settings**.
- 3 If prompted, enter the security code.

After restoring the original settings, the phone switches off, and then on again. This may take longer than usual.


Restoring original settings does not affect personal data stored on your phone, such as:

- Contacts
- Calendar entries
- Documents, music, messages, or notes
- Internet bookmarks
- Accounts, security codes, or passwords

Prepare your phone for recycling

If you buy a new phone, or otherwise want to dispose of your phone, Nokia recommends that you recycle your phone. Beforehand, remove all personal information and content from your phone.

Remove all content and restore settings to the default values


- 1 Back up the content you want to keep to a compatible computer.
- 2 End all active connections and calls.
- 3 Select  and **Reset > Clear device**.
- 4 Your phone switches off and then on again. Check carefully that all your personal content, such as contacts, pictures, music, videos, notes, messages, mails, presentations, games, and other installed applications have been removed. Content and information stored on the SIM card is not removed.

Remember to remove your SIM card from the phone.


Battery**Prolong battery life**

If it seems you're always looking for a charger, there are steps you can take to reduce the power consumption of your phone, and keep talking for longer.

- Always charge the battery fully.
- When power saving mode is activated, the phone does not scan, or scans less often, for available WLAN networks, and closes connections when they are not used by any application.

Tip: To check the battery status, and activate power saving mode, select  and **Device > Battery**.

Close the applications you are not using

Tap and hold the Open applications view, and select **Close all**, or select  on the application you want to close.


Sounds and effects

- Mute unnecessary tones, such as key tones.
- Use wired headphones, rather than the loudspeaker.
- Change the length of the time-out period after which the phone display switches off.


Set the length of the time-out period

Select  and **Device > Display > Display time-out**.

Decrease display brightness

Select , and drag the Brightness slider.

Activate a dark wallpaper

Select  and **Wallpaper**.

Network use

- If you are listening to music or otherwise using your phone, but do not want to make or receive calls, activate the flight mode.
- Use a WLAN connection to connect to the internet, rather than a packet data (GPRS or 3G) connection.
- If your phone is set to use both GSM and 3G networks (dual mode), the phone uses more power when searching for the 3G network.

Set your phone to use only the GSM network

Select  and **Mobile network > Network mode > GSM**.

Deactivate Bluetooth when not needed

Select  and **Bluetooth**.

Establish a packet data (3G or GPRS) connection only when needed

Select  and **Mobile network > Data roaming** and activate **Always ask**.

Tips

Access codes


PIN code (4-8 digits)	<p>This protects your SIM card against unauthorised use or is required to access some features.</p> <p>You can set your device to ask for the PIN code when you switch it on.</p> <p>If not supplied with your SIM card or you forget the code, contact your service provider.</p> <p>If you enter the code incorrectly three times in a row, you need to unblock the code with the PUK code.</p>
PUK code (8 digits)	<p>This is required to unblock a PIN code.</p> <p>If not supplied with your SIM card, contact your service provider.</p>
IMEI number (15 digits)	<p>This is used to identify valid devices in the network. The number can also be used to block, for example, stolen devices.</p> <p>To view your IMEI number, dial *#06#.</p>
Lock code (security code) (min. 5 digits or characters)	<p>This helps you protect your device against unauthorised use.</p> <p>You can set your device to ask for the lock code that you define.</p> <p>Keep the code secret and in a safe place, separate from your device.</p> <p>If you forget the code and your device is locked, your device will require service. Additional charges may apply, and all the personal data in your device may be deleted.</p> <p>For more information, contact a Nokia Care Point or your device dealer.</p>

The personal unblocking key (PUK) code and the universal personal unblocking key (UPUK) code (8 digits) are required to change a blocked PIN code and UPIN code, respectively. These codes are not supplied with the SIM card. Contact your local service provider for the codes.

Send your security code to a trusted person

Want to protect your phone, but afraid you may forget your security code? Define a trusted person, and if you forget your security code, you can send the code to that trusted person.

Define your trusted person

Select  and **Security > Device lock > Trusted person > Select trusted person**, and select the desired contact.

Recover the code

After entering the incorrect security code, select **Recover**, and follow the displayed instructions.

Protect the environment

Save energy

You do not need to charge your battery so often if you do the following:

- Close applications and data connections, such as your Wi-Fi or Bluetooth connection, when not in use.
- Set your phone to enter power saver mode after the minimum period of inactivity.
- Deactivate unnecessary sounds, such as touch screen and key tones.

Recycle



When this phone has reached the end of its working life, all of its materials can be recovered as materials and energy. To guarantee the correct disposal and reuse, Nokia co-operates with its partners through a program called We:recycle. For information on how to recycle your old Nokia products and where to find collection sites, go to www.nokia.com/werecycle, or using your mobile phone, nokia.mobi/werecycle, or call the Nokia Contact Center.

Recycle packaging and user guides at your local recycling scheme.

For more information on the environmental attributes of your phone, go to www.nokia.com/ecodeclaration.

Product and safety information


Network services and costs

Your device is approved for use on the UMTS 850, 900, 1900, 1700/2100, 2100 MHz and GSM 850, 900, 1800, 1900 MHz networks.

To use the device, you need a subscription with a service provider.

Using network services and downloading content to your device requires a network connection and may result in data traffic costs. Some product features require support from the network, and you may need to subscribe to them.

View information about your phone

To view type approval notices and detailed information about your phone's software and hardware, select  and **About product** > **About product**.

Open source software notice

This product includes certain open source software.

The exact terms of the licences, disclaimers, acknowledgements, and notices are reproduced in the materials provided with this product. Nokia offers to provide you with the source code as defined in the applicable licence. Go to [harmattan-dev.nokia.com](mailto:sourcecode.request@nokia.com), or send a mail to sourcecode.request@nokia.com or a written request to:

Source Code Requests

Nokia Corporation

P.O.Box 226

FI-00045 Nokia Group

Finland

This offer is valid for a period of three (3) years from the date of the distribution of this product by Nokia.

By submitting a request, you give your consent that Nokia (or third parties on behalf and under direct authority of Nokia) will process your personal data. The processing will be done for the purpose of the request and the undertakings related to it. The main reason for storing this data is to prove compliance with the license terms. The data processing will be done in compliance with Nokia guidelines and applicable legislation.

Take care of your device

Handle your device, battery, charger and accessories with care. The following suggestions help you protect your warranty coverage.

- Keep the device dry. Precipitation, humidity, and all types of liquids or moisture can contain minerals that corrode electronic circuits. If your device gets wet, allow the device to dry.
- Do not store the device in cold temperatures.
- Do not attempt to open the device other than as instructed in the user guide.
- Unauthorised modifications may damage the device and violate regulations governing radio devices.
- Do not drop, knock, or shake the device.
- Only use a soft, clean, dry cloth to clean the surface of the device.
- Keep your device away from magnets or magnetic fields.
- To keep your important data safe, store it in at least two separate places, such as your device, memory card, or computer, or write down important information.

During extended operation, the device may feel warm. In most cases, this is normal. If you suspect the device is not working properly, take it to the nearest authorised service facility.

Recycle

Always return your used electronic products, batteries, and packaging materials to dedicated collection points. This way you help prevent uncontrolled waste disposal and promote the recycling of materials. Check how to recycle your Nokia products at www.nokia.com/werecycle, or with a mobile device, nokia.mobi/werecycle.

Batteries and chargers

Battery and charger information


Your device has an internal, non-removable, rechargeable battery. Do not attempt to remove the battery, as you may damage the device. To replace the battery, take the device to the nearest authorised service facility.

This device is intended for use when supplied with power from the following chargers: AC-16. The exact Nokia charger model number may vary depending on the plug type, identified by E, X, AR, U, A, C, K, or B.

Third-party chargers that comply with the IEC/EN 62684 standard, and that can connect to your device micro USB connector, may be compatible.

The battery can be charged and discharged hundreds of times, but it will eventually wear out. When the talk and standby times are noticeably shorter than normal, to replace the battery, take the device to the nearest authorised service facility.

Battery safety

 **Note:** The battery in your device is non-removable, so refer to the battery-related statements as applicable to your device.

When you unplug a charger or an accessory, hold and pull the plug, not the cord.

When your charger is not in use, unplug it from the electrical plug and the device. Do not leave a fully charged battery connected to a charger, as overcharging may shorten the battery's lifetime. If left unused, a fully charged battery will lose its charge over time.

Always keep the battery between 15°C and 25°C (59°F and 77°F). Extreme temperatures reduce the capacity and lifetime of the battery. A device with a hot or cold battery may not work temporarily.

Accidental short-circuiting can happen when a metallic object touches the metal strips on the battery. Short-circuiting may damage the battery or the connecting object.

Do not dispose of batteries in a fire as they may explode. Dispose of batteries according to local regulations. Recycle when possible. Do not dispose as household waste.




Do not dismantle, cut, open, crush, bend, puncture, or shred cells or batteries. If a battery leaks, do not let battery liquid touch skin or eyes. If this happens, immediately flush the affected areas with water, or seek medical help.

Do not modify, remanufacture, attempt to insert foreign objects into the battery, or immerse or expose it to water or other liquids. Batteries may explode if damaged.


Use the battery and charger for their intended purposes only. Improper use, or use of unapproved batteries or incompatible chargers may present a risk of fire, explosion, or other hazard, and may invalidate any approval or warranty. If you believe the battery or charger is damaged, take it to a service centre for inspection before continuing to use it. Never use a damaged battery or charger. Only use the charger indoors.


Additional safety information


Make an emergency call

- 1 Make sure the phone is switched on.
- 2 Check for adequate signal strength. You may also need to do the following:
 - Insert a SIM card.
 - Make sure flight mode is not activated.
 - If the phone screen and keys are locked, unlock them.
- 3 Go to the Applications view, and select  and .
- 4 Enter the official emergency number for your present location.
- 5 Select  to start the call.
- 6 Give the necessary information as accurately as possible. Do not end the call until given permission to do so.

Make an emergency call without entering PIN, PUK, or security code

- 1 When the phone asks for the code, select .
- 2 Enter the emergency number for your present location.
- 3 Select Call to start the call. After the emergency call, you need to enter the required PIN, PUK, or security code to be able to use other phone functions.

When you switch your phone on for the first time, you are asked to create your Nokia account. To make an emergency call during the account setup, select .

 **Important:** Emergency calls can be made using the cellular phone. It is not possible to make an emergency call using voice calls over the internet (internet calls). Connections in all conditions cannot be guaranteed. Never rely solely on any wireless device for essential communications like medical emergencies

Small children

Your device and its accessories are not toys. They may contain small parts. Keep them out of the reach of small children.

Medical devices

Operation of radio transmitting equipment, including wireless phones, may interfere with the function of inadequately protected medical devices. Consult a physician or the manufacturer of the medical device to determine whether they are adequately shielded from external radio frequency energy.

Implanted medical devices

Manufacturers of medical devices recommend a minimum separation of 15.3 centimetres (6 inches) between a wireless device and an implanted medical device, such as a pacemaker or implanted cardioverter defibrillator, to avoid potential interference with the medical device. Persons who have such devices should:


- Always keep the wireless device more than 15.3 centimetres (6 inches) from the medical device.
- Not carry the wireless device in a breast pocket.
- Hold the wireless device to the ear opposite the medical device.
- Turn the wireless device off if there is any reason to suspect that interference is taking place.
- Follow the manufacturer directions for the implanted medical device.

If you have any questions about using your wireless device with an implanted medical device, consult your health care provider.

Accessibility solutions


Nokia is committed to making mobile phones easy to use for all individuals, including those with disabilities. For more information, visit the Nokia website at www.nokiaaccessibility.com.

Hearing

 **Warning:**
When you use the headset, your ability to hear outside sounds may be affected. Do not use the headset where it can endanger your safety.

Some wireless devices may interfere with some hearing aids.

Nickel

 **Note:** The surface of this device does not contain nickel in the platings. The surface of this device contains stainless steel.

Protect your device from harmful content

Your device may be exposed to viruses and other harmful content. Take the following precautions:

- Be cautious when opening messages. They may contain malicious software or otherwise be harmful to your device or computer.
- Be cautious when accepting connectivity requests, browsing the internet, or downloading content. Do not accept Bluetooth connections from sources you do not trust.

106 Product and safety information

- Only install and use applications and other software from sources that you trust. Applications from untrusted sources may include malicious software that can access data stored in your device, cause financial harm, or damage your device.
- Install antivirus and other security software on your device and any connected computer. Only use one antivirus application at a time. Using more may affect performance and operation of the device and/or computer.
- If you access preinstalled bookmarks and links to third party internet sites, take the appropriate precautions. Nokia does not endorse or assume liability for such sites.

Operating environment

This device meets radio frequency exposure guidelines in the normal use position at the ear or at least 1.5 centimetres (5/8 inch) away from the body. Any carry case, belt clip, or holder for body-worn operation should not contain metal and should position the device the above-stated distance from your body.

To send data files or messages requires a quality connection to the network. Data files or messages may be delayed until such a connection is available. Follow the separation distance instructions until the transmission is completed.

Parts of the device are magnetic. Metallic materials may be attracted to the device. Do not place credit cards or other magnetic storage media near the device, because information stored on them may be erased.

Vehicles

Radio signals may affect improperly installed or inadequately shielded electronic systems in motor vehicles such as electronic fuel injection, electronic antilock braking, electronic speed control, and air bag systems. For more information, check with the manufacturer of your vehicle or its equipment.

Only qualified personnel should install the device in a vehicle. Faulty installation or service may be dangerous and may invalidate your warranty. Check regularly that all wireless device equipment in your vehicle is mounted and operating properly. Do not store or carry flammable liquids, gases, or explosive materials in the same compartment as the device, its parts, or accessories. Remember that air bags inflate with great force. Do not place your device or accessories in the air bag deployment area.

Potentially explosive environments

Switch off your device in any area with a potentially explosive atmosphere, for example near gas pumps at service stations. Sparks in such areas could cause an explosion or fire resulting in bodily injury or death. Observe restrictions in fuel service stations, storage, and distribution areas; chemical plants; or where blasting operations are in progress. Areas with a potentially explosive atmosphere are often, but not always, clearly marked. They include areas where you would be advised to turn off your vehicle engine, below deck on boats, chemical transfer or storage facilities and where the air contains chemicals or particles such as grain, dust, or metal powders. You should check with the manufacturers of vehicles using liquefied petroleum gas (such as propane or butane) to determine if this device can be safely used in their vicinity.

Certification information (SAR)

This mobile device meets guidelines for exposure to radio waves.

Your mobile device is a radio transmitter and receiver. It is designed not to exceed the limits for exposure to radio waves recommended by international guidelines. These guidelines were developed by the independent scientific organisation ICNIRP and include safety margins designed to assure the protection of all persons, regardless of age and health.

The exposure guidelines for mobile devices employ a unit of measurement known as the Specific Absorption Rate or SAR. The SAR limit stated in the ICNIRP guidelines is 2.0 watts/kilogram (W/kg) averaged over 10 grams of tissue. Tests for SAR are conducted using standard operating positions with the device transmitting at its highest certified power level in all tested frequency bands. The actual SAR level of an operating device can be below the maximum value because the device is designed to use only the power required to reach the network. That amount changes depending on a number of factors such as how close you are to a network base station.

The highest SAR value under the ICNIRP guidelines for use of the device at the ear is 1.16 W/kg.

Use of device accessories may result in different SAR values. SAR values may vary depending on national reporting and testing requirements and the network band. Additional SAR information may be provided under product information at www.nokia.com.

Your mobile device is also designed to meet the requirements for exposure to radio waves established by the Federal Communications Commission (USA) and Industry Canada. These requirements set a SAR limit of 1.6 W/kg averaged over one gram of tissue. The highest SAR value reported under this standard during product certification for use at the ear is 1.18 W/kg and when properly worn on the body is 1.18 W/kg.

DECLARATION OF CONFORMITY



Hereby, NOKIA CORPORATION declares that this RM-696 product is in compliance with the essential requirements and other relevant provisions of Directive 1999/5/EC. A copy of the Declaration of Conformity can be found at http://www.nokia.com/phones/declaration_of_conformity/.

© 2011 Nokia. All rights reserved.

Nokia, Nokia Connecting People, Nokia Original Accessories logo, and Ovi are trademarks or registered trademarks of Nokia Corporation. Nokia tune is a sound mark of Nokia Corporation. Other product and company names mentioned herein may be trademarks or tradenames of their respective owners.

Reproduction, transfer, distribution, or storage of part or all of the contents in this document in any form without the prior written permission of Nokia is prohibited. Nokia operates a policy of continuous development. Nokia reserves the right to make changes and improvements to any of the products described in this document without prior notice.

When using this device, obey all laws and respect local customs, privacy and legitimate rights of others, including copyrights. Copyright protection may prevent you from copying, modifying, or transferring images, music, and other content.

Manufactured under license from Dolby Laboratories.

Dolby and the double-D symbol are trademarks of Dolby Laboratories.

The Bluetooth word mark and logos are owned by the Bluetooth SIG, Inc. and any use of such marks by Nokia is under license.

This product is licensed under the MPEG-4 Visual Patent Portfolio License (i) for personal and noncommercial use in connection with information which has been encoded in compliance with the MPEG-4 Visual Standard by a consumer engaged in a personal and noncommercial activity and (ii) for use in connection with MPEG-4 video provided by a licensed video provider. No license is granted or shall be implied for any other use. Additional information, including that related to promotional, internal, and commercial uses, may be obtained from MPEG LA, LLC. See <http://www.mpegla.com>.

To the maximum extent permitted by applicable law, under no circumstances shall Nokia or any of its licensors be responsible for any loss of data or income or any special,

incidental, consequential or indirect damages howsoever caused.

The contents of this document are provided "as is". Except as required by applicable law, no warranties of any kind, either express or implied, including, but not limited to, the implied warranties of merchantability and fitness for a particular purpose, are made in relation to the accuracy, reliability or contents of this document. Nokia reserves the right to revise this document or withdraw it at any time without prior notice.

Reverse engineering of software in the device is prohibited to the extent permitted by applicable law. Insofar as this user guide contains any limitations on Nokia's representations, warranties, damages and liabilities, such limitations shall likewise limit any representations, warranties, damages and liabilities of Nokia's licensors.

The availability of products, features, applications and services may vary by region. For more information, contact your Nokia dealer or your service provider. This device may contain commodities, technology or software subject to export laws and regulations from the US and other countries. Diversion contrary to law is prohibited.

Nokia does not provide a warranty for or take any responsibility for the functionality, content, or end-user support of third-party applications provided with your device. By using an application, you acknowledge that the application is provided as is. Nokia does not make any representations, provide a warranty, or take any responsibility for the functionality, content, or end-user support of third-party applications provided with your device.

The availability of Ovi services may vary by region.

FCC/INDUSTRY CANADA NOTICE

Your device may cause TV or radio interference (for example, when using a telephone in close proximity to receiving equipment). The FCC or Industry Canada can require you to stop using your telephone if such interference cannot be eliminated. If you require assistance, contact your local service facility. This device complies with part 15 of the FCC rules and Industry Canada licence-exempt RSS standard(s). Operation is subject to the following two conditions: (1) This device may not cause harmful interference, and (2) this device must accept any interference received, including interference that may cause undesired operation. Any changes or modifications not expressly approved by Nokia could void the user's authority to operate this equipment. The FCC ID and IC certification number are printed inside the SIM card slot. To view the ID and certification number, remove the SIM card holder.



Some operations and features are SIM card and/or network dependent, MMS dependent, or dependent on the compatibility of devices and the content formats supported. Some services are subject to a separate charge.

/Issue 1 EN

Index**Symbols/Numbers**

62

A

A-GPS (assisted GPS)	73
access codes	100
Accounts	95
accounts	54, 56
alarm clock	85
antennas	8
applications	16, 17, 18, 92, 93
— developing	96
availability	44
availability status	53

B

backing up content	91
battery	11, 103, 104
— charging	10, 11
— saving power	98
blogs	39
Bluetooth	35, 36
bookmarks	39
browser	
See <i>web browser</i>	

C

cable connection	37
calculator	88
calendar	58, 86, 87, 88
call waiting	50
calls	46, 47, 49, 51
— answering	48
— conference	46
— dismissing	48
— diverting	49
— emergency	104
— forwarding	49
— internet calls	51, 52

— last dialled	51
— log	50
— making	46
— rejecting	48
camera	64
— location information	66
— recording videos	67
— sending pictures	67
— sending videos	67
— sharing pictures	68
— sharing videos	68
— taking pictures	64, 65, 66
charging the battery	10, 11, 103
chat services (IM)	54, 56
clock	85, 86
connectivity	31
contacts	41, 44
— adding	41
— copying	14, 43
— editing	41
— favourites	42
— groups	43
— in social networks	43, 44
— pictures	42
— ringtones	42
— saving	41
— synchronising	94, 95
copying content	12, 37, 61, 94

D

data connections	30, 31
— Bluetooth	35
— costs	31
— packet data	31
— WLAN	31
date and time	86
device lock	22, 95
diverting calls	49
Dolby™	62
Drive	
— changing views	84
— map view	84

— navigating	83
— routes	83
— voice guidance	83

E

e-mail	56
<i>See mail</i>	
emergency calls	104
environmental tips	102
event	87

F

factory settings, restoring	97
favourites	42
feeds, news	39
file management	91
flight mode	26
forwarding calls	49

G

Gallery	69
GPS (global positioning system)	73, 74

H

headphones	62
headset	7, 36, 62
help	14
home screen	16

I

icons	19
IM (instant messaging)	54, 56
Image editor	72
IMEI number	100
inbox, messages	55
indicators	19
installing applications	92
internet	
<i>See web browser</i>	
internet calls	51, 52
internet connection	30

K

keyboard	23
keyguard	13
keys and parts	6, 7

L

language settings	56
location information	66, 73, 87
lock code	22, 23, 95, 96, 100, 101
locking	
— device	23, 96
— keys	13
— phone	22, 23, 95, 96, 101
— screen	13
log	50
loudspeaker	25, 50

M

mail	56, 57, 58
— attachments	57
— creating	57
— mailbox	56
— reading and replying to	57
— sending	57
— setup	56
Mail for Exchange	57, 58
mailbox	
— voice	49
Maps	74
— changing views	77
— current location	75
— downloading maps	79
— feedback	82
— finding locations	79
— guidance	77
— map view	75, 77
— navigating	82
— offline	79
— positioning	73
— saved places	80, 81
— saving places	80
— sharing locations	81

— walking routes	82
meeting requests	58
memory	97
— clearing	93
menu	18
messages	54, 55
— sending	55
MMS (multimedia message service)	55
mobile data connection	31
multimedia messages	54, 55
multitasking	17
music	60, 61

N

news feeds	39
NFC (Near Field Communication)	33, 34
Nokia account	27
Nokia Link	14
Nokia support information	14
notes	89
notifications	96

O

office applications	88
Ovi account	
<i>See Nokia account</i>	
Ovi by Nokia	27
Ovi Maps	28
Ovi Music	28
Ovi Store	28

P

personalising your device	29
personalising your phone	29
phone	
— rebooting	97
— setup	12
— switching on/off	12, 97
phone lock	22, 95
phonebook	
<i>See contacts</i>	

pictures	
— copying	37
— editing	72
— location information	66
— organising	70
— sending	36, 67
— sharing	68
— taking	64, 65, 66
— viewing	69, 71
— viewing on a TV	71
PIN codes	100
positioning information	73
powering on/off	12
powering phone on/off	97
profiles	26
PUK codes	100

Q

quick launch bar	17
------------------	----

R

rebooting	97
recording	
— videos	67
recycling	102
restoring content	93
restoring settings	97
ringing tones	48
ringtones	42

S

searching	27
security code	22, 23, 95, 96, 100, 101
settings	
— access points	30
— language	56
— restoring	97
sharing, online	68
shortcuts	29
silent profile	26
SIM card	8, 43
SMS (short message service)	55

social networks	43, 44	— organising	70
software	90	— playing	61, 62
software updates	90, 91	— recording	67
speakerphone	25	— sending	36, 67
status menu	17	— sharing	68
status updates	43, 44	— streaming	62
support	14	— watching	61, 62, 69, 71
switching on/off	12	— watching on a TV	71
switching phone on/off	97	virtual keyboard	23
synchronisation	58, 94, 95	voice calls	

T		See <i>calls</i>	
----------	--	------------------	--

tags	70	volume control	25
------	----	----------------	----

taking pictures		W	
-----------------	--	----------	--

See *camera*

tasks	86	wallpaper	29
technical information	102	web browser	38
text input	23, 25	— bookmarks	39
text messages	54, 55	web connection	30
time and date	86	web feeds	39
touch screen	20, 23	WLAN (wireless local area network)	32

transfer			
----------	--	--	--

— content	94		
-----------	----	--	--

transferring content	12, 14, 37, 61, 94		
----------------------	--------------------	--	--

turning on/off	12		
----------------	----	--	--

turning phone on/off	97		
----------------------	----	--	--

TV			
----	--	--	--

— viewing pictures	71		
--------------------	----	--	--

U			
----------	--	--	--

updates			
---------	--	--	--

— applications	90, 91		
----------------	--------	--	--

— phone software	90, 91		
------------------	--------	--	--

USB charging	11		
--------------	----	--	--

USB connection	37		
----------------	----	--	--

user guide	14		
------------	----	--	--

V			
----------	--	--	--

videos	61		
--------	----	--	--

— copying	37, 61		
-----------	--------	--	--

— downloading	62		
---------------	----	--	--

— location information	66		
------------------------	----	--	--