



Tomorrow's Technology at Today's Prices



***Indoor and Outdoor
Enclosures***

Outdoor Nema 3, 3R, 4, 4X Cabinet Enclosures • LTE • Wimax • Telecom • Security • Traffic

**New 2012 LTE-4G
Enclosures
UL, CSA and ETL Certified**

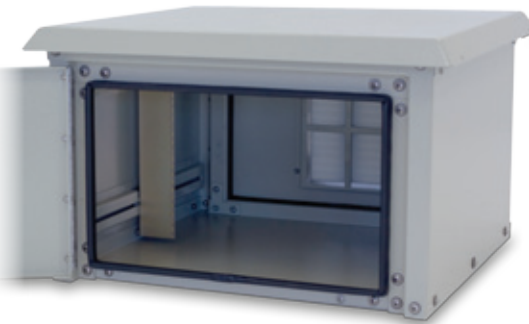




<i>Single Bay Outdoor</i>	<i>Pages 1-14</i>
<i>Wimax & LTE-4G Configurations</i>	<i>Pages 15-18</i>
<i>Double Bay Outdoor</i>	<i>Pages 19-32</i>
<i>Triple Bay Outdoor</i>	<i>Pages 33-44</i>
<i>Single Door Pad Mount/Pole or Wall</i>	<i>Pages 45-56</i>
<i>Enclosure Assemblies</i>	<i>Pages 57-59</i>
<i>Battery Enclosures</i>	<i>Pages 60-61</i>
<i>Traffic Enclosures</i>	<i>Pages 62-65</i>
<i>Indoor Rackmount - ST Series</i>	<i>Pages 66-72</i>
<i>Indoor Rackmount - SY Series</i>	<i>Pages 73-76</i>
<i>Pole/Wall Small Box</i>	<i>Pages 77-89</i>
<i>Climate Control</i>	<i>Pages 90-93</i>
<i>Accessories</i>	<i>Pages 94-97</i>

OD-16DXC

16" H x 25" D (7 RU) Outdoor Enclosure



General

Weight

- 70 Lbs. assembled
- 120 Lbs. shipping weight

Doors

- 2, Secured quarter turn HD hasp
- Locks via customer supplied padlocks
- Sealed with .875" aluminum filled gaskets

Material

- .125" Alumiflex™
- Finish: Painted cream
- RF properties: Non-ferrous

Vents

- 30 louvers per door
- 12 top louvers – In top cover, under Alumishield™
- One removable filter panel per door
- 12 fixed filter pads in top cover

Handles

- Stainless steel, padlocking

Racking Specifications

Rails

- One set standard (for additional rails see accessories)
- Alodine coated
- Holes tapped for 10-32 threads
- Each rail supported by two R-STRUTS™
- .125" Material (Alumiflex™)

Spacing

- 19" or 23" Racking available

Useable Height

- Usable racking height has been revised to only fit in the opening of the door jam which is cabinet height minus 3.75"
- Maximum: 12.75"
- Number of rack units per rail set: 7
- Total number of rack units: 7

Useable Depth

- Maximum: 21.5" Minimum: 19.75"

Inside Clearance - Less Rails

Height

- 16.73"

Width

- 23.625"

Depth

- See racking specifications
- Useable depth

Ratings

NEMA Class Types available

- NEMA 3R (Vented), NEMA 4 (closed loop-a/c) , NEMA 4X

Paint Tested

- 1000 Hour salt spray (textured)
- 1000 Hour immersion

Door Opening Clearance

Height

- 12.75"

Width

- 19.5"

Exterior Cabinet Dimensions

Main Body

- Height: 16.98"
- Width: 25.5"
- Depth: 25"

Alumishield™

- Hang down height: 1.75"
- Width: 28.46"
- Depth: 27.67"

Handles

- Protrude 1.875"

Total Space Occupied

- Height: 17.605"
- Width: 28.46"
- Depth: 28.75"

	*Section Starting & Ending Points	Vertical Height Per Section	Effective Depth For Each Section
Top	12.75" – 16.98"	3.25"	21.50"
	12.57" – 12.75"	.18"	20.50"
	12.57"	15.57	21.50"
Center	13.185" - 5.40"	7.94"	19.75"
	3.43" - 19.00"	15.57	21.50"
	3.25" – 3.43"	.18"	20.50"
Bottom	0.00" – 3.25"	3.25"	21.50"

OD-16DDC

16" H x 34" D (14 RU) Outdoor Enclosure



General

Weight

- 80 Lbs. assembled
- 130 Lbs. shipping weight

Doors

- 2, Secured quarter turn HD hasp
- Locks via customer supplied padlocks
- Sealed with .875" aluminum filled gaskets

Material

- .125" Alumiflex™
- Finish: Painted cream
- RF properties: Non-ferrous

Vents

- 30 louvers per door
- 12 top louvers – In top cover, under Alumishield™
- One removable filter panel per door
- 12 fixed filter pads in top cover

Handles

- Stainless steel, padlocking

Racking Specifications

Rails

- Two sets 19" rails standard (for additional rails see accessories)
- Alodine coated
- Holes tapped for 10-32 threads
- Each rail supported by two R-STRUTS™
- .125" Material (Alumiflex™)

Spacing

- 19" or 23" Racking available

Useable Height

- Usable racking height has been revised to only fit in the opening of the door jam which is cabinet height minus 3.75"
- Maximum: 12.75"
- Number of rack units per rail set: 7
- Total number of rack units: 14

Useable Depth

- Maximum: 30.5" Minimum: 28.75"

Inside Clearance - Less Rails

Height

- 16.73"

Width

- 23.625"

Depth

- See racking specifications
- Useable depth

Ratings

NEMA Class Types available

- NEMA 3R (Vented), NEMA 4 (closed loop-a/c) , NEMA 4X

Paint Tested

- 1000 Hour salt spray (textured)
- 1000 Hour immersion

Door Opening Clearance

Height

- 12.75"

Width

- 19.5"

Exterior Cabinet Dimensions

Main Body

- Height: 16.98"
- Width: 25.5"
- Depth: 37.75"

Alumishield™

- Hang down height: 1.75"
- Width: 28.46"
- Depth: 36.67"

Handles

- Protrude 1.875"

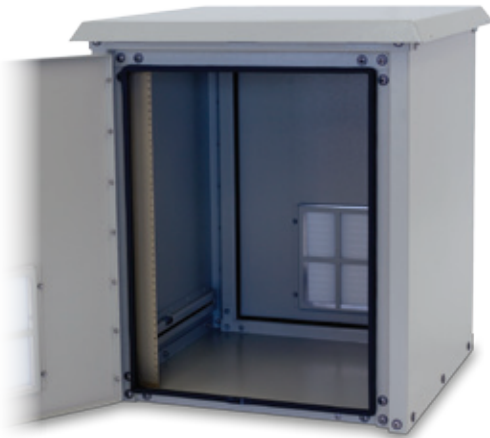
Total Space Occupied

- Height: 17.605"
- Width: 28.46"
- Depth: 37.75"

	*Section Starting & Ending Points	Vertical Height Per Section	Effective Depth For Each Section
Top	12.75" – 16.98"	3.25"	30.50"
	12.57" – 12.75"	.18"	29.50"
	12.57"	15.57"	30.50"
Center	13.185" – 5.40"	7.94"	28.75"
	3.43" – 19.00"	15.57"	30.50"
	3.25" – 3.43"	.18"	29.50"
Bottom	0.00" – 3.25"	3.25"	30.50"

OD-30DXC

30" H x 25" D (15 RU) Outdoor Enclosure



General

Weight

- 90 Lbs. assembled
- 130 Lbs. shipping weight

Doors

- 2, secured by three point locking system
- Sealed with .875" aluminum filled gaskets

Material

- .125" Alumiflex™
- Finish: Painted cream
- RF properties: Non-ferrous

Vents

- 30 bottom louvers per door
- 12 top louvers – in top cover, under Alumishield™
- One removable filter panel per door
- 12 fixed filter pads in top cover

Handles

- Stainless steel, padlocking

Racking Specifications

Rails

- One set standard (for additional rails see accessories)
- Alodine coated
- Holes tapped for 10-32 threads
- Each rail supported by two R-STRUTS™
- .125" Material (Alumiflex™)

Spacing

- 19" or 23" Racking available

Useable Height

- Usable racking height has been revised to only fit in the opening of the door jam which is cabinet height minus 3.75"
- Maximum: 12.75"
- Number of rack units per rail set: 15
- Total number RU's: 15

Useable Depth

- Maximum: 21.5" Minimum: 19.75"

Inside Clearance - Less Rails

Height

- 30.73"

Width

- 23.625"

Depth

- See racking specifications
- Useable depth

Ratings

NEMA Class Types available

- NEMA 3R (Vented), NEMA 4 (closed loop-a/c) , NEMA 4X

Paint Tested

- 1000 Hour salt spray (textured)
- 1000 Hour immersion

Door Opening Clearance

Height

- 26.75"

Width

- 19.5"

Exterior Cabinet Dimensions

Main Body

- Height: 30.98"
- Width: 25.5"
- Depth: 25"

Alumishield™

- Hang down height: 1.75"
- Width: 28.46"
- Depth: 27.67"

Handles

- Protrude 1.875"

Total Space Occupied

- Height: 31.605"
- Width: 28.46"
- Depth: 28.75"

	*Section Starting & Ending Points	Vertical Height Per section	Effective Depth For Each Section
Top	26.75" – 30.98"	3.25"	21.50"
	26.57" – 26.75"	.18"	20.50"
	21.00" – 26.57"	5.57"	21.50"
Center	9.00" – 21.00"	12.00"	19.75"
	3.43" – 9.00"	5.57"	21.50"
	3.25" – 3.43"	.18"	20.50"
Bottom	0.00" – 3.25"	3.25"	21.50"

OD-30DDC

30" H x 34" D (30 RU) Outdoor Enclosure



General

Weight

- 105 Lbs. assembled
- 155 Lbs. shipping weight

Doors

- 2, secured by three point locking system
- Locks via customer supplied padlocks
- Sealed with .875" aluminum filled gaskets

Material

- .125" Alumiflex™
- Finish: Painted cream
- RF properties: Non-ferrous

Vents

- 30 bottom louvers per door
- 12 top louvers – In top cover, under Alumishield™
- One removable filter panel per door
- 12 fixed filter pads in top cover

Handles

- Stainless steel, padlocking

Racking Specifications

Rails

- Two sets 19" rails standard (for additional rails see accessories)
- Alodine coated
- Holes tapped for 10-32 threads
- Each rail supported by two R-STRUTS™
- .125" Material (Alumiflex™)

Spacing

- 19" or 23" Racking available

Useable Height

- Usable racking height has been revised to only fit in the opening of the door jam which is cabinet height minus 3.75"
- Maximum: 26.75"
- Number of rack units per rail set: 15
- Total number RU's: 30

Useable Depth

- Maximum: 30.5" Minimum: 28.75"

Inside Clearance - Less Rails

Height

- 30.73"

Width

- 23.625"

Depth

- See racking specifications – Useable depth

Ratings

NEMA Class Types available

- NEMA 3R (Vented), NEMA 4 (closed loop-a/c) , NEMA 4X

Paint Tested

- 1000 Hour salt spray (textured)
- 1000 Hour immersion

Door Opening Clearance

Height

- 26.75"

Width

- 19.5"

Exterior Cabinet Dimensions

Main Body

- Height: 30.98"
- Width: 25.5"
- Depth: 34"

Alumishield™

- Hang down height: 1.75"
- Width: 28.46"
- Depth: 36.67"

Handles

- Protrude 1.875"

Total Space Occupied

- Height: 31.605"
- Width: 28.46"
- Depth: 37.75"

	*Section Starting & Ending Points	Vertical Height Per section	Effective Depth For Each Section
Top	26.75" – 30.98"	3.25"	30.50"
	26.57" – 26.75"	.18"	29.50"
	21.00" – 26.57"	5.57"	30.50"
Center	9.00" – 21.00"	12.00"	28.75"
	3.43" – 9.00"	5.57"	30.50"
	3.25" – 3.43"	.18"	29.50"
Bottom	0.00" – 3.25"	3.25"	30.50"

IOD-46DXC

46" H x 25" W x 30" D (23 RU) Indoor/Outdoor Enclosure



Shown with optional fan

General

Weight

- 132 Lbs. assembled
- 180 Lbs. shipping weight

Doors

- 2, secured by three point locking system
- Locks via customer supplied padlocks
- Sealed with .875" aluminum filled gaskets

Material

- .125" Alumiflex™
- Finish: Painted cream
- RF properties: Non-ferrous

Vents

- 30 bottom louvers per door
- One removable filter panel per door

Handles

- Stainless steel, padlocking

Racking Specifications

Rails

- Four standard (for additional rails see accessories)
- Alodine coated
- Holes tapped for 10-32 threads
- Each rail supported by three R-STRUTS™
- .125" Material (Alumiflex™)

Spacing

- 19" or 23" Racking available

Useable Height

- 46"

Useable Depth

- Maximum: 26.375" Minimum: 25.75"

Removable Front Door

Opening Clearance

- Height: 41.75"
- Width: 19.5"

Removable Back Door

Opening Clearance

- Height: 37"
- Width: 19.5"

Inside Clearance - Less Rails

Height

- 46"

Width

- 23.625"

Depth

- See racking specifications
– Useable depth

Ratings

NEMA Class Types available

- Class 250 Type 4X

Paint Tested

- 1000 Hour salt spray (textured)
- 1000 Hour immersion

Door Opening Clearance

Height

- 42"

Width

- 19.5"

Exterior Cabinet Dimensions

Main Body

- Height: 46.25"
- Width: 25.5"
- Depth: 30"

Handles

- Protrude 1.875"

Total Space Occupied

- Height: 46.375"
- Width: 25.625"
- Depth: 34"

OD-50DXC

50" H x 25" D (26 RU) Outdoor Enclosure



General

Weight

- 120 Lbs. assembled
- 170 Lbs. shipping weight

Doors

- 2, secured by three point locking system
- Locks via customer supplied padlocks
- Sealed with .875" aluminum filled gaskets

Material

- .125" Alumiflex™
- Finish: Painted cream
- RF properties: Non-ferrous

Vents

- 30 bottom louvers per door
- 12 top louvers – In top cover, under Alumishield™
- One removable filter panel per door
- 12 fixed filter pads in top cover

Handles

- Stainless steel, padlocking

Racking Specifications

Rails

- One Set Standard (for additional rails see accessories)
- Alodine coated
- Holes tapped for 10-32 threads
- Each rail supported by three R-STRUTS™
- .125" Material (Alumiflex™)

Spacing

- 19" or 23" Racking available

Useable Height

- Usable racking height has been revised to only fit in the opening of the door jam which is cabinet height minus 3.75"
- Maximum: 46.25"
- Number of rack units per rail set: 26
- Total number RU's: 26
- **Useable Depth**
- Maximum: 21.5" Minimum: 19.75"

Inside Clearance - Less Rails

Height

- 49.98"

Width

- 23.625"

Depth

- See racking specifications – Useable depth

Ratings

NEMA Class Types available

- NEMA 3R (Vented), NEMA 4 (closed loop-a/c) , NEMA 4X

Paint Tested

- 1000 Hour salt spray (textured)
- 1000 Hour immersion

Door Opening Clearance

Height

- 46"

Width

- 19.5"

Exterior Cabinet Dimensions

Main Body

- Height: 50.23"
- Width: 25.5"
- Depth: 25"

Alumishield™

- Hang down height: 1.75"
- Width: 28.46"
- Depth: 27.67"

Handles

- Protrude 1.875"

Total Space Occupied

- Height: 50.855"
- Width: 28.46"
- Depth: 28.75"

	*Section Starting & Ending Points	Vertical Height Per section	Effective Depth For Each Section
Top	46.75" – 50.23"	3.25"	21.50"
	46.57" – 46.75"	.18"	20.50"
	31.00" - 46.57"	15.57"	21.50"
Center	19.00"-31.00"	12.00"	19.75"
	3.43" – 19.00"	15.57"	21.50"
	3.25" – 3.43"	.18"	20.50"
Bottom	0.00" – 3.25"	3.25"	21.50"

OD-50DDC

50" H x 34" D (52 RU) Outdoor Enclosure



General

Weight

- 150 Lbs. assembled
- 205 Lbs. shipping weight

Doors

- 2, secured by three point locking system
- Locks via customer supplied padlocks
- Sealed with .875" aluminum filled gaskets

Material

- .125" Alumiflex™
- Finish: Painted cream
- RF properties: Non-ferrous

Vents

- 30 bottom louvers per door
- 12 top louvers – In top cover, under Alumishield™
- One removable filter panel per door
- 12 fixed filter pads in top cover

Handles

- Stainless steel, padlocking

Racking Specifications

Rails

- Two sets 19" Rails standard (for additional rails see accessories)
- Alodine coated
- Holes tapped for 10-32 threads
- Each rail supported by three R-STRUTS™
- .125" Material (Alumiflex™)

Spacing

- 19" or 23" Racking available

Useable Height

- Usable racking height has been revised to only fit in the opening of the door jam which is cabinet height minus 3.75"
- Maximum: 46.25"
- Number of rack units per rail set: 26
- Total number RU's: 52

Useable Depth

- Maximum: 30.5" Minimum: 28.75"

Inside Clearance - Less Rails

Height

- 50"

Width

- 23.625"

Depth

- See racking specifications – Useable depth

Ratings

NEMA Class Types available

- NEMA 3R (Vented), NEMA 4 (closed loop-a/c) , NEMA 4X

Paint Tested

- 1000 Hour salt spray (textured)
- 1000 Hour immersion

Door Opening Clearance

Height

- 46"

Width

- 19.5"

Exterior Cabinet Dimensions

Main Body

- Height: 50.23"
- Width: 25.5"
- Depth: 34"

Alumishield™

- Hang down height: 1.75"
- Width: 28.46"
- Depth: 36.67"

Handles

- Protrude 1.875"

Total Space Occupied

- Width: 28.46"
- Height: 50.855"
- Depth: 37.75"

	*Section Starting & Ending Points	Vertical Height Per section	Effective Depth For Each Section
Top	46.75" – 50.23"	3.25"	30.50"
	46.57" – 46.75"	.18"	29.50"
	31.00"- 46.57"	15.57"	30.50"
Center	19.00"-31.00"	12.00"	28.75"
	3.43" – 19.00"	15.57"	30.50"
	3.25" – 3.43"	.18"	29.50"
Bottom	0.00" – 3.25"	3.25"	30.50"

OD-50DDXC

50" H x 42" D (52 RU) Outdoor Enclosure



General

Weight

- 178 Lbs. assembled
- 218 Lbs. shipping weight

Doors

- 2, secured by three point locking system
- Locks via customer supplied padlocks
- Sealed with .875" aluminum filled gaskets

Material

- .125" Alumiflex™
- Finish: Painted cream
- RF properties: Non-ferrous

Vents

- 30 bottom louvers per door
- 12 top louvers – In top cover, under Alumishield™
- One removable filter panel per door
- 12 fixed filter pads in top cover

Handles

- Stainless steel, padlocking

Racking Specifications

Rails

- Two set standard (for additional rails see accessories)
- Alodine coated
- Holes tapped for 10-32 threads
- Each rail supported by three R-STRUTS™
- .125" Material (Alumiflex™)

Spacing

- 19" or 23" Racking available

Useable Height

- Usable racking height has been revised to only fit in the opening of the door jam which is cabinet height minus 3.75"
- Maximum: 46.25"
- Number of rack units per rail set: 26
- Total number RU's: 52

Useable Depth

- Maximum: 38.5" Minimum: 36.75"

Inside Clearance - Less Rails

Height

- 49.98"

Width

- 23.625"

Depth

- See racking specifications – Useable depth

Ratings

NEMA Class Types available

- NEMA 3R (Vented), NEMA 4 (closed loop-a/c) , NEMA 4X

Paint Tested

- 1000 Hour salt spray (textured)
- 1000 Hour immersion

Door Opening Clearance

Height

- 46"

Width

- 19.5"

Exterior Cabinet Dimensions

Main Body

- Height: 50.23"
- Width: 25.5"
- Depth: 42"

Alumishield™

- Width: 28.46"
- Hang down height: 1.75"
- Depth: 44.669"

Handles

- Protrude 1.875"

Total Space Occupied

- Width: 28.46"
- Height: 50.855"
- Depth: 45.75"

	*Section Starting & Ending Points	Vertical Height Per section	Effective Depth For Each Section
Top	46.75" – 50.23"	3.25"	38.50"
	46.57" – 46.75"	.18"	37.50"
	31.00"- 46.57"	15.57"	38.50"
Center	19.00"-31.00"	12.00"	36.75"
	3.43" – 19.00"	15.57"	38.50"
	3.25" – 3.43"	.18"	37.50"
Bottom	0.00" – 3.25"	3.25"	38.50"

OD-62DXC

62" H x 25" W x 25" D (33 RU) Outdoor Enclosure



General

Weight

- 140 Lbs. assembled
- 180 Lbs. shipping weight

Doors

- 2, secured by three point locking system
- Locks via customer supplied padlocks
- Sealed with .875" aluminum filled gaskets

Material

- .125" Alumiflex™
- Finish: Painted cream
- RF properties: Non-ferrous

Vents

- 30 bottom louvers per door
- 12 top louvers – In top cover, under Alumishield™
- One removable filter panel per door
- 12 fixed filter pads in top cover

Handles

- Stainless steel, padlocking

Racking Specifications

Rails

- One set standard (for additional rails see accessories)
- Alodine coated
- Holes tapped for 10-32 threads
- Each rail supported by three R-STRUTS™
- .125" Material (Alumiflex™)

Spacing

- 19" or 23" Racking available

Useable Height

- Usable racking height has been revised to only fit in the opening of the door jam which is cabinet height minus 3.75"
- Maximum: 58.25"
- Number of rack units per rail set: 33
- Total number RU's: 33

Useable Depth

- Maximum: 21.5" Minimum: 19.75"

Inside Clearance - Less Rails

Height

- 62.23"

Width

- 23.625"

Depth

- See racking specifications
- Useable depth

Ratings

NEMA Class Types available

- NEMA 3R (Vented), NEMA 4 (closed loop-a/c) , NEMA 4X

Paint Tested

- 1000 Hour salt spray (textured)
- 1000 Hour immersion

Door Opening Clearance

Height

- 58.25"

Width

- 19.5"

Exterior Cabinet Dimensions

Main Body

- Height: 62.48"
- Width: 25.5"
- Depth: 25"

Alumishield™

- Width: 28.46"
- Hang down height: 1.75"
- Depth: 27.67"

Handles

- Protrude 1.875"

Total Space Occupied

- Width: 28.46"
- Height: 63.105"
- Depth: 28.75"

	*Section Starting & Ending Points	Vertical Height Per section	Effective Depth For Each Section
Top	58.75" – 62.48"	3.25"	21.50"
	58.57" – 58.75"	.18"	20.50"
	37.00" – 58.57"	21.57	21.50"
Center	19.00"-31.00"	12.00"	19.75"
	3.43" – 25.00"	21.57	21.50"
	3.25" – 3.43"	.18"	20.50"
Bottom	0.00" – 3.25"	3.25"	21.50"

OD-62DDC

62" H x 25" W x 34" D (66 RU) Outdoor Enclosure

10



General

Weight

- 176 Lbs. assembled
- 216 Lbs. shipping weight

Doors

- 2, secured by three point locking system
- Locks via customer supplied padlocks
- Sealed with .875" aluminum filled gaskets

Material

- .125" Alumiflex™
- Finish: Painted cream
- RF properties: Non-ferrous

Vents

- 30 bottom louvers per door
- 12 top louvers – In top cover, under Alumishield™
- One removable filter panel per door
- 12 fixed filter pads in top cover

Handles

- Stainless steel, padlocking

Racking Specifications

Rails

- Two sets 19" Rails standard (for additional rails see accessories)
- Alodine coated
- Holes tapped for 10-32 threads
- Each rail supported by three R-STRUTS™
- .125" Material (Alumiflex™)

Spacing

- 19" or 23" Racking available

Useable Height

- Usable racking height has been revised to only fit in the opening of the door jam which is cabinet height minus 3.75"
- Maximum: 58.25"
- Number of rack units per rail set: 33
- Total number RU's: 66

Useable Depth

- Maximum: 30.5" Minimum: 28.75"

Inside Clearance - Less Rails

Height

- 62.23"

Width

- 23.625"

Depth

- See racking specifications – Useable depth

Ratings

NEMA Class Types available

- NEMA 3R (Vented), NEMA 4 (closed loop-a/c) , NEMA 4X

Paint Tested

- 1000 Hour salt spray (textured)
- 1000 Hour immersion

Door Opening Clearance

Height

- 58.25"

Width

- 19.5"

Exterior Cabinet Dimensions

Main Body

- Height: 62.48"
- Width: 25.5"
- Depth: 34"

Alumishield™

- Width: 28.46"
- Hang down height: 1.75"
- Depth: 36.67"

Handles

- Protrude 1.875"

Total Space Occupied

- Width: 28.46"
- Height: 63.105"
- Depth: 37.75"

	*Section Starting & Ending Points	Vertical Height Per section	Effective Depth For Each Section
Top	58.75" – 62.48"	3.25"	30.50"
	58.57" – 58.75"	.18"	29.50"
	37.00" – 58.57"	21.57	30.50"
Center	25.00" – 37.00"	12.00"	28.75"
	3.43" – 25.00"	21.57	30.50"
	3.25" – 3.43"	.18"	29.50"
Bottom	0.00" – 3.25"	3.25"	30.50"

OD-62DDXC

62" H x 42" D (66 RU) Outdoor Enclosure

11



General

Weight

- 210 Lbs. assembled
- 255 Lbs. shipping weight

Doors

- 2, secured by three point locking system
- Locks via customer supplied padlocks
- Sealed with .875" aluminum filled gaskets

Material

- .125" Alumiflex™
- Finish: Painted cream
- RF properties: Non-ferrous

Vents

- 30 bottom louvers per door
- 12 top louvers – In top cover, under Alumishield™
- One removable filter panel per door
- 12 fixed filter pads in top cover

Handles

- Stainless steel, padlocking

Racking Specifications

Rails

- Two set standard (for additional rails see accessories)
- Alodine coated
- Holes tapped for 10-32 threads
- Each rail supported by three R-STRUTS™
- .125" Material (Alumiflex™)

Spacing

- 19" or 23" Racking available

Useable Height

- Usable racking height has been revised to only fit in the opening of the door jam which is cabinet height minus 3.75"
- Maximum: 58.25"
- Number of rack units per rail set: 33
- Total number RU's: 66

Useable Depth

- Maximum: 30.5" Minimum: 28.75"

Inside Clearance - Less Rails

Height

- 62.23"

Width

- 23.625"

Depth

- See racking specifications
- Useable depth

Ratings

NEMA Class Types available

- NEMA 3R (Vented), NEMA 4 (closed loop-a/c) , NEMA 4X

Paint Tested

- 1000 Hour salt spray (textured)
- 1000 Hour immersion

Door Opening Clearance

Height

- 58.25"

Width

- 19.5"

Exterior Cabinet Dimensions

Main Body

- Height: 62.48"
- Width: 25.5"
- Depth: 42"

Alumishield™

- Hang down height: 1.75"
- Width: 28.46"
- Depth: 44.669"

Handles

- Protrude 1.875"

Total Space Occupied

- Height: 63.105"
- Width: 28.46"
- Depth: 45.75"

	*Section Starting & Ending Points	Vertical Height Per section	Effective Depth For Each Section
Top	58.75" – 62.48"	3.25"	38.50"
	58.57" – 58.75"	.18"	37.50"
	37.00" – 58.57"	21.57"	38.50"
Center	25.00" – 37.00"	12.00"	36.75"
	3.43" – 25.00"	21.57"	38.50"
	3.25" – 3.43"	.18"	37.50"
Bottom	0.00" – 3.25"	3.25"	38.50"

OD-78DXC

78" H x 25" D (42 RU) Outdoor Enclosure

12



General

Weight

- 168 Lbs. assembled
- 208 Lbs. shipping weight

Doors

- 2, secured by three point locking system
- Locks via customer supplied padlocks
- Sealed with .875" aluminum filled gaskets

Material

- .125" Alumiflex™
- Finish: Painted cream
- RF properties: Non-ferrous

Vents

- 30 bottom louvers per door
- 12 top louvers – In top cover-under Alumishield™
- One removable filter panel per door
- 12 fixed filter pads in top cover

Handles

- Stainless steel, padlocking

Racking Specifications

Rails

- One set standard (for additional rails see accessories)
- Alodine coated
- Holes tapped for 10-32 threads
- Each rail supported by three R-STRUTS™
- .125" Material (Alumiflex™)

Spacing

- 19" or 23" Racking available

Useable Height

- Usable racking height has been revised to only fit in the opening of the door jam which is cabinet height minus 3.75"
- Maximum: 74.25"
- Number of rack units per rail set: 42
- Total number RU's: 42

Useable Depth

- Maximum: 21.5" Minimum: 19.75"

Inside Clearance - Less Rails

Height

- 77.98"

Width

- 23.625"

Depth

- See racking specifications – Useable depth

Ratings

NEMA Class Types available

- NEMA 3R (Vented), NEMA 4 (closed loop-a/c) , NEMA 4X

Paint Tested

- 1000 Hour salt spray (textured)
- 1000 Hour immersion

Door Opening Clearance

Height

- 74"

Width

- 19.5"

Exterior Cabinet Dimensions

Main Body

- Height: 78.23"
- Width: 25.5"
- Depth: 25"

Alumishield™

- Hang down height: 1.75"
- Width: 28.46"
- Depth: 27.67"

Handles

- Protrude 1.875"

Total Space Occupied

- Height: 79.67"
- Width: 28.46"
- Depth: 28.75"

	*Section Starting & Ending Points	Vertical Height Per section	Effective Depth For Each Section
Top	74.75" – 78.23"	3.25"	21.50"
	74.57" – 74.75"	.18"	20.50"
	45.00" – 74.57"	15.57	21.50"
Center	33.00"-45.00"	7.94"	19.75"
	3.43" – 33.00"	15.57	21.50"
	3.25" – 3.43"	.18"	20.50"
Bottom	0.00" – 3.25"	3.25"	21.50"

OD-78DDC

78" H x 34" D (84 RU) Outdoor Enclosure

13



General

Weight

- 205 Lbs. assembled
- 260 Lbs. shipping weight

Doors

- 2, secured by three point locking system
- Locks via customer supplied padlocks
- Sealed with .875" aluminum filled gaskets

Material

- .125" Alumiflex™
- Finish: Painted cream
- RF properties: Non-ferrous

Vents

- 30 bottom louvers per door
- 12 top louvers – In top cover, under Alumishield™
- One removable filter panel per door
- 12 fixed filter pads in top cover

Handles

- Stainless steel, padlocking

Racking Specifications

Rails

- Two sets 19" Rail standard (for additional rails see accessories)
- Alodine coated
- Holes tapped for 10-32 threads
- Each rail supported by three R-STRUTS™
- .125" Material (Alumiflex™)

Spacing

- 19" or 23" Racking available

Useable Height

- Usable racking height has been revised to only fit in the opening of the door jam which is cabinet height minus 3.75"
- Maximum: 74.25"
- Number of rack units per rail set: 42
- Total number RU's: 84

Useable Depth

- Maximum: 30.5" Minimum: 28.75"

Inside Clearance - Less Rails

Height

- 77.98"

Width

- 23.625"

Depth

- See racking specifications
- Useable depth

Ratings

NEMA Class Types available

- NEMA 3R (Vented), NEMA 4 (closed loop-a/c) , NEMA 4X

Paint Tested

- 1000 Hour salt spray (textured)
- 1000 Hour immersion

Door Opening Clearance

Height

- 74"

Width

- 19.5"

Exterior Cabinet Dimensions

Main Body

- Height: 78.23"
- Width: 25.5"
- Depth: 34"

Alumishield™

- Hang down height: 1.75"
- Width: 28.46"
- Depth: 36.67"

Handles

- Protrude 1.875"

Total Space Occupied

- Height: 78.855"
- Width: 28.46"
- Depth: 37.75"

	*Section Starting & Ending Points	Vertical Height Per section	Effective Depth For Each Section
Top	74.75" – 78.23"	3.25"	30.50"
	74.57" – 74.75"	.18"	29.50"
	45.00" – 74.57"	29.57"	30.50"
Center	33.00" – 45.00"	12.00"	28.75"
	3.43" – 33.00"	29.57"	30.50"
	3.25" – 3.43"	.18"	29.50"
Bottom	0.00" – 3.25"	3.25"	30.50"

OD-78DDXC

78" H x 42" D (84 RU) Outdoor Enclosure



General

Weight

- 251 Lbs. assembled
- 291 Lbs. shipping weight

Doors

- 2, secured by three point locking system
- Locks via customer supplied padlocks
- Sealed with .875" aluminum filled gaskets

Material

- .125" Alumiflex™
- Finish: Painted cream
- RF properties: Non-ferrous

Vents

- 30 bottom louvers per door
- 12 top louvers – In top cover, under Alumishield™
- One removable filter panel per door
- 12 fixed filter pads in top cover

Handles

- Stainless steel, padlocking

Racking Specifications

Rails

- Two sets standard (for additional rails see accessories)
- Alodine coated
- Holes tapped for 10-32 threads
- Each rail supported by three R-STRUTS™
- .125" Material (Alumiflex™)

Spacing

- 19" or 23" Racking available

Useable Height

- Usable racking height has been revised to only fit in the opening of the door jam which is cabinet height minus 3.75"
- Maximum: 74.25"
- Number of rack units per rail set: 42
- Total number RU's: 84

Useable Depth

- Maximum: 38.5" Minimum: 36.75"

Inside Clearance - Less Rails

Height

- 77.98"

Width

- 23.625"

Depth

- See racking specifications – Useable depth

Ratings

NEMA Class Types available

- NEMA 3R (Vented), NEMA 4 (closed loop-a/c) , NEMA 4X

Paint Tested

- 1000 Hour salt spray (textured)
- 1000 Hour immersion

Door Opening Clearance

Height

- 74"

Width

- 19.5"

Exterior Cabinet Dimensions

Main Body

- Height: 78.23"
- Width: 25.5"
- Depth: 42"

Alumishield™

- Hang down height: 1.75"
- Width: 28.46"
- Depth: 44.669"

Handles

- Protrude 1.875"

Total Space Occupied

- Height: 78.855"
- Width: 28.46"
- Depth: 45.75"

	*Section Starting & Ending Points	Vertical Height Per section	Effective Depth For Each Section
Top	74.75" – 78.23"	3.25"	38.50"
	74.57" – 74.75"	.18"	37.50"
	45.00" – 74.57"	29.57"	38.50"
Center	33.00" – 45.00"	12.00"	36.75"
	3.43" – 33.00"	29.57"	38.50"
	3.25" – 3.43"	.18"	37.50"
Bottom	0.00" – 3.25"	3.25"	38.50"

LTEE-A

78" H x 25" W x 34" D (27 RU) (AC Unit Version) Wimax & LTE

General - Outdoor Enclosure with Front and Rear Door

Total Occupied Space

- Height: 78.75"
- Width: 37"
- Depth: 47.125"

Top Compartment:

- Height: 49.56"
- Height: Racking Rails 48.72"
- Rails tapped for 10-32 screws, (2) pass through holes per rail
- Front and Rear sets of Adjustable 19" or 23" racking.
- Total Racking Units: 27

Bottom Compartment:

- Height: 25.69"
- Depth: Maximum: 30.5" Minimum: 28.75"

Spool-Up Side Box

- Height 45"H
- Wide 26"W
- Deep 10"D
- Removable plywood back-plate
- 5 - 2" cable pass through openings;
- 4 for the primary compartment
- 1 for the battery cables.

Features

- Heavy Duty Lifting Hooks.
- Baked on White Textured Powder Coat Paint.
- 12" Copper ground bar on 14"risers with isolators.

Electrical

- Dual panel AC load center with 50 amp back-up generator plug. Interior convenience outlets and 220V supplied junction box for DC power system.

Cooling

- Air Conditioned Top Compartment (NEMA 4)
- 6000 BTU Air Conditioner, 220V programmable with 400 watts of heat
- Fan cooled Battery Compartment (NEMA 3R) using (2) 5", 48V, 110CFM fans and thermostat.
- HT-300 300 Watt Heater Strip



LTEE-D

78" H x 25" W x 34" D (27 RU) (Direct Air-Cooled Version) Wimax & LTE



General - Outdoor Enclosure with Front and Rear Door

Total Occupied Space

- Height: 78.75"
- Width: 37"
- Depth: 43.36"

Top Compartment:

- Height: 49.56"
- Height: Racking Rails 48.72"
- Rails tapped for 10-32 screws, (2) pass through holes per rail
- Front and Rear sets of Adjustable 19" or 23" racking.
- Total Racking Units: 27

Bottom Compartment:

- Height: 25.69"
- Depth: Maximum: 30.5" Minimum: 28.75"

Spool-Up Side Box

- Height 45"H
- Wide 26"W
- Deep 10"D
- Removable plywood back-plate
- 5 - 2" cable pass through openings;
- 4 for the primary compartment
- 1 for the battery cables.

Features

- Heavy Duty Lifting Hooks.
- Baked on White Textured Powder Coat Paint.
- 12" Copper ground bar on 14"risers with isolators.

Electrical

- Dual panel AC load center with 50 amp back-up generator plug. Interior convenience outlets and 220V supplied junction box for DC power system.

Cooling

- Dual compartment design with Direct Air Cooled (DAC) top compartment and fan cooled battery compartment.
- DAC cooling system driven by a 48V 10" diameter 600CFM fan, drawing air through a 2" thick MERV 16, GR-487 compliant salt fog filter.
- Battery compartment cooling driven by 2 48V 5" diameter 110CFM fans with manual thermostat.
- HT-300 300 Watt Heater Strip



R7-54DXCW-ACD

54" H x 25" D Wimax-LTE (29 RU) Outdoor Enclosure



Air Conditioner

Size

- 4000 BTU

Voltage

- 220 Volts AC

Dimensions

- 30.1" H x 12.27" W x 8.34" D

Security

- Programmable

Constructed

- Durable 16 gauge welded steel construction

NEMA

- Optional 4, 4X class & divisional

General

Weight

- 270 Lbs. assembled
- 305 Lbs. shipping weight

Doors

- 2, secured by three point locking system
- Locks via customer supplied padlocks
- Sealed with .875" aluminum filled gaskets

Material

- .125" Alumiflex™
- Finish: Flat aluminum
- RF properties: Non-ferrous

Handles

- Stainless steel, padlocking

Racking Specifications

Rails

- 2 standard (for additional rails see accessories)
- Alodine coated
- Holes tapped for 10-32 threads
- Each rail supported by two R-STRUTS™
- .125" Material (Alumiflex™)

Spacing

- 19" or 23" Racking available

Useable Height

- Height: 54"

Useable Depth

- Maximum: 21.5" Minimum: 19.75"

Spool Up Side Box

Dimensions

- 26" H x 22" W x 10" D

Security

- 2 Quarter turns Screwdriver Lock

Constructed

- Out of .125" Alumiflex™ Continuously welded on all seams

Finish

- Polished, unpainted aluminum

NEMA

- Weatherproof aluminum filled gasket seals top lid

Plate

- .5" plywood removable plate

Ground Bar

- .25" x 2" x 10"; 10 pairs 7/16" holes

Inside Clearance - Less Rails

Height

- 54"

Width

- 23.625"

Depth

- See racking specifications
- Useable depth

Ratings

NEMA Class Types available

- Class 250 Type 4X

Door Opening Clearance

Height

- 50.8125"

Width

- 19.5"

Exterior Cabinet Dimensions

Main Body

- Height: 54.125"
- Width: 45"
- Depth: 25"

Alumishield™

- Hang down height: 1.75"
- Width: 28"
- Depth: 27.5"

Handles

- Protrude 1.875"

Total Space Occupied

- Height: 54.5"
- Width: 38"
- Depth: 38"

	*Section Starting & Ending Points	Vertical Height Per section	Effective Depth For Each Section
Top	46.75" – 54.00"	3.25"	21.50"
	46.57" – 46.75"	.18"	20.50"
	31.00" – 46.57"	15.57"	21.50"
Center	19.00" – 31.00"	12.00"	19.75"
	3.43" – 19.00"	15.57"	21.50"
	3.25" – 3.43"	.18"	20.50"
Bottom	0.00" – 3.25"	3.25"	21.50"

R7-62DDCW-ACD

62" H x 34" D (51 RU) Outdoor Enclosure



Air Conditioner

Size

- 6000 BTU

Voltage

- 220 Volts AC

Dimensions

- 35.97" H x 15.94" W x 7.35" D

Security

- Programmable

Constructed

- Durable 16 gauge welded steel construction

NEMA

- Optional 4, 4X class & divisional

General

Weight

- 315 Lbs. assembled
- 375 Lbs. shipping weight

Doors

- 2, secured by three point locking system
- Locks via customer supplied padlocks
- Sealed with .875" aluminum filled gaskets

Material

- .125" Alumiflex™
- Finish: Flat aluminum
- RF properties: Non-ferrous

Handles

- Stainless steel, padlocking

Racking Specifications

Rails

- 4 standard, 2 half length (for additional rails see accessories)
- Alodine coated
- Holes tapped for 10-32 threads
- Each rail supported by two R-STRUTS™
- .125" Material (Alumiflex™)

Spacing

- 19" or 23" Racking available

Useable Height

- Height: 62"

Useable Depth

- Maximum: 30.5" Minimum: 28.75"

Spool Up Side Box

Dimensions

- 26" H x 22" W x 10" D

Security

- 2 Quarter turns Screwdriver Lock

Constructed

- Out of .125" Alumiflex™ Continuously welded on all seams

Finish

- Polished, unpainted aluminum

Plate

- .5" plywood removable plate

NEMA

- Weatherproof aluminum filled gasket seals top lid

Inside Clearance - Less Rails

Height

- 62"

Width

- 23.625"

Depth

- See racking specifications
- Useable depth

Ratings

NEMA Class Types available

- Class 250 Type 4X

Paint Tested

- 1000 Hour salt spray (textured)
- 1000 Hour immersion

Door Opening Clearance

Height

- 57.875"

Width

- 19.5"

Exterior Cabinet Dimensions

Main Body

- Height: 62.25"
- Width: 25.5"
- Depth: 34"

Alumishield™

- Hang down height: 1.75"
- Width: 28"
- Depth: 38.6875"

Handles

- Protrude 1.875"

Total Space Occupied

- Height: 62.5"
- Width: 38"
- Depth: 47"

	*Section Starting & Ending Points	Vertical Height Per section	Effective Depth For Each Section
Top	58.75" – 62.00"	3.25"	30.50"
	58.57" – 58.75"	.18"	29.50"
	37.00" – 58.57"	21.57"	30.50"
Center	25.00" – 37.00"	12.00"	28.75"
	3.43" – 25.00"	21.57"	30.50"
	3.25" – 3.43"	.18"	29.50"
Bottom	0.00" – 3.25"	3.25"	30.50"

20D-30DXC

30" H x 59" W x 25" D (30 RU) Outdoor Enclosure



General

Weight

- 173 Lbs. assembled
- 278 Lbs. shipping weight

Doors

- 4, secured by three point locking system
- Locks via customer supplied padlocks
- Sealed with .875" aluminum filled gaskets

Material

- .125" Alumiflex™
- Finish: Paint Cream
- RF properties: Non-ferrous

Vents

- 30 bottom louvers per door
- 20 top louvers – In top cover, under Alumishield™
- One removable filter panel per door
- 20 fixed filter pads in top cover

Handles

- Stainless steel, padlocking

Lifting Hooks

- 4, standard

Racking Specifications

Rails

- Two sets standard (for additional rails see accessories)
- Alodine coated
- Holes tapped for 10-32 threads
- Each rail supported by three R-STRUTS™
- .125" Material (Alumiflex™)

Spacing

- 19" or 23" Racking available

Useable Height

- 26.25"

Useable Depth

- Maximum: 21.5" Minimum: 19.75"

Inside Clearance - Less Rails

Height

- 30"

Width

- 26.6875" each side

Depth

- See racking specifications – Useable depth

Ratings

NEMA Class Types available

- Class 250 Type 4

Paint Tested

- 1000 Hour salt spray (textured)
- 1000 Hour immersion

Door Opening Clearance

Height

- 26.75"

Width

- 23.625"

Exterior Cabinet Dimensions

Main Body

- Height: 30.98"
- Width: 59"
- Depth: 25"

Alumishield™

- Hang down height: 1.75"
- Width: 62.875"
- Depth: 27.95"

Handles

- Protrude 1.875"

Total Space Occupied

- Height: 31.605"
- Width: 65"
- Depth: 28.75"

	*Section Starting & Ending Points	Vertical Height Per section	Effective Depth For Each Section
Top	26.75" – 30.98"	3.25"	21.50"
	26.57" – 26.75"	.18"	20.50"
	21.00" – 26.57"	5.57"	21.50"
Center	9.00" – 21.00"	12.00"	19.75"
	3.43" – 9.00"	5.57"	21.50"
	3.25" – 3.43"	.18"	20.50"
Bottom	0.00" – 3.25"	3.25"	21.50"

20D-30DDC

30" H x 59" W x 34" D (60 RU) Outdoor Enclosure



General

Weight

- 203 Lbs. assembled
- 308 Lbs. shipping weight

Doors

- 4, secured by three point locking system
- Locks via customer supplied padlocks
- Sealed with .875" aluminum filled gaskets

Material

- .125" Alumiflex™
- Finish: Paint Cream
- RF properties: Non-ferrous

Vents

- 30 bottom louvers per door
- 20 top louvers – In top cover-under Alumishield™
- One removable filter panel per door
- 20 fixed filter pads in top cover

Handles

- Stainless steel, padlocking

Lifting Hooks

- 6, standard

Racking Specifications

Rails

- Four sets standard (for additional rails see accessories)
- Alodine coated
- Holes tapped for 10-32 threads
- Each rail supported by three R-STRUTS™
- .125" Material (Alumiflex™)

Spacing

- 19" or 23" Racking available

Useable Height

- 26.25"

Useable Depth

- Maximum: 30.5" Minimum: 28.75"

Inside Clearance - Less Rails

Height

- 30"

Width

- 26.6875" each side

Depth

- See racking specifications – Useable depth

Ratings

NEMA Class Types available

- Class 250 Type 4

Paint Tested

- 1000 Hour salt spray (textured)
- 1000 Hour immersion

Door Opening Clearance

Height

- 26.75"

Width

- 23.625"

Exterior Cabinet Dimensions

Main Body

- Height: 30.98"
- Width: 59"
- Depth: 34"

Alumishield™

- Hang down height: 1.75"
- Width: 62.875"
- Depth: 36.5"

Handles

- Protrude 1.875"

Total Space Occupied

- Height: 31.605"
- Width: 65"
- Depth: 37.75"

	*Section Starting & Ending Points	Vertical Height Per section	Effective Depth For Each Section
Top	26.75" – 30.98"	3.25"	30.50"
	26.57" – 26.75"	.18"	29.50"
	21.00" – 26.57"	5.57"	30.50"
Center	9.00" – 21.00"	12.00"	28.75"
	3.43" – 9.00"	5.57"	30.50"
	3.25" – 3.43"	.18"	29.50"
Bottom	0.00" – 3.25"	3.25"	30.50"

20D-30DDXC

30" H x 59" W x 42" D (60 RU) Outdoor Enclosure



General

Weight

- 233 Lbs. assembled
- 388 Lbs. shipping weight

Doors

- 4, secured by three point locking system
- Locks via customer supplied padlocks
- Sealed with .875" aluminum filled gaskets

Material

- .125" Alumiflex™
- Finish: Painted cream
- RF properties: Non-ferrous

Vents

- 30 bottom louvers per door
- 20 top louvers – In top cover, under Alumishield™
- One removable filter panel per door
- 20 fixed bug screens in top cover

Handles

- Stainless steel, padlocking

Lifting Hooks

- 8, standard

Racking Specifications

Rails

- Four sets standard (for additional rails see accessories)
- Alodine coated
- Holes tapped for 10-32 threads
- Each rail supported by three R-STRUTS™
- .125" Material (Alumiflex™)

Spacing

- 19" or 23" Racking available

Useable Height

- 26.25"

Useable Depth

- Maximum: 30.5" Minimum: 28.75"

Inside Clearance - Less Rails

Height

- 30"

Width

- 26.6875" each side

Depth

- See racking specifications
- Useable depth

Ratings

NEMA Class Types available

- Class 250 Type 4X

Paint Tested

- 1000 Hour salt spray (textured)
- 1000 Hour immersion

Door Opening Clearance

Height

- 26.75"

Width

- 23.625"

Exterior Cabinet Dimensions

Main Body

- Height: 30.98"
- Width: 59"
- Depth: 42"

Alumishield™

- Hang down height: 1.75"
- Width: 62.875"
- Depth: 44.5"

Handles

- Protrude 1.875"

Total Space Occupied

- Height: 31.605"
- Width: 65"
- Depth: 45.75"

	*Section Starting & Ending Points	Vertical Height Per section	Effective Depth For Each Section
Top	26.75" – 30.98"	3.25"	30.50"
	26.57" – 26.75"	.18"	29.50"
	21.00" – 26.57"	5.57"	30.50"
Center	9.00" – 21.00"	12.00"	28.75"
	3.43" – 9.00"	5.57"	30.50"
	3.25" – 3.43"	.18"	29.50"
Bottom	0.00" – 3.25"	3.25"	30.50"

20D-50DXC

50" H x 59" W x 25" D (52 RU) Outdoor Enclosure



General

Weight

- 235 Lbs. assembled
- 340 Lbs. shipping weight

Doors

- 4, secured by three point locking system
- Locks via customer supplied padlocks
- Sealed with .875" aluminum filled gaskets

Material

- .125" Alumiflex™
- Finish: Painted cream
- RF properties: Non-ferrous

Vents

- 30 bottom louvers per door
- 20 top louvers – In top cover, under Alumishield™
- One removable filter panel per door
- 20 fixed filter pads in top cover

Handles

- Stainless steel, padlocking

Lifting Hooks

- 4, standard

Racking Specifications

Rails

- Two sets standard (for additional rails see accessories)
- Alodine coated
- Holes tapped for 10-32 threads
- Each rail supported by three R-STRUTS™
- .125" Material (Alumiflex™)

Spacing

- 19" or 23" Racking available

Useable Height

- 50"

Useable Depth

- Maximum: 20.25" Minimum: 19.75"

Inside Clearance - Less Rails

Height

- 50"

Width

- 26.6875" each side

Depth

- See racking specifications
- Useable depth

Ratings

NEMA Class Types available

- Class 250 Type 4

Paint Tested

- 1000 Hour salt spray (textured)
- 1000 Hour immersion

Door Opening Clearance

Height

- 46"

Width

- 23.625"

Exterior Cabinet Dimensions

Main Body

- Height: 50.23"
- Width: 59"
- Depth: 25"

Alumishield™

- Hang down height: 1.75"
- Width: 62.875"
- Depth: 29.5"

Handles

- Protrude 1.875"

Total Space Occupied

- Width: 65"
- Height: 50.855"
- Depth: 28.75"

	*Section Starting & Ending Points	Vertical Height Per section	Effective Depth For Each Section
Top	46.75" – 50.23"	3.25"	21.50"
	46.57" – 46.75"	.18"	20.50"
	31.00" - 46.57"	15.57"	21.50"
Center	19.00"-31.00"	12.00"	19.75"
	3.43" – 19.00"	15.57"	21.50"
	3.25" – 3.43"	.18"	20.50"
Bottom	0.00" – 3.25"	3.25"	21.50"

20D-50DDC

50" H x 59" W x 34" D (104 RU) Outdoor Enclosure



General

Weight

- 283 Lbs. assembled
- 388 Lbs. shipping weight

Doors

- 4, secured by three point locking system
- Locks via customer supplied padlocks
- Sealed with .875" aluminum filled gaskets

Material

- .125" Alumiflex™
- Finish: Painted cream
- RF properties: Non-ferrous

Vents

- 30 bottom louvers per door
- 24 top louvers – In top cover, under Alumishield™
- One removable filter panel per door
- 24 fixed bug screens in top cover

Handles

- Stainless steel, padlocking

Lifting Hooks

- 6, standard

Racking Specifications

Rails

- Four sets standard (for additional rails see accessories)
- Alodine coated
- Holes tapped for 10-32 threads
- Each rail supported by three R-STRUTS™
- .125" Material (Alumiflex™)

Spacing

- 19" or 23" Racking available

Useable Height

- 50"

Useable Depth

- Maximum: 29.25" Minimum: 28.75"

Inside Clearance - Less Rails

Height

- 50"

Width

- 27.96" each side

Depth

- See racking specifications – Useable depth

Ratings

NEMA Class Types available

- Class 250 Type 4

Paint Tested

- 1000 Hour salt spray (textured)
- 1000 Hour immersion

Door Opening Clearance

Height

- 46"

Width

- 23.625"

Exterior Cabinet Dimensions

Main Body

- Height: 50.23"
- Width: 59"
- Depth: 34"

Alumishield™

- Hang down height: 1.75"
- Width: 62.875"
- Depth: 36.5"

Handles

- Protrude 1.875"

Total Space Occupied

- Height: 50.855"
- Width: 62.875"
- Depth: 36.5"

	*Section Starting & Ending Points	Vertical Height Per section	Effective Depth For Each Section
Top	46.75" – 50.23"	3.25"	30.50"
	46.57" – 46.75"	.18"	29.50"
	31.00" - 46.57"	15.57"	30.50"
Center	19.00"-31.00"	12.00"	28.75"
	3.43" – 19.00"	15.57"	30.50"
	3.25" – 3.43"	.18"	29.50"
Bottom	0.00" – 3.25"	3.25"	30.50"

20D-50DDC-POP2-1

62" H x 59" W x 34" D (104 RU) Outdoor Enclosure



POP2-1 Enclosures Come With:

- LC-100 100 Amp Main Load Center w/ (4) 4-Square Outlets, (1) 220V Outlets
- 2 Fluorescent Lights
- Lifting Hooks
- Door Windlocks
- Door Alarms
- 4" C-Channel Feet for Mounting
- 2 - 6000 BTU Air Conditioner 220 Volts with 800 Watts Total Fan Heaters (12K Total BTU)
- Spool-Up Side Box – 26"H X 22"W X 10"D

General

Weight

- 500 Lbs. assembled
- 605 Lbs. shipping weight

Doors

- 4, secured by three point locking system
- Locks via customer supplied padlocks
- Sealed with .875" aluminum filled gaskets

Material

- .125" Alumiflex™
- Finish: Painted cream
- RF properties: Non-ferrous

Vents

- 30 bottom louvers per door
- 12 top louvers – In top cover-under Alumishield™
- One removable filter panel per door
- 12 fixed bug screens in top cover

Handles

- Stainless steel, padlocking

Lifting Hooks

- 6, standard

Racking Specifications

Rails

- Four sets standard (for additional rails see accessories)
- Alodine coated
- Holes tapped for 10-32 threads
- Each rail supported by three R-STRUTS™
- .125" Material (Alumiflex™)

Spacing

- 19" or 23" Racking available

Useable Height

- 50"

Useable Depth

- Maximum: 29.25" Minimum: 28.75"

Inside Clearance - Less Rails

Height

- 50"

Width

- 27.96" each side

Depth

- See racking specifications – Useable depth

Ratings

NEMA Class Types available

- Class 250 Type 4X

Paint Tested

- 1000 Hour salt spray (textured)
- 1000 Hour immersion

Door Opening Clearance

Height

- 46"

Width

- 23.625"

Exterior Cabinet Dimensions

Main Body

- Height: 50.23"
- Width: 59"
- Depth: 34"

Alumishield™

- Hang down height: 1.75"
- Width: 62.875"
- Depth: 36.5"

Handles

- Protrude 1.875"

Total Space Occupied

- Total Height: 68.46"
- Cabinet Height: 50.855"
- Battery Box: 17.605"
- Width: 72.875"
- Depth: 44"

	*Section Starting & Ending Points	Vertical Height Per section	Effective Depth For Each Section
Top	46.75" – 50.23"	3.25"	30.50"
	46.57" – 46.75"	.18"	29.50"
	31.00" - 46.57"	15.57"	30.50"
Center	19.00"-31.00"	12.00"	28.75"
	3.43" – 19.00"	15.57"	30.50"
	3.25" – 3.43"	.18"	29.50"
Bottom	0.00" – 3.25"	3.25"	30.50"

20D-50DDXC

50" H x 59" W x 42" D (104 RU) Outdoor Enclosure



General

Weight

- 328 Lbs. assembled
- 432 Lbs. shipping weight

Doors

- 4, secured by three point locking system
- Locks via customer supplied padlocks
- Sealed with .875" aluminum filled gaskets

Material

- .125" Alumiflex™
- Finish: Painted cream
- RF properties: Non-ferrous

Vents

- 12 bottom louvers per door
- 24 top louvers – In top cover-under Alumishield™
- One removable filter panel per door
- 24 fixed bug screens in top cover

Handles

- Stainless steel, padlocking

Lifting Hooks

- 8, standard

Racking Specifications

Rails

- Four sets standard (for additional rails see accessories)
- Alodine coated
- Holes tapped for 10-32 threads
- Each rail supported by three R-STRUTS™
- .125" Material (Alumiflex™)

Spacing

- 19" or 23" Racking available

Useable Height

- 50"

Useable Depth

- Maximum: 37.25" Minimum: 36.75"

Inside Clearance - Less Rails

Height

- 50"

Width

- 27.96" each side

Depth

- See racking specifications
- Useable depth

Ratings

NEMA Class Types available

- Class 250 Type 4

Paint Tested

- 1000 Hour salt spray (textured)
- 1000 Hour immersion

Door Opening Clearance

Height

- 46"

Width

- 23.625"

Exterior Cabinet Dimensions

Main Body

- Height: 50.23"
- Width: 59"
- Depth: 42"

Alumishield™

- Hang down height: 1.75"
- Width: 62.875"
- Depth: 45.5"

Handles

- Protrude 1.875"

Total Space Occupied

- Height: 50.75"
- Width: 62.875"
- Depth: 43.875"

	*Section Starting & Ending Points	Vertical Height Per section	Effective Depth For Each Section
Top	46.75" – 50.23"	3.25"	30.50"
	46.57" – 46.75"	.18"	29.50"
	31.00"- 46.57"	15.57"	30.50"
Center	19.00"-31.00"	12.00"	28.75"
	3.43" – 19.00"	15.57"	30.50"
	3.25" – 3.43"	.18"	29.50"
Bottom	0.00" – 3.25"	3.25"	30.50"

20D-62DXC

62" H x 59" W x 25" D (66 RU) Outdoor Enclosure



General

Weight

- 271 Lbs. assembled
- 376 Lbs. shipping weight

Doors

- 4, secured by three point locking system
- Locks via customer supplied padlocks
- Sealed with .875" aluminum filled gaskets

Material

- .125" Alumiflex™
- Finish: Painted cream
- RF properties: Non-ferrous

Vents

- 30 bottom louvers per door
- 24 top louvers – In top cover-under Alumishield™
- One removable filter panel per door
- 24 fixed bug screens in top cover

Handles

- Stainless steel, padlocking

Lifting Hooks

- 4, standard

Racking Specifications

Rails

- Two sets standard (for additional rails see accessories)
- Alodine coated
- Holes tapped for 10-32 threads
- Each rail supported by three R-STRUTS™
- .125" Material (Alumiflex™)

Spacing

- 19" or 23" Racking available

Useable Height

- 62"

Useable Depth

- Maximum: 20.25" Minimum: 19.75"

Inside Clearance - Less Rails

Height

- 62"

Width

- 27.96" each side

Depth

- See racking specifications – Useable depth

Ratings

NEMA Class Types available

- Class 250 Type 4

Paint Tested

- 1000 Hour salt spray (textured)
- 1000 Hour immersion

Door Opening Clearance

Height

- 58.25"

Width

- 23.625"

Exterior Cabinet Dimensions

Main Body

- Height: 62.48"
- Width: 59"
- Depth: 25"

Alumishield™

- Hang down height: 1.75"
- Width: 62.875"
- Depth: 29.5"

Handles

- Protrude 1.875"

Total Space Occupied

- Height: 63.105"
- Width: 62.875"
- Depth: 28.25"

	*Section Starting & Ending Points	Vertical Height Per section	Effective Depth For Each Section
Top	58.75" – 62.48"	3.25"	21.50"
	58.57" – 58.75"	.18"	20.50"
	37.00" – 58.57"	21.57	21.50"
Center	19.00"-31.00"	12.00"	19.75"
	3.43" – 25.00"	21.57	21.50"
	3.25" – 3.43"	.18"	20.50"
Bottom	0.00" – 3.25"	3.25"	21.50"

20D-62DDC

62" H x 59" W x 34" D (132 RU) Outdoor Enclosure



General

Weight

- 321 Lbs. assembled
- 426 Lbs. shipping weight

Doors

- 4, secured by three point locking system
- Locks via customer supplied padlocks
- Sealed with .875" aluminum filled gaskets

Material

- .125" Alumiflex™
- Finish: Painted cream
- RF properties: Non-ferrous

Vents

- 30 bottom louvers per door
- 24 top louvers – In top cover-under Alumishield™
- One removable filter panel per door
- 24 fixed bug screens in top cover

Handles

- Stainless steel, padlocking

Lifting Hooks

- 6, standard

Racking Specifications

Rails

- Four sets standard (for additional rails see accessories)
- Alodine coated
- Holes tapped for 10-32 threads
- Each rail supported by three R-STRUTS™
- .125" Material (Alumiflex™)

Spacing

- 19" or 23" Racking available

Useable Height

- 57.75"

Useable Depth

- Maximum: 30.5" Minimum: 28.75"

Inside Clearance - Less Rails

Height

- 62"

Width

- 23.625"

Depth

- See racking specifications – Useable depth

Ratings

NEMA Class Types available

- Class 250 Type 4

Paint Tested

- 1000 Hour salt spray (textured)
- 1000 Hour immersion

Door Opening Clearance

Height

- 58.25"

Width

- 23.625"

Exterior Cabinet Dimensions

Main Body

- Height: 62.48"
- Width: 59"
- Depth: 34"

Alumishield™

- Hang down height: 1.75"
- Width: 62.875"
- Depth: 36.6875"

Handles

- Protrude 1.875"

Total Space Occupied

- Width: 63.105"
- Height: 65"
- Depth: 37.75"

	*Section Starting & Ending Points	Vertical Height Per section	Effective Depth For Each Section
Top	58.75" – 62.48"	3.25"	30.50"
	58.57" – 58.75"	.18"	29.50"
	37.00" – 58.57"	21.57	30.50"
Center	25.00" – 37.00"	12.00"	28.75"
	3.43" – 25.00"	21.57	30.50"
	3.25" – 3.43"	.18"	29.50"
Bottom	0.00" – 3.25"	3.25"	30.50"

2OD-62DDXC

62" H x 59" W x 42" D (132 RU) Outdoor Enclosure



General

Weight

- 364 Lbs. assembled
- 469 Lbs. shipping weight

Doors

- 4, secured by three point locking system
- Locks via customer supplied padlocks
- Sealed with .875" aluminum filled gaskets

Material

- .125" Alumiflex™
- Finish: Painted cream
- RF properties: Non-ferrous

Vents

- 30 bottom louvers per door
- 24 top louvers – In top cover-under Alumishield™
- One removable filter panel per door
- 24 fixed bug screens in top cover

Handles

- Stainless steel, padlocking

Lifting Hooks

- 8, standard

Racking Specifications

Rails

- Four sets standard (for additional rails see accessories)
- Alodine coated
- Holes tapped for 10-32 threads
- Each rail supported by three R-STRUTS™
- .125" Material (Alumiflex™)

Spacing

- 19" or 23" Racking available

Useable Height

- 62"

Useable Depth

- Maximum: 37.25" Minimum: 36.75"

Inside Clearance - Less Rails

Height

- 62"

Width

- 27.96" each side

Depth

- See racking specifications
- Useable depth

Ratings

NEMA Class Types available

- Class 250 Type 4

Paint Tested

- 1000 Hour salt spray (textured)
- 1000 Hour immersion

Door Opening Clearance

Height

- 58.25"

Width

- 23.625"

Exterior Cabinet Dimensions

Main Body

- Height: 62.48"
- Width: 59"
- Depth: 42"

Alumishield™

- Hang down height: 1.75"
- Width: 62.875"
- Depth: 45.5"

Handles

- Protrude 1.875"

Total Space Occupied

- Height: 63.105"
- Width: 62.875"
- Depth: 43.875"

	*Section Starting & Ending Points	Vertical Height Per section	Effective Depth For Each Section
Top	58.75" – 62.48"	3.25"	38.50"
	58.57" – 58.75"	.18"	37.50"
	37.00" – 58.57"	21.57"	38.50"
Center	25.00" – 37.00"	12.00"	36.75"
	3.43" – 25.00"	21.57"	38.50"
	3.25" – 3.43"	.18"	37.50"
Bottom	0.00" – 3.25"	3.25"	38.50"

20D-62DDXC-A1

78" H x 59" W x 42" D (132 RU) Outdoor Enclosure



General

Weight

- 440 Lbs. assembled
- 545 Lbs. shipping weight

Doors

- 4, secured by three point locking system
- Locks via customer supplied padlocks
- Sealed with .875" aluminum filled gaskets

Material

- .125" Alumiflex™
- Finish: Painted cream
- RF properties: Non-ferrous

Vents

- 30 bottom louvers per door
- 24 top louvers – In top cover, under Alumishield™
- One removable filter panel per door
- 24 fixed bug screens in top cover

Handles

- Stainless steel, padlocking

Lifting Hooks

- 8, standard

Racking Specifications

Rails

- Four sets standard (for additional rails see accessories)
- Alodine coated
- Holes tapped for 10-32 threads
- Each rail supported by three R-STRUTS™
- .125" Material (Alumiflex™)

Spacing

- 19" or 23" Racking available

Useable Height

- 62"

Useable Depth

- Maximum: 37.25" Minimum: 36.75"

Inside Clearance - Less Rails

Height

- 62"

Width

- 27.96" each side

Depth

- See racking specifications
- Useable depth

Ratings

NEMA Class Types available

- Class 250 Type 4

Paint Tested

- 1000 Hour salt spray (textured)
- 1000 Hour immersion

Door Opening Clearance

Height

- 58.25"

Width

- 23.625"

Exterior Cabinet Dimensions

Main Body

- Total Height: 78.25"
- Cabinet Height: 62.48"
- Battery Box: 16"
- Width: 59"
- Depth: 42"

Alumishield™

- Hang down height: 1.75"
- Width: 62.875"
- Depth: 45.5"

Handles

- Protrude 1.875"

Total Space Occupied

- Height: 63.1875"
- Width: 62.875"
- Depth: 43.875"

	*Section Starting & Ending Points	Vertical Height Per section	Effective Depth For Each Section
Top	74.75" – 78.00"	3.25"	38.50"
	74.57" – 74.75"	.18"	37.50"
	45.00" – 74.57"	29.57"	38.50"
Center	33.00" – 45.00"	12.00"	36.75"
	3.43" – 33.00"	29.57"	38.50"
	3.25" – 3.43"	.18"	37.50"
Bottom	0.00" – 3.25"	3.25"	38.50"

20D-78DXC

78" H x 59" W x 25" D (84 RU) Outdoor Enclosure



General

Weight

- 319 Lbs. assembled
- 424 Lbs. shipping weight

Doors

- 4, secured by three point locking system
- Locks via customer supplied padlocks
- Sealed with .875" aluminum filled gaskets

Material

- .125" Alumiflex™
- Finish: Painted cream
- RF properties: Non-ferrous

Vents

- 30 bottom louvers per door
- 20 top louvers – In top cover-under Alumishield™
- One removable filter panel per door
- 20 fixed bug screens in top cover

Handles

- Stainless steel, padlocking

Lifting Hooks

- 4, standard

Racking Specifications

Rails

- Two sets standard (for additional rails see accessories)
- Alodine coated
- Holes tapped for 10-32 threads
- Each rail supported by three R-STRUTS™
- .125" Material (Alumiflex™)

Spacing

- 19" or 23" Racking available

Useable Height

- 73.5"

Useable Depth

- Maximum: 21.5" Minimum: 19.75"

Inside Clearance - Less Rails

Height

- 62"

Width

- 26.6875" each side

Depth

- See racking specifications – Useable depth

Ratings

NEMA Class Types available

- Class 250 Type 4

Paint Tested

- 1000 Hour salt spray (textured)
- 1000 Hour immersion

Door Opening Clearance

Height

- 74"

Width

- 23.625"

Exterior Cabinet Dimensions

Main Body

- Height: 78"
- Width: 59"
- Depth: 25"

Alumishield™

- Hang down height: 1.75"
- Width: 62.875"
- Depth: 29.5"

Handles

- Protrude 1.875"

Total Space Occupied

- Height: 78.855"
- Width: 65"
- Depth: 28.75"



	*Section Starting & Ending Points	Vertical Height Per section	Effective Depth For Each Section
Top	74.75" – 78.23"	3.25"	21.50"
	74.57" – 74.75"	.18"	20.50"
	45.00" – 74.57"	15.57	21.50"
Center	33.00"–45.00"	7.94"	19.75"
	3.43" – 33.00"	15.57	21.50"
	3.25" – 3.43"	.18"	20.50"
Bottom	0.00" – 3.25"	3.25"	21.50"

20D-78DDC

78" H x 59" W x 42" D (168 RU) Outdoor Enclosure



General

Weight

- 381 Lbs. assembled
- 486 Lbs. shipping weight

Doors

- 4, secured by three point locking system
- Locks via customer supplied padlocks
- Sealed with .875" aluminum filled gaskets

Material

- .125" Alumiflex™
- Finish: Painted cream
- RF properties: Non-ferrous

Vents

- 30 bottom louvers per door
- 24 top louvers – In top cover, under Alumishield™
- One removable filter panel per door
- 24 fixed bug screens in top cover

Handles

- Stainless steel, padlocking

Lifting Hooks

- 6, standard

Racking Specifications

Rails

- Four sets standard (for additional rails see accessories)
- Alodine coated
- Holes tapped for 10-32 threads
- Each rail supported by three R-STRUTS™
- .125" Material (Alumiflex™)

Spacing

- 19" or 23" Racking available

Useable Height

- 62"

Useable Depth

- Maximum: 30.5" Minimum: 28.75"

Inside Clearance - Less Rails

Height

- 78"

Width

- 26.6875" each side

Depth

- See racking specifications
- Useable depth

Ratings

NEMA Class Types available

- Class 250 Type 4

Paint Tested

- 1000 Hour salt spray (textured)
- 1000 Hour immersion

Door Opening Clearance

Height

- 74"

Width

- 23.625"

Exterior Cabinet Dimensions

Main Body

- Height: 78.25"
- Width: 59"
- Depth: 34"

Alumishield™

- Hang down height: 1.75"
- Width: 62.875"
- Depth: 36.5"

Handles

- Protrude 1.875"

Total Space Occupied

- Height: 78.855"
- Width: 65"
- Depth: 37.75"

	*Section Starting & Ending Points	Vertical Height Per section	Effective Depth For Each Section
Top	74.75" – 78.23"	3.25"	30.50"
	74.57" – 74.75"	.18"	29.50"
	45.00" – 74.57"	29.57"	30.50"
Center	33.00" – 45.00"	12.00"	28.75"
	3.43" – 33.00"	29.57"	30.50"
	3.25" – 3.43"	.18"	29.50"
Bottom	0.00" – 3.25"	3.25"	30.50"

2OD-78DDXC

78" H x 59" W x 42" D (168 RU) Outdoor Enclosure



General

Weight

- 446 Lbs. assembled
- 551 Lbs. shipping weight

Doors

- 4, secured by three point locking system
- Locks via customer supplied padlocks
- Sealed with .875" aluminum filled gaskets

Material

- .125" Alumiflex™
- Finish: Painted cream
- RF properties: Non-ferrous

Vents

- 30 bottom louvers per door
- 24 top louvers – In top cover, under Alumishield™
- One removable filter panel per door
- 24 fixed bug screens in top cover

Handles

- Stainless steel, padlocking

Lifting Hooks

- 8, standard

Racking Specifications

Rails

- Four sets standard (for additional rails see accessories)
- Alodine coated
- Holes tapped for 10-32 threads
- Each rail supported by three R-STRUTS™
- .125" Material (Alumiflex™)

Spacing

- 19" or 23" Racking available

Useable Height

- 62"

Useable Depth

- Maximum: 38.5" Minimum: 36.75"

Inside Clearance - Less Rails

Height

- 62"

Width

- 27.96" each side

Depth

- See racking specifications – Useable depth

Ratings

NEMA Class Types available

- Class 250 Type 4

Paint Tested

- 1000 Hour salt spray (textured)
- 1000 Hour immersion

Door Opening Clearance

Height

- 74"

Width

- 23.625"

Exterior Cabinet Dimensions

Main Body

- Height: 78.23"
- Width: 62.875"
- Depth: 42"

Alumishield™

- Hang down height: 1.75"
- Width: 45.75"
- Depth: 45.5"

Handles

- Protrude 1.875"

Total Space Occupied

- Height: 78.855"
- Width: 62.875"
- Depth: 45.75"

	*Section Starting & Ending Points	Vertical Height Per section	Effective Depth For Each Section
Top	74.75" – 78.23"	3.25"	38.50"
	74.57" – 74.75"	.18"	37.50"
	45.00" – 74.57"	29.57"	38.50"
Center	33.00" – 45.00"	12.00"	36.75"
	3.43" – 33.00"	29.57"	38.50"
	3.25" – 3.43"	.18"	37.50"
Bottom	0.00" – 3.25"	3.25"	38.50"

3OD-30DXC

30" H x 88.5" W x 25" D (45 RU) Outdoor Enclosure



General

Weight

- 259 Lbs. assembled
- 419 Lbs. shipping weight

Doors

- 6, secured by three point locking system
- Locks via customer supplied padlocks
- Sealed with .875" aluminum filled gaskets

Material

- .125" Alumiflex™
- Finish: Painted cream
- RF properties: Non-ferrous

Vents

- 30 bottom louvers per door
- 26 top louvers – In top cover, under Alumishield™
- One removable filter panel per door
- 26 fixed filter pads in top cover

Handles

- Stainless steel, padlocking

Lifting Hooks

- 4, standard

Racking Specifications

Rails

- Three sets standard (for additional rails see accessories)
- Alodine coated
- Holes tapped for 10-32 threads
- Each rail supported by two R-STRUTS™
- .125" Material (Alumiflex™)

Spacing

- 19" or 23" Racking available

Useable Height

- 26.25"

Useable Depth

- Maximum: 21.5" Minimum: 19.75"

Inside Clearance - Less Rails

Height

- 30"

Width

- 26.6875" each compartment

Depth

- See racking specifications
- Useable depth

Ratings

NEMA Class Types available

- Class 250 Type 4X

Paint Tested

- 1000 Hour salt spray (textured)
- 1000 Hour immersion

Door Opening Clearance

Height

- 26.75"

Width

- 23.625"

Exterior Cabinet Dimensions

Main Body

- Height: 30.98"
- Width: 88.5"
- Depth: 25"

Alumishield™

- Hang down height: 1.75"
- Width: 93.5"
- Depth: 29.5"

Handles

- Protrude 1.875"

Total Space Occupied

- Height: 31.605"
- Width: 94.5"
- Depth: 28.75"

	*Section Starting & Ending Points	Vertical Height Per section	Effective Depth For Each Section
Top	26.75" – 30.98"	3.25"	21.50"
	26.57" – 26.75"	.18"	20.50"
	21.00" – 26.57"	5.57"	21.50"
Center	9.00" – 21.00"	12.00"	19.75"
	3.43" – 9.00"	5.57"	21.50"
	3.25" – 3.43"	.18"	20.50"
Bottom	0.00" – 3.25"	3.25"	21.50"

3OD-30DDC

30" H x 88.5" W x 34" D (90 RU) Outdoor Enclosure



General

Weight

- 304 Lbs. assembled
- 464 Lbs. shipping weight

Doors

- 6, secured by three point locking system
- Locks via customer supplied padlocks
- Sealed with .875" aluminum filled gaskets

Material

- .125" Alumiflex™
- Finish: Painted cream
- RF properties: Non-ferrous

Vents

- 30 bottom louvers per door
- 26 top louvers – In top cover, under Alumishield™
- One removable filter panel per door
- 26 fixed filter pads in top cover

Handles

- Stainless steel, padlocking

Lifting Hooks

- 6, standard

Racking Specifications

Rails

- Six sets standard (for additional rails see accessories)
- Alodine coated
- Holes tapped for 10-32 threads
- Each rail supported by two R-STRUTS™
- .125" Material (Alumiflex™)

Spacing

- 19" or 23" Racking available

Useable Height

- 26.25"

Useable Depth

- Maximum: 30.5" Minimum: 28.75"

Inside Clearance - Less Rails

Height

- 30"

Width

- 26.6875" each compartment

Depth

- See racking specifications
- Useable depth

Ratings

NEMA Class Types available

- Class 250 Type 4X

Paint Tested

- 1000 Hour salt spray (textured)
- 1000 Hour immersion

Door Opening Clearance

Height

- 26.75"

Width

- 23.625"

Exterior Cabinet Dimensions

Main Body

- Height: 30.98"
- Width: 88.5"
- Depth: 34"

Alumishield™

- Hang down height: 1.75"
- Width: 93.5"
- Depth: 36.5"

Handles

- Protrude 1.875"

Total Space Occupied

- Height: 31.605"
- Width: 94.5"
- Depth: 37.75"

	*Section Starting & Ending Points	Vertical Height Per section	Effective Depth For Each Section
Top	26.75" – 30.98"	3.25"	30.50"
	26.57" – 26.75"	.18"	29.50"
	21.00" – 26.57"	5.57"	30.50"
Center	9.00" – 21.00"	12.00"	28.75"
	3.43" – 9.00"	5.57"	30.50"
	3.25" – 3.43"	.18"	29.50"
Bottom	0.00" – 3.25"	3.25"	30.50"

30D-30DDXC

30" H x 88.5" W x 42" D (90 RU) Outdoor Enclosure



General

Weight

- 350 Lbs. assembled
- 510 Lbs. shipping weight

Doors

- 2, secured by three point locking system
- Locks via customer supplied padlocks
- Sealed with .875" aluminum filled gaskets

Material

- .125" Alumiflex™
- Finish: Painted cream
- RF properties: Non-ferrous

Vents

- 30 bottom louvers per door
- 26 top louvers – In top cover, under Alumishield™
- One removable filter panel per door
- 12 fixed filter pads in top cover

Handles

- Stainless steel, padlocking

Lifting Hooks

- 8, standard

Racking Specifications

Rails

- Six sets standard (for additional rails see accessories)
- Alodine coated
- Holes tapped for 10-32 threads
- Each rail supported by two R-STRUTS™
- .125" Material (Alumiflex™)

Spacing

- 19" or 23" Racking available

Useable Height

- 26.8125"

Useable Depth

- Maximum: 38.5" Minimum: 36.75"

Inside Clearance - Less Rails

Height

- 30"

Width

- 26.6875" each compartment

Depth

- See racking specifications
- Useable depth

Ratings

NEMA Class Types available

- Class 250 Type 4X

Paint Tested

- 1000 Hour salt spray (textured)
- 1000 Hour immersion

Door Opening Clearance

Height

- 26.75"

Width

- 23.625"

Exterior Cabinet Dimensions

Main Body

- Height: 30.98"
- Width: 88"
- Depth: 42.25"

Alumishield™

- Width: 93.5"
- Hang down height: 1.75"
- Depth: 44.5"

Handles

- Protrude 1.875"

Total Space Occupied

- Height: 30.5"
- Width: 88"
- Depth: 46"

	*Section Starting & Ending Points	Vertical Height Per section	Effective Depth For Each Section
Top	26.75" – 30.98"	3.25"	30.50"
	26.57" – 26.75"	.18"	29.50"
	21.00" – 26.57"	5.57"	30.50"
Center	9.00" – 21.00"	12.00"	28.75"
	3.43" – 9.00"	5.57"	30.50"
	3.25" – 3.43"	.18"	29.50"
Bottom	0.00" – 3.25"	3.25"	30.50"

3OD-50DXC

50" H x 88.5" W x 25" D (78 RU) Outdoor Enclosure



General

Weight

- 353 Lbs. assembled
- 513 Lbs. shipping weight

Doors

- 6, secured by three point locking system
- Locks via customer supplied padlocks
- Sealed with .875" aluminum filled gaskets

Material

- .125" Alumiflex™
- Finish: Painted cream
- RF properties: Non-ferrous

Vents

- 30 bottom louvers per door
- 26 top louvers – In top cover-under Alumishield™
- One removable filter panel per door
- 26 fixed bug screens in top cover

Handles

- Stainless steel, padlocking

Lifting Hooks

- 4, standard

Racking Specifications

Rails

- Three sets standard (for additional rails see accessories)
- Alodine coated
- Holes tapped for 10-32 threads
- Each rail supported by three R-STRUTS™
- .125" Material (Alumiflex™)

Spacing

- 19" or 23" Racking available

Useable Height

- 45.5"

Useable Depth

- Maximum: 21.5" Minimum: 19.75"

Inside Clearance - Less Rails

Height

- 50"

Width

- 26.6875" each side

Depth

- See racking specifications – Useable depth

Ratings

NEMA Class Types available

- Class 250 Type 4X

Paint Tested

- 1000 Hour salt spray (textured)
- 1000 Hour immersion

Door Opening Clearance

Height

- 46"

Width

- 23.625"

Exterior Cabinet Dimensions

Main Body

- Height: 50.5"
- Width: 88"
- Depth: 25"

Alumishield™

- Hang down height: 1.75"
- Width: 93.5"
- Depth: 29.5"

Handles

- Protrude 1.875"

Total Space Occupied

- Height: 50.5"
- Width: 88"
- Depth: 29"

	*Section Starting & Ending Points	Vertical Height Per section	Effective Depth For Each Section
Top	46.75" – 50.23"	3.25"	21.50"
	46.57" – 46.75"	.18"	20.50"
	31.00" - 46.57"	15.57"	21.50"
Center	19.00"-31.00"	12.00"	19.75"
	3.43" – 19.00"	15.57"	21.50"
	3.25" – 3.43"	.18"	20.50"
Bottom	0.00" – 3.25"	3.25"	21.50"

30D-50DDC

50" H x 88.5" W x 34" D (156 RU) Outdoor Enclosure



General

Weight

- 424 Lbs. assembled
- 584 Lbs. shipping weight

Doors

- 6, secured by three point locking system
- Locks via customer supplied padlocks
- Sealed with .875" aluminum filled gaskets

Material

- .125" Alumiflex™
- Finish: Painted cream
- RF properties: Non-ferrous

Vents

- 30 bottom louvers per door
- 26 top louvers – In top cover, under Alumishield™
- One removable filter panel per door
- 26 fixed bug screens in top cover

Handles

- Stainless steel, padlocking

Lifting Hooks

- 6, standard

Racking Specifications

Rails

- Six sets standard (for additional rails see accessories)
- Alodine coated
- Holes tapped for 10-32 threads
- Each rail supported by three R-STRUTS™
- .125" Material (Alumiflex™)

Spacing

- 19" or 23" Racking available

Useable Height

- 45.8125"

Useable Depth

- Maximum: 30.5" Minimum: 28.75"

Inside Clearance - Less Rails

Height

- 50"

Width

- 26.6875" each compartment

Depth

- See racking specifications
- Useable depth

Ratings

NEMA Class Types available

- Class 250 Type 4X

Paint Tested

- 1000 Hour salt spray (textured)
- 1000 Hour immersion

Door Opening Clearance

Height

- 46"

Width

- 23.625"

Exterior Cabinet Dimensions

Main Body

- Height: 50.25"
- Width: 88"
- Depth: 34.25"

Alumishield™

- Hang down height: 1.75"
- Width: 93.5"
- Depth: 36.5"

Handles

- Protrude 1.875"

Total Space Occupied

- Height: 50.5"
- Width: 88"
- Depth: 38"

	*Section Starting & Ending Points	Vertical Height Per section	Effective Depth For Each Section
Top	46.75" – 50.23"	3.25"	30.50"
	46.57" – 46.75"	.18"	29.50"
	31.00" - 46.57"	15.57"	30.50"
Center	19.00"-31.00"	12.00"	28.75"
	3.43" – 19.00"	15.57"	30.50"
	3.25" – 3.43"	.18"	29.50"
Bottom	0.00" – 3.25"	3.25"	30.50"

30D-50DDXC-POP3-4

66" H x 88.5" W x 42" D (156 RU) Outdoor Enclosure



General

Weight

- 660 Lbs. assembled
- 820 Lbs. shipping weight

Doors

- 6, secured by three point locking system
- Locks via customer supplied padlocks
- Sealed with .875" aluminum filled gaskets

Material

- .125" Alumiflex™
- Finish: Painted cream
- RF properties: Non-ferrous

Vents

- 30 bottom louvers per door
- 26 top louvers – In top cover, under Alumishield™
- One removable filter panel per door
- 26 fixed bug screens in top cover

Handles

- Stainless steel, padlocking

Lifting Hooks

- 8, standard

Racking Specifications

Rails

- Six sets standard (for additional rails see accessories)
- Alodine coated
- Holes tapped for 10-32 threads
- Each rail supported by three R-STRUTS™
- .125" Material (Alumiflex™)

Spacing

- 19" or 23" Racking available

Useable Height

- 50"

Useable Depth

- Maximum: 38.5" Minimum: 36.75"

Inside Clearance - Less Rails

Width

- 27.96" each side

Height

- 50"

Depth

- See racking specifications
- Useable depth

Ratings

NEMA Class Types available

- Class 250 Type 4X

Paint Tested

- 1000 Hour salt spray (textured)
- 1000 Hour immersion

Door Opening Clearance

Height

- 46"

Width

- 23.625"

Exterior Cabinet Dimensions

Main Body

- Height: 50.23"
- Width: 88.5"
- Depth: 42"

Alumishield™

- Hang down height: 1.75"
- Width: 93.5"
- Depth: 45.5"

Handles

- Protrude 1.875"

Total Space Occupied

- Height: 66.5"
- Width: 110"
- Depth: 43.875"

POP3-4 Enclosures Come With:

- LC-200 200 Amp Main Load Center w/ (6) 4-Square Outlets, (2) 220V Outlets
- 2 Fluorescent Lights
- Lifting Hooks
- Door Windlocks
- Door Alarms
- 4" C-Channel Feet for Mounting
- 2 - 8000 BTU Air Conditioner 220 Volts with 800 Watts Total Fan Heaters (16K Total BTU)
- Spool-Up Side Box – 26"H X 22"W X 10"D
- Battery Boxes - 3 Separate Battery Compartment Tray's for a 30D

	*Section Starting & Ending Points	Vertical Height Per section	Effective Depth For Each Section
Top	46.75" – 50.23"	3.25"	38.50"
	46.57" – 46.75"	.18"	37.50"
	31.00" - 46.57"	15.57"	38.50"
Center	19.00"-31.00"	12.00"	36.75"
	3.43" – 19.00"	15.57"	38.50"
	3.25" – 3.43"	.18"	37.50"
Bottom	0.00" – 3.25"	3.25"	38.50"

30D-62DXC

62" H x 88.5" W x 25" D (99 RU) Outdoor Enclosure



General

Weight

- 407 Lbs. assembled
- 567 Lbs. shipping weight

Doors

- 6, secured by three point locking system
- Locks via customer supplied padlocks
- Sealed with .875" aluminum filled gaskets

Material

- .125" Alumiflex™
- Finish: Painted cream
- RF properties: Non-ferrous

Vents

- 30 bottom louvers per door
- 24 top louvers – In top cover, under Alumishield™
- One removable filter panel per door
- 24 fixed bug screens in top cover

Handles

- Stainless steel, padlocking

Lifting Hooks

- 4, standard

Racking Specifications

Rails

- Six sets standard (for additional rails see accessories)
- Alodine coated
- Holes tapped for 10-32 threads
- Each rail supported by three R-STRUTS™
- .125" Material (Alumiflex™)

Spacing

- 19" or 23" Racking available

Useable Height

- 57.75"

Useable Depth

- Maximum: 21.5" Minimum: 19.75"

Inside Clearance - Less Rails

Height

- 62"

Width

- 26.6875" each compartment

Depth

- See racking specifications – Useable depth

Ratings

NEMA Class Types available

- Class 250 Type 4X

Paint Tested

- 1000 Hour salt spray (textured)
- 1000 Hour immersion

Door Opening Clearance

Height

- 58.25"

Width

- 23.625"

Exterior Cabinet Dimensions

Main Body

- Width: 88"
- Height: 62.48"
- Depth: 25.25"

Alumishield™

- Hang down height: 1.75"
- Width: 93.5"
- Depth: 29.5"

Handles

- Protrude 1.875"

Total Space Occupied

- Height: 63.105"
- Width: 88"
- Depth: 29"

	*Section Starting & Ending Points	Vertical Height Per section	Effective Depth For Each Section
Top	58.75" – 62.48"	3.25"	21.50"
	58.57" – 58.75"	.18"	20.50"
	37.00" – 58.57"	21.57	21.50"
Center	19.00"-31.00"	12.00"	19.75"
	3.43" – 25.00"	21.57	21.50"
	3.25" – 3.43"	.18"	20.50"
Bottom	0.00" – 3.25"	3.25"	21.50"

3OD-62DDC

62" H x 88.5" W x 34" D (198 RU) Outdoor Enclosure



General

Weight

- 481 Lbs. assembled
- 641 Lbs. shipping weight

Doors

- 6, secured by three point locking system
- Locks via customer supplied padlocks
- Sealed with .875" aluminum filled gaskets

Material

- .125" Alumiflex™
- Finish: Painted cream
- RF properties: Non-ferrous

Vents

- 30 bottom louvers per door
- 24 top louvers – In top cover, under Alumishield™
- One removable filter panel per door
- 24 fixed bug screens in top cover

Handles

- Stainless steel, padlocking

Lifting Hooks

- 6, standard

Racking Specifications

Rails

- Six sets standard (for additional rails see accessories)
- Alodine coated
- Holes tapped for 10-32 threads
- Each rail supported by three R-STRUTS™
- .125" Material (Alumiflex™)

Spacing

- 19" or 23" Racking available

Useable Height

- 57.75"

Useable Depth

- Maximum: 30.5" Minimum: 28.75"

Inside Clearance - Less Rails

Height

- 62"

Width

- 26.6875" each compartment

Depth

- See racking specifications – Useable depth

Ratings

NEMA Class Types available

- Class 250 Type 4X

Paint Tested

- 1000 Hour salt spray (textured)
- 1000 Hour immersion

Door Opening Clearance

Height

- 58.25"

Width

- 23.625"

Exterior Cabinet Dimensions

Main Body

- Width: 88"
- Height: 62.48"
- Depth: 34.25"

Alumishield™

- Hang down height: 1.75"
- Width: 93.5"
- Depth: 36.5"

Handles

- Protrude 1.875"

Total Space Occupied

- Height: 63.105"
- Width: 88"
- Depth: 38"

	*Section Starting & Ending Points	Vertical Height Per section	Effective Depth For Each Section
Top	58.75" – 62.48"	3.25"	30.50"
	58.57" – 58.75"	.18"	29.50"
	37.00" – 58.57"	21.57	30.50"
Center	25.00" – 37.00"	12.00"	28.75"
	3.43" – 25.00"	21.57	30.50"
	3.25" – 3.43"	.18"	29.50"
Bottom	0.00" – 3.25"	3.25"	30.50"

30D-62DDXC-POP3-4

62" H x 88.5" W x 42" D (198 RU) Outdoor Enclosure



POP3-4 Enclosures Come With:

- LC-200 200 Amp Main Load Center w/ (6) 4-Square Outlets, (2) 220V Outlets
- 2 Fluorescent Lights
- Lifting Hooks
- Door Windlocks
- Door Alarms
- 4" C-Channel Feet for Mounting
- 2 - 8000 BTU Air Conditioner 220 Volts with 800 Watts Total Fan Heaters (16K Total BTU)
- Spool-Up Side Box – 26"H X 22"W X 10"D
- Battery Boxes - 3 Separate Battery Compartment Tray's for a 30D

General

Weight

- 620 Lbs. assembled
- 780 Lbs. shipping weight

Doors

- 2, secured by three point locking system
- Locks via customer supplied padlocks
- Sealed with .875" aluminum filled gaskets

Material

- .125" Alumiflex™
- Finish: Painted cream
- RF properties: Non-ferrous

Vents

- 30 bottom louvers per door
- 26 top louvers – In top cover, under Alumishield™
- One removable filter panel per door
- 26 fixed filter pads in top cover

Handles

- Stainless steel, padlocking

Lifting Hooks

- 8, standard

Racking Specifications

Rails

- Six sets standard (for additional rails see accessories)
- Alodine coated
- Holes tapped for 10-32 threads
- Each rail supported by two R-STRUTS™
- .125" Material (Alumiflex™)

Spacing

- 19" or 23" Racking available

Useable Height

- 57.75"

Useable Depth

- Maximum: 38.5" Minimum: 36.75"

Inside Clearance - Less Rails

Height

- 62"

Width

- 26.6875" each compartment

Depth

- See racking specifications
- Useable depth

Ratings

NEMA Class Types available

- Class 250 Type 4X

Paint Tested

- 1000 Hour salt spray (textured)
- 1000 Hour immersion

Door Opening Clearance

Height

- 58.25"

Width

- 23.625"

Exterior Cabinet Dimensions

Main Body

- Width: 88.5"
- Height: 62.23"
- Depth: 42"

Alumishield™

- Hang down height: 1.75"
- Width: 93.5"
- Depth: 45.5"

Handles

- Protrude 1.875"

Total Space Occupied

- Total Height: 78.96"
- Cabinet Height: 63.105"
- Battery Box: 17.605"
- Width: 110"
- Depth: 42"

	*Section Starting & Ending Points	Vertical Height Per section	Effective Depth For Each Section
Top	58.75" – 62.48"	3.25"	38.50"
	58.57" – 58.75"	.18"	37.50"
	37.00" – 58.57"	21.57"	38.50"
Center	25.00" – 37.00"	12.00"	36.75"
	3.43" – 25.00"	21.57"	38.50"
	3.25" – 3.43"	.18"	37.50"
Bottom	0.00" – 3.25"	3.25"	38.50"

3OD-78DXC

78" H x 88.5" W x 25" D (126 RU) Outdoor Enclosure



General

Weight

- 478 Lbs. assembled
- 638 Lbs. shipping weight

Doors

- 6, secured by three point locking system
- Locks via customer supplied padlocks
- Sealed with .875" aluminum filled gaskets

Material

- .125" Alumiflex™
- Finish: Painted cream
- RF properties: Non-ferrous

Vents

- 30 bottom louvers per door
- 26 top louvers – In top cover, under Alumishield™
- One removable filter panel per door
- 26 fixed filter pads in top cover

Handles

- Stainless steel, padlocking

Lifting Hooks

- 4, standard

Racking Specifications

Rails

- Three sets standard (for additional rails see accessories)
- Alodine coated
- Holes tapped for 10-32 threads
- Each rail supported by two R-STRUTS™
- .125" Material (Alumiflex™)

Spacing

- 19" or 23" Racking available

Useable Height

- 73.5"

Useable Depth

- Maximum: 21.5" Minimum: 19.75"

Inside Clearance - Less Rails

Height

- 78"

Width

- 26.6875" each compartment

Depth

- See racking specifications
- Useable depth

Ratings

NEMA Class Types available

- Class 250 Type 4X

Paint Tested

- 1000 Hour salt spray (textured)
- 1000 Hour immersion

Door Opening Clearance

Height

- 74"

Width

- 23.625"

Exterior Cabinet Dimensions

Main Body

- Height: 78.25"
- Width: 88"
- Depth: 25.25"

Alumishield™

- Hang down height: 1.75"
- Width: 93.5"
- Depth: 29.5"

Handles

- Protrude 1.875"

Total Space Occupied

- Height: 78.5"
- Width: 88"
- Depth: 29"

	*Section Starting & Ending Points	Vertical Height Per section	Effective Depth For Each Section
Top	74.75" – 78.23"	3.25"	21.50"
	74.57" – 74.75"	.18"	20.50"
	45.00" – 74.57"	15.57	21.50"
Center	33.00"-45.00"	7.94"	19.75"
	3.43" – 33.00"	15.57	21.50"
	3.25" – 3.43"	.18"	20.50"
Bottom	0.00" – 3.25"	3.25"	21.50"

3OD-78DDC

78" H x 88.5" W x 34" D (252 RU) Outdoor Enclosure



General

Weight

- 572 Lbs. assembled
- 732 Lbs. shipping weight

Doors

- 6, secured by three point locking system
- Locks via customer supplied padlocks
- Sealed with .875" aluminum filled gaskets

Material

- .125" Alumiflex™
- Finish: Painted cream
- RF properties: Non-ferrous

Vents

- 30 bottom louvers per door
- 26 top louvers – In top cover-under Alumishield™
- One removable filter panel per door
- 26 fixed filter pads in top cover

Handles

- Stainless steel, padlocking

Lifting Hooks

- 6, standard

Racking Specifications

Rails

- Six sets standard (for additional rails see accessories)
- Alodine coated
- Holes tapped for 10-32 threads
- Each rail supported by two R-STRUTS™
- .125" Material (Alumiflex™)

Spacing

- 19" or 23" Racking available

Useable Height

- 73.5"

Useable Depth

- Maximum: 30.5" Minimum: 28.75"

Inside Clearance - Less Rails

Height

- 78"

Width

- 26.6875" each compartment

Depth

- See racking specifications – Useable depth

Ratings

NEMA Class Types available

- Class 250 Type 4X

Paint Tested

- 1000 Hour salt spray (textured)
- 1000 Hour immersion

Door Opening Clearance

Height

- 74"

Width

- 23.625"

Exterior Cabinet Dimensions

Main Body

- Height: 78.25"
- Width: 88"
- Depth: 34.25"

Alumishield™

- Hang down height: 1.75"
- Width: 93.5"
- Depth: 38.5"

Handles

- Protrude 1.875"

Total Space Occupied

- Height: 78.5"
- Width: 88"
- Depth: 38"

	*Section Starting & Ending Points	Vertical Height Per section	Effective Depth For Each Section
Top	74.75" – 78.23"	3.25"	30.50"
	74.57" – 74.75"	.18"	29.50"
	45.00" – 74.57"	29.57"	30.50"
Center	33.00" – 45.00"	12.00"	28.75"
	3.43" – 33.00"	29.57"	30.50"
	3.25" – 3.43"	.18"	29.50"
Bottom	0.00" – 3.25"	3.25"	30.50"

3OD-78DDXC-POP3-2

94" H x 88.5" W x 42" D (252 RU) Outdoor Enclosure



General

Weight

- 572 Lbs. assembled
- 732 Lbs. shipping weight

Doors

- 6, secured by three point locking system
- Locks via customer supplied padlocks
- Sealed with .875" aluminum filled gaskets

Material

- .125" Alumiflex™
- Finish: Painted cream
- RF properties: Non-ferrous

Vents

- 30 bottom louvers per door
- 26 top louvers – In top cover-under Alumishield™
- One removable filter panel per door
- 26 fixed filter pads in top cover

Handles

- Stainless steel, padlocking

Lifting Hooks

- 8, standard

Racking Specifications

Rails

- Six sets standard (for additional rails see accessories)
- Alodine coated
- Holes tapped for 10-32 threads
- Each rail supported by two R-STRUTS™
- .125" Material (Alumiflex™)

Spacing

- 19" or 23" Racking available

Useable Height

- 73.5"

Useable Depth

- Maximum: 38.5" Minimum: 36.75"

Inside Clearance - Less Rails

Height

- 78"

Width

- 26.6875" each compartment

Depth

- See racking specifications – Useable depth

Ratings

NEMA Class Types available

- Class 250 Type 4X

Paint Tested

- 1000 Hour salt spray (textured)
- 1000 Hour immersion

Door Opening Clearance

Height

- 74"

Width

- 23.625"

Exterior Cabinet Dimensions

Main Body

- Height: 78"
- Width: 88.5"
- Depth: 42"

Alumishield™

- Hang down height: 1.75"
- Width: 93.5"
- Depth: 45.5"

Handles

- Protrude 1.875"

Total Space Occupied

- Total Height: 96.105"
- Cabinet Height: 78.5"
- Battery Box: 17.605"
- Width: 110"
- Depth: 42"

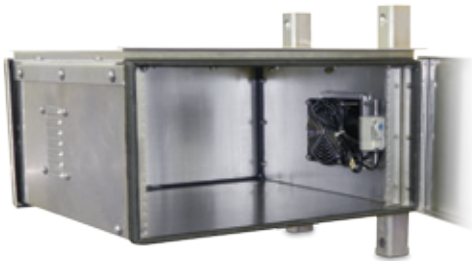
POP3-2 Enclosures Come With:

- LC-200 200 Amp Main Load Center w/ (6) 4-Square Outlets, (2) 220V Outlets
- 2 Fluorescent Lights
- Lifting Hooks
- Door Windlocks
- Door Alarms
- 4" C-Channel Feet for Mounting
- 2 - 8000 BTU Air Conditioner 220 Volts with 800 Watts Total Fan Heaters (16K Total BTU)
- Spool-Up Side Box – 26"H X 22"W X 10"D

	*Section Starting & Ending Points	Vertical Height Per section	Effective Depth For Each Section
Top	74.75" – 78.23"	3.25"	38.50"
	74.57" – 74.75"	.18"	37.50"
	45.00" – 74.57"	29.57"	38.50"
Center	33.00" – 45.00"	12.00"	36.75"
	3.43" – 33.00"	29.57"	38.50"
	3.25" – 3.43"	.18"	37.50"
Bottom	0.00" – 3.25"	3.25"	38.50"

OP2D-102120FT

10" H x 21" W x 20" D (5 RU) Outdoor Enclosure



General

Weight

- 40 Lbs. assembled

Doors

- 2, front and rear secured by quarter turn lock

Material

- .125" Alumiflex™
- Finish: Flat aluminum
- RF properties: Non-ferrous

Vents

- 7 louvers per side

Racking Specifications

Rails

- 1 set standard (for additional rails see accessories)
- Alodine coated
- Holes tapped for 10-32 threads
- .125" Material (Alumiflex™)

Spacing

- 19" EIA standard

Useable Height

- Usable racking height has been revised to only fit in the opening of the door jam which is cabinet height minus 3.75"
- Height: 10"

Useable Depth

- Maximum: 20"

Inside Clearance - Less Rails

Height

- 9.75"

Width

- 20.75"

Depth

- See racking specifications – Useable depth

Ratings

NEMA Class Types available

- NEMA 3R (Vented), NEMA 4 (closed loop-a/c), NEMA 4X

Paint Tested

- 1000 Hour salt spray (textured)
- 1000 Hour immersion

Door Opening Clearance

Height

- 10"

Width

- 21"

Exterior Cabinet Dimensions

Main Body

- Height: 11"
- Width: 21.25"
- Depth: 21"

Alumishield™

- Hang down height: 1.125"
- Width: 21.25"
- Depth: 2.625"

Handles

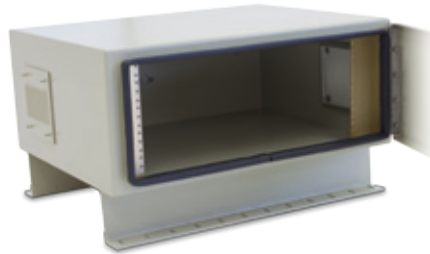
- Protrude 1.875"

Total Space Occupied

- Height: 18"
- Width: 23"
- Depth: 21.375"

PNOD-102420FT

10" H x 24" W x 20" D (5 RU) Outdoor Enclosure



General

Weight

- 40 Lbs. assembled

Doors

- Single Door sealed by Gasket filled rubber

Material

- .125" Alumiflex™ (non-corrosive)
- Finish: Painted cream

Handles

- Quarter turn padlocking handle

Mounting

C-Channel Feet

- Width: 4"
- Height: 2"
- Depth: 19"

Mounting Slots

- Width: .125"
- Height: 1"

Spacing

- 2 inch on center, .75" inch from end to center first slot

Racking Specifications

Rails

- One set standard (for additional rails see accessories)
- Alodine coated
- Holes tapped for 10-32 threads
- .125" Material (Alumiflex™)

Spacing

- 19" EIA standard

Useable Height

- Usable racking height has been revised to only fit in the opening of the door jam which is cabinet height minus 3.75"
- Height: 10"
- 5 RU

Useable Depth

- Maximum: 21.5" Minimum: 19.75"

Inside Clearance - Less Rails

Height

- 9.75" (Horizontal Width)

Width

- 23.625" (19" EIA Racking)

Depth

- 18" (Vertical Height)

Exterior Cabinet Dimensions

Main Body

- Height: 10" (Horizontal Width)
- Width: 24"
- Depth: 21" (Vertical Height)

Total Space Occupied

- Height: 14" (Horizontal Width)
- Width: 24"
- Depth: 21" (Vertical Height)

OPSOD-102420FT

10" H x 24" W x 20" D (5 RU) Outdoor Enclosure



General

Weight

- 40 Lbs. assembled

Doors

- Single door sealed by Gasket filled rubber

Material

- .125" Alumiflex™ (non-corrosive)
- Finish: Painted cream

Handles

- Quarter turn padlocking handle

Racking Specifications

Rails

- One set standard (for additional rails see accessories)
- Alodine coated
- Holes tapped for 10-32 threads
- .125" Material (Alumiflex™)

Spacing

- 19" EIA standard

Useable Height

- Usable racking height has been revised to only fit in the opening of the door jam which is cabinet height minus 3.75"
- Height: 10"

Useable Depth

- Maximum: 21.5" Minimum: 19.75"

Mounting

C-Channel Feet

- Width: 4"
- Height: 2"
- Depth: 3.5"

Mounting Slots

- Width: .125"
- Height: 1"

Spacing

- 2 inch on center, .75" inch from end to center first slot

Inside Clearance - Less Rails

Height

- 9.75"

Width

- 23.75"

Depth

- 19.75"

Ratings

NEMA Class Types available

- Class 250 Type 4X

Paint Tested

- 1000 Hour salt spray (textured)
- 1000 Hour immersion

Door Opening Clearance

Height

- 7"

Width

- 21.5"

Exterior Cabinet Dimensions

Main Body

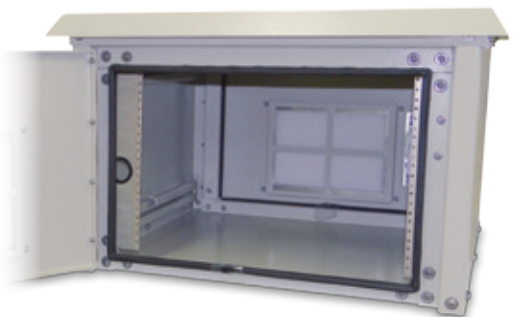
- Height: 10"
- Width: 24"
- Depth: 20"

Total Space Occupied

- Height: 11"
- Width: 24"
- Depth: 26.625"

POD-16DXC

16" H x 25" W x 25" D (7 RU) Outdoor Enclosure



General

Weight

- 80 Lbs. assembled
- 130 Lbs. shipping weight

Doors

- 2, Secured Quarter Turn HD Hasp
- Sealed with .875" aluminum filled gaskets

Material

- .125" Alumiflex™
- Finish: Painted cream
- RF properties: Non-ferrous

Vents

- 30 bottom louvers per door
- 12 top louvers – In top cover-under Alumishield™
- One removable filter panel per door
- 12 fixed filter pads in top cover

Handles

- Stainless steel, padlocking

Racking Specifications

Rails

- One set standard (for additional rails see accessories)
- Alodine coated
- Holes tapped for 10-32 threads
- Each rail supported by two R-STRUTS™
- .125" Material (Alumiflex™)

Spacing

- 19" EIA standard

Useable Height

- Usable racking height has been revised to only fit in the opening of the door jam which is cabinet height minus 3.75"
- Maximum: 12.75"
- Number of rack units per rail set: 7
- Total number of rack units: 7

Useable Depth

- Maximum: 21.5" Minimum: 19.75"

Inside Clearance - Less Rails

Height

- 16"

Width

- 23.625"

Depth

- See racking specifications
- Useable depth

Ratings

NEMA Class Types available

- Class 250 Type 4X

Paint Tested

- 1000 Hour salt spray (textured)
- 1000 Hour immersion

Door Opening Clearance

Height

- 12.75"

Width

- 19.5"

Exterior Cabinet Dimensions

Main Body

- Height: 16.98"
- Width: 25.5"
- Depth: 25.25"

Alumishield™

- Hang down height: 1.75"
- Width: 28.46"
- Depth: 27.67"

Handles

- Protrude 1.875"

Total Space Occupied

- Height: 17.605"
- Width: 28.46"
- Depth: 28.75"

	*Section Starting & Ending Points	Vertical Height Per section	Effective Depth For Each Section
Top	12.75" – 16.98"	3.25"	21.50"
	12.57" – 12.75"	.18"	20.50"
	12.57"	15.57	21.50"
Center	13.185" - 5.40"	7.94"	19.75"
	3.43" - 19.00"	15.57	21.50"
	3.25" – 3.43"	.18"	20.50"
Bottom	0.00" – 3.25"	3.25"	21.50"

OPSOD-192420FT

19" H x 24" W x 20" D (10 RU) Outdoor Enclosure



General

Weight

- 53 Lbs. assembled
- 96 Lbs. shipping weight

Doors

- Gasket filled rubber

Material

- .125" Alumiflex™ (non-corrosive)
- Finish: Painted cream

Handles

- Quarter turn padlocking handle

Vents

- 7 louvers per side

Racking Specifications

Rails

- One set standard (for additional rails see accessories)
- Alodine coated
- Holes tapped for 10-32 threads
- .125" Material (Alumiflex™)

Spacing

- 19" EIA standard

Useable Height

- Usable racking height has been revised to only fit in the opening of the door jam which is cabinet height minus 3.75"
- Height: 18"
- 10 RU

Useable Depth

- Maximum: 21.5" Minimum: 19.75"

Mounting

C-Channel Feet

- Height: 2"
- Width: 4"
- Depth: 3.625"

Mounting Slots

- Width: .125"
- Height: 1"

Spacing

- 2 inch on center, .75" inch from end to center first slot

Inside Clearance - Less Rails

Height

- 18.75"

Width

- 23.75"

Depth

- 19.75"

Ratings

NEMA Class Types available

- Class 250 Type 4X

Paint Tested

- 1000 Hour salt spray (textured)
- 1000 Hour immersion

Door Opening Clearance

Height

- 16"

Width

- 21.5"

Exterior Cabinet Dimensions

Main Body

- Height: 19"
- Width: 24"
- Depth: 20"

Total Space Occupied

- Height: 20"
- Width: 24"
- Depth: 26.625"

OPSOD-192420-AC

19" H x 24" W x 20" D (10 RU) Outdoor Enclosure



General

Weight

- 74 Lbs. assembled
- 109 Lbs. shipping weight

Doors

- Gasket filled rubber

Material

- .125" Alumiflex™ (non-corrosive)
- Finish: Painted cream

Handles

- Quarter turn padlocking handle

Racking Specifications

Rails

- One set standard (for additional rails see accessories)
- Alodine coated
- Holes tapped for 10-32 threads
- Each rail supported by two R-STRUTS™
- .125" Material (Alumiflex™)

Spacing

- 19" EIA standard

Useable Height

- Usable racking height has been revised to only fit in the opening of the door jam which is cabinet height minus 3.75"
- Height: 19"

Useable Depth

- Maximum: 21.5" Minimum: 19.75"

Comes With

- 1000 BTU Air Programmable Conditioner 110 Volt
- .5 Insulation
- Populated 4 Square Outlet

Mounting

C-Channel Feet

- Width: 4"
- Height: 2"
- Depth: 3.625"

Mounting Slots

- Width: .125"
- Height: 1"

Spacing

- 2 inch on center, 3/4" inch from end to center first slot

Inside Clearance - Less Rails

Height

- 18.75"

Width

- 23.75"

Depth

- 19.75"

Ratings

NEMA Class Types available

- Class 250 Type 4X

Paint Tested

- 1000 Hour salt spray (textured)
- 1000 Hour immersion

Door Opening Clearance

Height

- 16"

Width

- 21.5"

Exterior Cabinet Dimensions

Main Body

- Height: 19"
- Width: 24"
- Depth: 20"

Total Space Occupied

- Height: 20"
- Width: 24"
- Depth: 26.625"

PBOD-253017FT

25" H x 17" D (6 RU) Outdoor Enclosure



General

Weight

- 78 Lbs. assembled
- 118 Lbs. shipping weight

Material

- .125" Alumiflex™
- Finish: Painted cream
- RF Properties: Non-ferrous

Vents

- 2 Louvers Panels per side
- 28 Vents Total

Top Racking Compartment

Height

- 11.75"

19" Racking Door Height

- 10.5"

Racking Specifications

Rails

- One set standard (for additional rails see accessories)
- Alodine coated
- Holes tapped for 10-32 threads
- .125" Material (Alumiflex™)

Spacing

- 19" EIA standard

Bottom Battery Compartment

Height

- 11.875"

Battery Tray Door Height

- 9.75"



Mounting

C-Channel Feet

- Width: 4"
- Height: 2"
- Depth: 29.5"

Mounting Slots

- Width: .25"
- Height: 1"

Spacing

- 2 inch on center, .75" inch from end to center first slot

Ratings

NEMA Class Types available

- NEMA 3R

Paint Tested

- 1000 Hour salt spray (textured)
- 1000 Hour immersion

Exterior Cabinet Dimensions

Main Body

- Height: 25"
- Width: 30"
- Depth: 17"

Top Door Dimensions

- Depth: 18"
- Width: 29.75"
- Top Opening: 15"

Side Door Dimensions

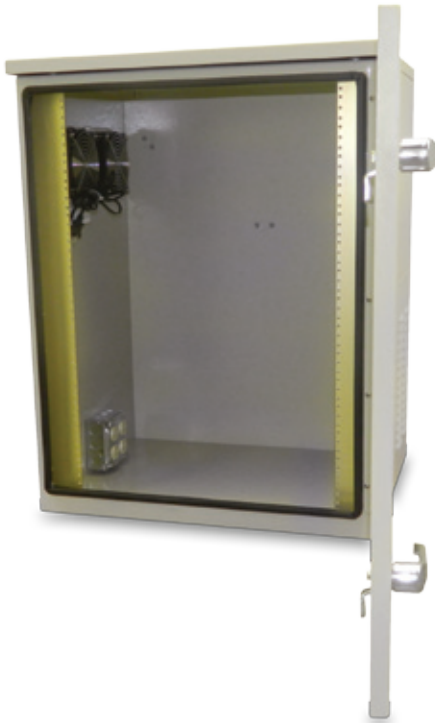
- Height: 23.125"
- Width: 30"

Total Space Occupied

- Height: 26"
- Width: 23.75"
- Depth: 21"

OPSOD-302420-FT

30" H x 24" W x 20" D (16 RU) Outdoor Enclosure



General

Weight

- 70 Lbs. assembled

Doors

- Single Door sealed by Gasket filled rubber

Material

- .125" Alumiflex™ (non-corrosive)
- Finish: Painted cream

Handles

- 2, Quarter turn padlocking handles

Racking Specifications

Rails

- One set standard (for additional rails see accessories)
- Alodine coated
- Holes tapped for 10-32 threads
- .125" Material (Alumiflex™)

Spacing

- 19" EIA standard

Useable Height

- Usable racking height has been revised to only fit in the opening of the door jam which is cabinet height minus 3.75"
- Height: 30"
- 16 RU

Useable Depth

- Maximum: 21.5" Minimum: 19.75"

Mounting

C-Channel Feet

- Height: 2"
- Width: 4"
- Depth: 3.5"

Mounting Slots

- Width: .25"
- Height: 1"

Spacing

- 2 inch on center, .75" inch from end to center first slot

Inside Clearance - Less Rails

Height

- 29.75"

Width

- 23.75"

Depth

- 19.75"

Ratings

NEMA Class Types available

- NEMA 3R

Paint Tested

- 1000 Hour salt spray (textured)
- 1000 Hour immersion

Exterior Cabinet Dimensions

Main Body

- Height: 30"
- Width: 24"
- Depth: 20"

Door Opening

- Height: 27"
- Width: 21.5"

Total Space Occupied

- Height: 31"
- Width: 24"
- Depth: 26.625"

Comes with Following:

- 220 CFM Dual 110 Volt Fan Kit w/ Thermostat
- Populated 4 Square Outlet

OPSOD-302420-BTF

30" H x 24" W x 20" D (17 RU) Outdoor Enclosure



Model Includes

- Dual Fan Kit with Thermostat
- Mid Mount Battery Tray
- 4 = 100 Amp Hr. Batteries
- .5" Insulation

General

Weight

- 625 Lbs. assembled

Doors

- Single door sealed by gasket filled rubber

Material

- .125" Alumiflex™ (non-corrosive)
- Finish: Painted cream

Handles

- 2, Quarter turn padlocking handles

Mounting

C-Channel Feet

- Width: 4"
- Height: 2"
- Depth: 3.5"

Mounting Slots

- Width: .25"
- Height: 1"

Spacing

- 2 inch on center, .75" inch from end to center first slot

Inside Clearance - Less Rails

Height

- 29.75"

Width

- 23.75"

Depth

- 19.75"

Exterior Cabinet Dimensions

Main Body

- Height: 30"
- Width: 24"
- Depth: 20"

Door Opening

- Height: 26.75"
- Width: 21.5"

Total Space Occupied

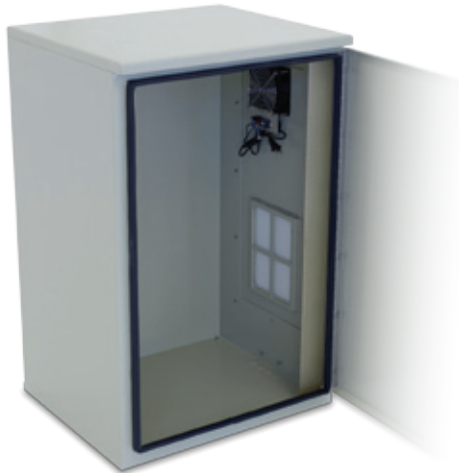
- Height: 31"
- Width: 24"
- Depth: 26.625"

Options

- 1000 or 2400 BTU Air conditioner
- 60 or 100 Amp load center
- Fluorescent light
- Full integration power supplies
- 660 CFM Fan Tray
- Flex or Fan Heater
- 17" Front Mount Tray

SOD-372420FT

38" H x 24" W x 20" D (20 RU) Outdoor Enclosure



General

Weight

- 63 Lbs.

Doors

- Louvered 7.5" x 10"
- 5 micron nylon filter
- Gasket filled rubber

Material

- .125" Alumiflex™ (non-corrosive)
- Finish: Painted cream

Handles

- Quarter turn padlocking handle

Racking Specifications

Rails

- One set standard (for additional rails see accessories)
- Alodine coated
- Holes tapped for 10-32 threads
- .125" Material (Alumiflex™)

Spacing

- 19" EIA standard

Useable Height

- Usable racking height has been revised to only fit in the opening of the door jam which is cabinet height minus 3.75"
- Height: 37"

Useable Depth

- Maximum: 19.25"

Inside Clearance - Less Rails

Height

- 36.75"

Width

- 23.75"

Depth

- 19.75"

Ratings

NEMA Class Types available

- NEMA 3R (Vented), NEMA 4 (closed loop a/c), NEMA 4X

Paint Tested

- 1000 Hour salt spray (textured)
- 1000 Hour immersion

Exterior Cabinet Dimensions

Main Body

- Width: 24"
- Height: 37"
- Depth: 20"

Total Space Occupied

- Height: 38"
- Width: 24"
- Depth: 22.5"

Comes with:

- 110 Volt Fan Kit w/ Thermostat
- .5 Insulation

SOD-372420-VB1

37" H x 24" W x 20" D (16 RU) Wimax Enclosure



General

Weight

- 410 Lbs. assembled
- 470 Lbs. shipping weight

Doors

- Louvered 7.5" x 10"
- 5 micron nylon filter
- Gasket filled rubber

Material

- .125" Alumiflex™ (non-corrosive)
- Finish: Painted cream

Handles

- Quarter turn padlocking handle

Racking Specifications

Rails

- One set standard (for additional rails see accessories)
- Alodine coated
- Holes tapped for 10-32 threads
- .125" Material (Alumiflex™)

Spacing

- 19" EIA standard

Useable Height

- Usable racking height has been revised to only fit in the opening of the door jam which is cabinet height minus 3.75"
- Height: 37"

Useable Depth

- Maximum: 21.5" Minimum: 19.75"

Inside Clearance - Less Rails

Height

- 36.75"

Width

- 23.75"

Depth

- 19.75"

Ratings

NEMA Class Types available

- Class 250 Type 4X

Paint Tested

- 1000 Hour salt spray (textured)
- 1000 Hour immersion

Exterior Cabinet Dimensions

Main Body

- Height: 37"
- Width: 24"
- Depth: 20"

Total Space Occupied

- Height: 38"
- Width: 24"
- Depth: 22.5"

Comes with:

- 2400 BTU Air Conditioner 110 Volts
- (4) 100 Amp Battery
- Battery Tray
- 60 Amp Main Load Center w/ 2 Populated 4 Square Outlets
- .5 Insulation

SOD-372420-LAC

37" H x 24" W x 20" D (20 RU) Outdoor Enclosure



General

Weight

- 130 Lbs. assembled

Doors

- Louvered 7.5" x 10"
- 5 micron nylon filter
- Gasket filled rubber

Material

- .125" Alumiflex™ (non-corrosive)
- Finish: Painted cream

Handles

- Quarter turn padlocking handle

Racking Specifications

Rails

- One set standard (for additional rails see accessories)
- Alodine coated
- Holes tapped for 10-32 threads
- .125" Material (Alumiflex™)

Spacing

- 19" EIA standard

Useable Height

- Usable racking height has been revised to only fit in the opening of the door jam which is cabinet height minus 3.75"
- Height: 37"

Useable Depth

- Maximum: 21.5" Minimum: 19.75"

Inside Clearance - Less Rails

Height

- 36.75"

Width

- 23.75"

Depth

- 19.75"

Ratings

NEMA Class Types available

- Class 250 Type 4X

Paint Tested

- 1000 Hour salt spray (textured)
- 1000 Hour immersion

Exterior Cabinet Dimensions

Main Body

- Width: 24"
- Height: 37"
- Depth: 20"

Total Space Occupied

- Height: 38"
- Width: 24"
- Depth: 22.5"

Comes with:

- 2400 BTU Air Conditioner 110 Volts
- Battery Tray
- 60 Amp Main Load Center w/ 2 Populated 4 Square Outlets
- .5 Insulation

OOD-30DXC-B1

46" H x 25" D (15 RU) Outdoor Enclosure



General

Weight

- 150 Lbs. assembled
- 230 Lbs. shipping weight

Doors

- Four – secured by three point locking system
- Locks via customer supplied padlocks
- Sealed with .875" aluminum filled gaskets

Material

- .125" Alumiflex™
- Finish: Painted cream
- RF properties: Non-ferrous

BOD-DX

- Battery Box enclosure with slide out battery tray

Handles

- Stainless steel, padlocking

Racking Specifications

Rails

- 2 standard (for additional rails see accessories)
- Alodine coated
- Holes tapped for 10-32 threads
- Each rail supported by two R-STRUTS™
- .125" Material (Alumiflex™)

Spacing

- 19" EIA standard

Useable Height

- Height: 30" (Top Enclosure)

Useable Depth

- Maximum: 21.5" Minimum: 19.75"

Inside Clearance - Less Rails

Height

- 30"

Width

- 23.625" each side

Depth

- See racking specifications – Useable depth

Ratings

NEMA Class Types available

- NEMA 3R (Vented), NEMA 4 (closed loop-a/c), NEMA 4X

Paint Tested

- 1000 Hour salt spray
- 1000 Hour immersion

Door Opening Clearance

Height

- 25.8125"

Width

- 19.5"

Exterior Cabinet Dimensions

Main Body

- Height: 47"
- Width: 25.5"
- Depth: 25"

Alumishield™

- Hang down height: 1.75"
- Width: 28"
- Depth: 27.625"

Handles

- Protrude 1.875"

Total Space Occupied

- Height: 47.5"
- Width: 28"
- Depth: 29"

	*Section Starting & Ending Points	Vertical Height Per section	Effective Depth For Each Section
Top	26.75" – 30.00"	3.25"	21.50"
	26.57" – 26.75"	.18"	20.50"
	21.00" – 26.57"	5.57"	21.50"
Center	9.00" – 21.00"	12.00"	19.75"
	3.43" – 9.00"	5.57"	21.50"
	3.25" – 3.43"	.18"	20.50"
Bottom	0.00" – 3.25"	3.25"	21.50"

OOD-30DXC-B1AC1

46" H x 25" D (15 RU) Outdoor Enclosure



General

Weight

- 220 Lbs. assembled
- 270 Lbs. shipping weight

Doors

- Four – secured by three point .locking system
- Locks via customer supplied padlocks
- Sealed with .875" aluminum filled gaskets

Material

- .125" Alumiflex™
- Finish: Painted cream
- RF properties: Non-ferrous

BAC

Configuration comes with the following:

- 2400 BTU Air conditioner 110 Volts (Internal Heat option)
- With / R3.3 Insulation,
- Battery Box enclosure with slide out battery tray

Handles

- Stainless steel, padlocking

Racking Specifications

Rails

- 2 standard (for additional rails see accessories)
- Alodine coated
- Holes tapped for 10-32 threads
- Each rail supported by two R-STRUTS™
- .125" Material (Alumiflex™)

Spacing

- 19" EIA standard

Useable Height

- Height: 30" (Top Enclosure)

Useable Depth

- Maximum: 21.5" Minimum: 19.75"

Inside Clearance - Less Rails

Height

- 30"

Width

- 23.625" each side

Depth

- See racking specifications – Useable depth

Ratings

NEMA Class Types available

- NEMA 4X

Paint Tested

- 1000 Hour salt spray
- 1000 Hour immersion

Door Opening Clearance

Height

- 25.8125"

Width

- 19.5"

Exterior Cabinet Dimensions

Main Body

- Height: 47"
- Width: 25.5"
- Depth: 25"

Alumishield™

- Hang down height: 1.75"
- Width: 28"
- Depth: 27.625"

Handles

- Protrude 1.875"

Total Space Occupied

- Height: 47.5"
- Width: 28"
- Depth: 29"

Comes with:

- Bottom Battery Compartment
- 2400 BTU Air Conditioner 110 Volts
- .5 Insulation
- Populated 4 Square Outlet

	*Section Starting & Ending Points	Vertical Height Per section	Effective Depth For Each Section
Top	26.75" – 30.00"	3.25"	21.50"
	26.57" – 26.75"	.18"	20.50"
	21.00" – 26.57"	5.57"	21.50"
Center	9.00" – 21.00"	12.00"	19.75"
	3.43" – 9.00"	5.57"	21.50"
	3.25" – 3.43"	.18"	20.50"
Bottom	0.00" – 3.25"	3.25"	21.50"

OOD-39DXC-D1

39" H x 27" W x 35" D (21 RU) Outdoor Enclosure



General

Weight

- 210 Lbs. assembled
- 250 Lbs. shipping weight

Doors

- Two – secured by three point locking system
- Locks via customer supplied padlocks
- Sealed with .875" aluminum filled gaskets

Material

- .125" Alumiflex™
- Finish: Painted cream
- RF properties: Non-ferrous

Handles

- Stainless steel, padlocking

Racking Specifications

Rails

- 1 Set of 19" and 1 set of 23" Racking Rails
- Holes tapped for 10-32 threads
- Each rail supported by two R-STRUTS™
- .125" Material (Alumiflex™)

Spacing

- EIA standard

Useable Height

- Height: 39"

Useable Depth

- Maximum: 21.5" Minimum: 19.75"

Comes with:

- 2400 BTU Air Conditioner
- Load Center
- Fiber Management

Inside Clearance - Less Rails

Height

- 39"

Width

- 23.625" each side

Depth

- See racking specifications
- Useable depth

Ratings

NEMA Class Types available

- NEMA 4X

Paint Tested

- 1000 Hour salt spray
- 1000 Hour immersion

Door Opening Clearance

Height

- 35.8125"

Width

- 21.5"

Exterior Cabinet Dimensions

Main Body

- Height: 41"
- Width: 27.5"
- Depth: 25"

Alumishield™

- Hang down height: 2.75"
- Width: 31"
- Depth: 28.625"

Handles

- Protrude 1.875"

Total Space Occupied

- Height: 41"
- Width: 31"
- Depth: 38"

PBOD-162018

Pole or Wall Mounting Battery Box Enclosure



Specifications

- Pole or wall mount outdoor battery box
- 16" High x 20" W x 18" D
- Mounting tray 4" H x 15.875" W x 16.4375" D
- Top and bottom mounting tab 2.875"
- Painted cream
- Quarter turn padlocking handle
- Top & bottom full mounting tab
- Slide out shelf
- Filter panel

General

Doors

- One – secured by quarter turn padlocking handle
- Locks via customer supplied padlock
- Sealed with rubber filled gaskets

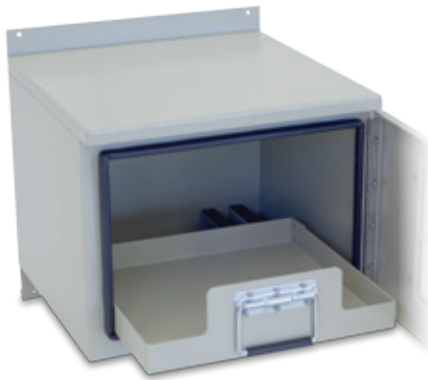
Material

- .125" Alumiflex™
- RF properties: Non-ferrous
- Finish: Painted cream

Ratings

NEMA Class Types available

- Class 250 Type 3R, 4X
- Paint Tested
- 1000 Hour salt spray
- 1000 Hour immersion



BOD-DX to BOD-DDX

Battery Box Enclosure



BOD-DX

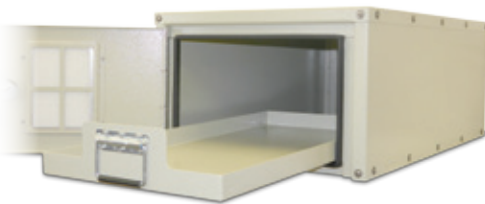
Specifications

- Outdoor Battery Box 16" H x 25" W x 25" D
- Mounting Tray 2" H x 18.75" W x 20" D
- Painted Cream

BOD-DD

Specifications

- Outdoor Battery Box 16" H x 25" W x 34" D
- Mounting Tray 2" H x 18.75" W x 29" D
- Painted Cream



BOD-DDX

Specifications

- Outdoor Battery Box 16" H x 25" W x 42" D
- Mounting Tray 2" H x 18.75" W x 37" D
- Painted Cream

General

Doors

- One – secured by quarter turn padlocking handle
- Locks via customer supplied padlock
- Sealed with rubber filled gaskets

Material

- .125" Alumiflex™
- RF properties: Non-ferrous

Ratings

NEMA Class Types available

- Class 250 Type 3R, 4X
- Paint Tested
- 1000 Hour salt spray
- 1000 Hour immersion

TR-336XL

(17 RU) Traffic Enclosures



General

Weight

- 120 Lbs. assembled
- 165 Lbs. shipping weight

Doors

- 2, secured by three point locking system
- Locks via customer supplied padlock
- Sealed with rubber filled gaskets

Material

- .125" Alumiflex™
- RF properties: Non-ferrous

Racking Specifications

Rails

- 4 standard EIA 19" rack cage (for additional rails see accessories)
- Alodine coated
- Holes tapped for 10-32 threads
- .125" Material (Alumiflex™)

Spacing

- 19" EIA standard

Useable Height

- Height: 30.625"

Distance between front/rear rail:

- 20"

Ratings

NEMA Class Types available

- Class 250 Type 3R, 4X

Door Opening Clearance

Height

- 32.75"

Width

- 22"

Exterior Cabinet Dimensions

Handles

- Protrude 1.875"

Total Space Occupied

- Width: 24.5"
- Height: 38.625"
- Depth: 26.75"

TR-336XL-WAL

(17 RU) Traffic Enclosures



General

Weight

- 180 Lbs. assembled
- 225 Lbs. shipping weight

Doors

- 2, secured by three point locking system
- Locks via customer supplied padlock
- Sealed with rubber filled gaskets

Material

- .125" Alumiflex™
- RF properties: Non-ferrous

Racking Specifications

Rails

- 4 standard EIA 19" rack cage (for additional rails see accessories)
- Alodine coated
- Holes tapped for 10-32 threads
- .125" Material (Alumiflex™)

Spacing

- 19" EIA standard

Useable Height

- Height: 30.625"

Distance between front/rear rail:

- 20"

Mounting Tray

- Slide Out Tray

Ratings

NEMA Class Types available

- Class 250 Type 3R, 4X

Door Opening Clearance

Height

- 32.75"

Width

- 22"

Exterior Cabinet Dimensions

Handles

- Protrude 1.875"

Total Space Occupied

- Height: 38.625"
- Width: 24.5"
- Depth: 26.75"



TR-336XL-BAS-1

(17 RU) Traffic Enclosures



General

Weight

- 140 Lbs. assembled
- 200 Lbs. shipping weight

Doors

- 2, secured by three point locking system
- Locks via customer supplied padlock
- Sealed with rubber filled gaskets

Material

- .125" Alumiflex™
- RF properties: Non-ferrous

Finish

- Flat Aluminum

Racking Specifications

Rails

- 4 standard EIA 19" rack cage (for additional rails see accessories)
- Alodine coated
- Holes tapped for 10-32 threads
- .125" Material (Alumiflex™)

Spacing

- 19" EIA standard

Useable Height

- Height: 30.625"

Distance between front/rear rail:

- 20"

Ratings

NEMA Class Types available

- Class 250 Type 3R, 4X

Door Opening Clearance

Height

- 32.75"

Width

- 22"

Exterior Cabinet Dimensions

Handles

- Protrude 1.875"

Total Space Occupied

- Height: 38.625"
- Width: 25.5"
- Depth: 26.75"

TR-346XL

(20 RU) Traffic Enclosures



General

Weight

- 120 Lbs. assembled
- 165 Lbs. shipping weight

Doors

- 2, secured by three point locking system
- Locks via customer supplied padlock
- Sealed with rubber filled gaskets

Material

- .125" Alumiflex™
- RF properties: Non-ferrous

Finish

- Flat aluminum

Racking Specifications

Rails

- 4 standard EIA 19" rack cage (for additional rails see accessories)
- Alodine coated
- Holes tapped for 10-32 threads
- .125" Material (Alumiflex™)

Spacing

- 19" EIA standard

Useable Height

- Height: 35"

Distance between front/rear rail:

- 15.75"

Ratings

NEMA Class Types available

- Class 250 Type 3R, 4X

Door Opening Clearance

Height

- 42.75"

Width

- 22"

Exterior Cabinet Dimensions

Handles

- Protrude 1.875"

Total Space Occupied

- Height: 49"
- Width: 24.5"
- Depth: 26.75"

ST-30D

30" H x 17" D (17 RU) Indoor Enclosure



General

Weight

- 48 Lbs.

Doors

- 2, secured with non-intrusion locks
- Locks and unlocks with supplied set of keys
- Designed to mount, either left or right

Material

- .1" Alumiflex™

- Finish: Painted cream

- RF properties: Non-ferrous

Vents

- 2 – 8" X 10" standard filter panel housings
- One removable filter panel per door
- Solid panels can be used for non-ventilation

Access Holes

- 4 – 1" hole with hole plug installed

Racking Specifications

Rails

- One set standard (for additional rails see accessories)
- Alodine coated
- Holes tapped for 10-32 threads
- Each rail supported by two R-STRUTS™
- .125" Material (Alumiflex™)

Spacing

- 19" EIA standard

Useable Height

- 30"

Useable Depth

- Maximum: 16.6875"
- Minimum: 14.9375"

Inside Clearance - Less Rails

Height

- 30"

Width

- 21"

Depth

- See racking specifications – Useable depth

Ratings

NEMA Class Types available

- Class 250 Type 2

Paint Tested

- 1000 Hour salt spray
- 1000 Hour immersion

Door Opening Clearance

Height

- 26.75"

Width

- 19.25"

Exterior Cabinet Dimensions

Main Body

- Width: 23.25"
- Height: 30.25"
- Depth: 17.25"

Screws

- Protrude .1875" on each side

Total Space Occupied

- Width: 23.625"
- Height: 30.25"
- Depth: 17.375"

	*Section Starting & Ending Points	Vertical Height Per section	Effective Depth For Each Section
Top	28.32" – 30.00"	1.68"	14 15/16"
	19.00" – 28.32"	15.32"	16 11/16"
Center	11.00" – 19.00"	8.00"	16 3/16"
	1.68" – 11.00"	15.32"	16 11/16"
Bottom	0.00" – 1.68"	1.68"	14 15/16"

ST-30DX

30" H x 25" D (17 RU) Indoor Enclosure



General

Weight

- 53 Lbs.

Doors

- 2, secured with non-intrusion locks
- Locks and unlocks with supplied set of keys
- Designed to mount, either left or right

Material

- .1" Alumiflex™

- Finish: Painted cream
- RF properties: Non-ferrous

Vents

- 2 – 8" x 10" standard filter panel housings
- One removable filter panel per door
- Solid panels can be used for non-ventilation

Access Holes

- 4 – 1" hole with hole plug installed

Racking Specifications

Rails

- Two standard (for additional rails see accessories)
- Alodine coated
- Holes tapped for 10-32 threads
- Each rail supported by two R-STRUTS™
- .125" Material (Alumiflex™)

Spacing

- 19" EIA standard

Useable Height

- 30"

Useable Depth

- Maximum: 24.6875"
- Minimum: 22.9375"

Inside Clearance - Less Rails

Height

- 30"

Width

- 21"

Depth

- See racking specifications – Useable depth

Ratings

NEMA Class Types available

- Class 250 Type 2

Paint Tested

- 1000 Hour salt spray
- 1000 Hour immersion

Door Opening Clearance

Height

- 26.75"

Width

- 19.5"

Exterior Cabinet Dimensions

Main Body

- Height: 30.25"
- Width: 23.25"
- Depth: 25.25"

Screws

- Protrude .1875" on each side

Total Space Occupied

- Width: 23.625"
- Height: 30.25"
- Depth: 25.375"

	*Section Starting & Ending Points	Vertical Height Per section	Effective Depth For Each Section
Top	28.32" – 30.00"	1.68"	22 15/16"
	19.00" – 28.32"	9.32"	24 11/16"
Center	11.00" – 19.00"	8.00"	24 3/16"
	1.68" – 11.00"	9.32"	24 11/16"
Bottom	0.00" – 1.68"	1.68"	22 15/16"

ST-30DD

30" H x 34" D (33 RU) Indoor Enclosure



General

Weight

- 69 Lbs.

Doors

- 2, secured with non-intrusion locks
- Locks and unlocks with supplied set of keys
- Designed to mount, either left or right

Material

- .1" Alumiflex™
- Finish: Painted cream
- RF properties: Non-ferrous

Vents

- 2 – 8" X 10" standard filter panel housings
- One removable filter panel per door
- Solid panels can be used for non-ventilation

Access Holes

- 4 – 1" hole with hole plug installed

Racking Specifications

Rails

- Four standard (for additional rails see accessories)
- Alodine coated
- Holes tapped for 10-32 threads
- Each rail supported by two R-STRUTS™
- .125" Material (Alumiflex™)

Spacing

- 19" EIA standard

Useable Height

- 30"

Useable Depth

- Maximum: 33.6875"
- Minimum: 31.9375"

Inside Clearance - Less Rails

Height

- 30"

Width

- 21"

Depth

- See racking specifications – Useable depth

Ratings

NEMA Class Types available

- Class 250 Type 2

Paint Tested

- 1000 Hour salt spray
- 1000 Hour immersion

Door Opening Clearance

Height

- 26.75"

Width

- 19.5"

Exterior Cabinet Dimensions

Main Body

- Height: 30.25"
- Width: 23.25"
- Depth: 34.25"

Screws

- Protrude .1875" on each side

Total Space Occupied

- Height: 30.25"
- Width: 23.625"
- Depth: 34.375"

	*Section Starting & Ending Points	Vertical Height Per section	Effective Depth For Each Section
Top	28.32" – 30.00"	1.68"	31 15/16"
	19.00" – 28.32"	9.32"	33 11/16"
Center	11.00" – 19.00"	8.00"	33 3/16"
	1.68" – 11.00"	9.32"	33 11/16"
Bottom	0.00" – 1.68"	1.68"	14 15/16"

ST-42D

42" H x 17" D (23 RU) Indoor Enclosure



General

Weight

- 48 Lbs.

Doors

- 2, secured with non-intrusion locks
- Locks and unlocks with supplied set of keys
- Designed to mount, either left or right

Material

- .1" Alumiflex™

- Finish: Painted cream
- RF properties: Non-ferrous

Vents

- 2 – 8" x 10" standard filter panel housings
- One removable filter panel per door
- Solid panels can be used for non-ventilation

Access Holes

- 4 – 1" hole with hole plug installed

Racking Specifications

Rails

- Two standard (for additional rails see accessories)
- Alodine coated
- Holes tapped for 10-32 threads
- Each rail supported by two R-STRUTS™
- .125" Material (Alumiflex™)

Spacing

- 19" EIA standard

Useable Height

- 41.75"

Useable Depth

- Maximum: 16.6875"
- Minimum: 14.9375"

Inside Clearance - Less Rails

Width

- 21"

Height

- 42"

Depth

- See racking specifications – Useable depth

Ratings

NEMA Class Types available

- Class 250 Type 2

Paint Tested

- 1000 Hour salt spray
- 1000 Hour immersion

Door Opening Clearance

Height

- 38.75"

Width

- 19.5"

Exterior Cabinet Dimensions

Main Body

- Height: 42.25"
- Width: 23.25"
- Depth: 17.25"

Screws

- Protrude 3/16" on each side

Total Space Occupied

- Height: 42.25"
- Width: 23.625"
- Depth: 17.375"

	*Section Starting & Ending Points	Vertical Height Per section	Effective Depth For Each Section
Top	40.32" – 42.00"	1.68"	14 15/16"
	25.00" – 40.32"	15.32"	16 11/16"
Center	17.00" – 25.00"	8.00"	16 3/16"
	1.68" – 17.00"	15.32"	16 11/16"
Bottom	0.00" – 1.68"	1.68"	14 15/16"

ST-42DX

42" H x 34" D (23 RU) Indoor Enclosure



General

Weight

- 70 Lbs.

Doors

- 2, secured with non-intrusion locks
- Locks and unlocks with supplied set of keys
- Designed to mount, either left or right

Material

- .1" Alumiflex™

- Finish: Painted cream
- RF properties: Non-ferrous

Vents

- 2 – 8" x 10" standard filter panel housings
- One removable filter panel per door
- Solid panels can be used for non-ventilation

Access Holes

- 4 – 1" hole with hole plug installed

Racking Specifications

Rails

- Two standard (for additional rails see accessories)
- Alodine coated
- Holes tapped for 10-32 threads
- Each rail supported by two R-STRUTS™
- .125" Material (Alumiflex™)

Spacing

- 19" EIA standard

Useable Height

- 41.75"

Useable Depth

- Maximum: 24.6875"
- Minimum: 22.9375"

Inside Clearance - Less Rails

Height

- 42"

Width

- 21"

Depth

- See racking specifications – Useable depth

Ratings

NEMA Class Types available

- Class 250 Type 2

Paint Tested

- 1000 Hour salt spray
- 1000 Hour immersion

Door Opening Clearance

Height

- 38.75"

Width

- 19.5"

Exterior Cabinet Dimensions

Main Body

- Height: 42.25"
- Width: 23.25"
- Depth: 17.25"

Screws

- Protrude .1875" on each side

Total Space Occupied

- Height: 42.25"
- Width: 23.625"
- Depth: 25.375"

	*Section Starting & Ending Points	Vertical Height Per section	Effective Depth For Each Section
Top	28.32" – 30.00"	1.68"	31 15/16"
	19.00" – 28.32"	9.32"	33 11/16"
Center	11.00" – 19.00"	8.00"	33 3/16"
	1.68" – 11.00"	9.32"	33 11/16"
Bottom	0.00" – 1.68"	1.68"	14 15/16"

ST-42DD

42" H x 17" D (23 RU) Indoor Enclosure



General

Weight

- 95 Lbs.

Doors

- 2, secured with non-intrusion locks
- Locks and unlocks with supplied set of keys
- Designed to mount, either left or right

Material

- .1" Alumiflex™
- Finish: Cream, textured, powder baked on paint
- RF properties: Non-ferrous

Vents

- 2 – 8" x 10" standard filter panel housings
- One removable filter panel per door
- Solid panels can be used for non-ventilation

Access Holes

- 4 – 1" hole with hole plug installed

Racking Specifications

Rails

- Four standard (for additional rails see accessories)
- Alodine coated
- Holes tapped for 10-32 threads
- Each rail supported by two R-STRUTS™
- .125" Material (Alumiflex™)

Spacing

- 19" EIA standard

Useable Height

- 41.75"

Useable Depth

- Maximum: 33.6875"
- Minimum: 31.9375"

Inside Clearance - Less Rails

Height

- 42"

Width

- 21"

Depth

- See racking specifications – Useable depth

Ratings

NEMA Class Types available

- Class 250 Type 2

Paint Tested

- 1000 Hour salt spray
- 1000 Hour immersion

Door Opening Clearance

Height

- 38.75"

Width

- 19.5"

Exterior Cabinet Dimensions

Main Body

- Height: 42.25"
- Width: 23.25"
- Depth: 34.25"

Screws

- Protrude .1875" on each side

Total Space Occupied

- Height: 42.25"
- Width: 23.625"
- Depth: 34.375"

	*Section Starting & Ending Points	Vertical Height Per section	Effective Depth For Each Section
Top	40.32" – 42.00"	1.68"	14 15/16"
	25.00" – 40.32"	15.32"	16 11/16"
Center	17.00" – 25.00"	8.00"	16 3/16"
	1.68" – 17.00"	15.32"	16 11/16"
Bottom	0.00" – 1.68"	1.68"	14 15/16"

ZZ-ST-62DXB

62" H x 25" D Indoor Enclosure



General

Weight

- 120 Lbs.

Doors

- 2, secured with non-intrusion locks
- Locks and unlocks with supplied set of keys
- Designed to mount, either left or right

Material

- .1" Alumiflex™
- Finish: Cream, textured, powder baked on paint
- RF properties: Non-ferrous

Vents

- 2 – 8" x 10" standard filter panel housings
- One removable filter panel per door
- Solid panels can be used for non-ventilation

Access Holes

- 4 – 1" hole with hole plug installed

Racking Specifications

Rails

- One standard (for additional rails see accessories)
- Alodine coated
- Holes tapped for 10-32 threads
- Each rail supported by two R-STRUTS™
- .125" Material (Alumiflex™)

Spacing

- 19" EIA standard

Useable Height

- 62"

Useable Depth

- Maximum: 24.6875"
- Minimum: 22.3125"

Inside Clearance - Less Rails

Height

- 62"

Width

- 21"

Depth

- See racking specifications – Useable depth

Ratings

NEMA Class Types available

- Class 250 Type 2

Paint Tested

- 1000 Hour salt spray
- 1000 Hour immersion

Door Opening Clearance

Height

- 58.75"

Width

- 19.5"

Exterior Cabinet Dimensions

Main Body

- Height: 62.25"
- Width: 23.25"
- Depth: 25.25"

Screws

- Protrude 3/16" on each side

Total Space Occupied

- Height: 62.25"
- Width: 23.625"
- Depth: 25.375"



	*Section Starting & Ending Points	Vertical Height Per section	Effective Depth For Each Section
Top	40.32" – 42.00"	1.68"	22 15/16"
	25.00" – 40.32"	15.32"	24 11/16"
Center	17.00" – 25.00"	8.00"	24 3/16"
	1.68" – 17.00"	15.32"	24 11/16"
Bottom	0.00" – 1.68"	1.68"	22 15/16"

SY-32DXL

32" H x 23" W x 25" D (18 RU) Indoor Enclosure



General

Weight

- 90 Lbs. assembled
- 145 Lbs. shipping weight

Doors

- Front door has framed see thru .25" Lexan
- Rear door is Alumiflex™ construction, both doors have lift off hinges
- 5" plenum below rear door has removable access plates for cable entries

Handles

- 2 - 5" spring loaded handles one on each side of cabinet.

Racking Specifications

Rails

- Two sets standard (for additional rails see accessories)
- Alodine coated
- Holes tapped for 10-32 threads
- Each rail supported by two R-STRUTS™
- .125" Material (Alumiflex™)

Spacing

- 19" EIA standard

Useable Depth

- Maximum: 21.5"
- Minimum: 19.75"

Ratings

NEMA Class Types available

- Class 250 Type 2

Paint Tested

- 1000 Hour salt spray
- 1000 Hour immersion

Inside Clearance - Less Rails

- Height: 32"
- Width: 23"
- Depth: 25"

Exterior Cabinet Dimensions

Main Body

- Height: 32.25"
- Width: 23.25"
- Depth: 25.25"

Screws

- Protrude .1875" on each side

Total Space Occupied

- Height: 32.25"
- Width: 23.625"
- Depth: 25.375"

Comes standard with:

- 2 - Perforated Mounting Shelf's
- 110V Fan Kit w/ Thermostat

SY-42DXL

42" H x 23" W x 25" D (23 RU) Indoor Enclosure



General

Weight

- 100 Lbs. assembled
- 150 Lbs. shipping weight

Doors

- Front door has framed see thru .25" Lexan
- Rear door is Alumiflex™ construction, both doors have lift off hinges
- 5" plenum below rear door has removable access plates for cable entries

Handles

- 2 - 5" spring loaded handles one on each side of cabinet.

Racking Specifications

Rails

- Two Sets standard (for additional rails see accessories)
- Alodine coated
- Holes tapped for 10-32 threads
- Each rail supported by two R-STRUTS™
- .125" Material (Alumiflex™)

Spacing

- 19" EIA standard

Useable Depth

- Maximum: 21.5"
- Minimum: 19.75"

Comes standard with:

- 2 - Perforated Mounting Shelf's
- 110V Fan Kit w/ Thermostat

Ratings

NEMA Class Types available

- Class 250 Type 4

Paint Tested

- 1000 Hour salt spray
- 1000 Hour immersion

Inside Clearance - Less Rails

- Height: 42"
- Width: 23"
- Depth: 25"

Door Opening Clearance

Height

- 38.75"

Width

- 19.5"

Exterior Cabinet Dimensions

Main Body

- Height: 42.25"
- Width: 23.625"
- Depth: 25.625"

Screws

- Protrude .1875" on each side

	*Section Starting & Ending Points	Vertical Height Per section	Effective Depth For Each Section
Top	40.32" – 42.00"	1.68"	22 15/16"
	25.00" – 40.32"	15.32"	24 11/16"
Center	17.00" – 25.00"	8.00"	24 3/16"
	1.68" – 17.00"	15.32"	24 11/16"
Bottom	0.00" – 1.68"	1.68"	22 15/16"

SY-50DXL

50" H x 23" W x 25" D (28 RU) Indoor Enclosure



General

Weight

- 105 Lbs. assembled
- 155 Lbs. shipping weight

Doors

- Front door has framed see thru .25" Lexan
- Rear door is Alumiflex™ construction, both doors have lift off hinges
- 5" plenum below rear door has removable access plates for cable entries

Handles

- 2 - 5" spring loaded handles one on each side of cabinet

Racking Specifications

Rails

- Two sets standard (for additional rails see accessories)
- Alodine coated
- Holes tapped for 10-32 threads
- Each rail supported by two R-STRUTS™
- .125" Material (Alumiflex™)

Spacing

- 19" EIA standard

Useable Depth

- Maximum: 21.5"
- Minimum: 19.75"

Comes standard with:

- 2 - Perforated Mounting Shelf's
- 110V Fan Kit w/ Thermostat

Ratings

NEMA Class Types available

- Class 250 Type 4

Paint Tested

- 1000 Hour salt spray
- 1000 Hour immersion

Inside Clearance - Less Rails

- Height: 50"
- Width: 23"
- Depth: 25"

Exterior Cabinet Dimensions

Main Body

- Width: 23"
- Height: 50"
- Depth: 25"

Total Space Occupied

- Height: 50.25"
- Width: 23.625"
- Depth: 25.625"

Screws

- Protrude .1875" on each side

SY-72DXL

72" H x 23" W x 25" D (40 RU) Indoor Enclosure



General

Weight

- 140 Lbs. assembled
- 185 Lbs. shipping weight

Doors

- Front door has framed see thru .25" Lexan
- Rear door is Alumiflex™ construction, both doors have lift off hinges
- 5" plenum below rear door has removable access plates for cable entries

Handles

- 2 - 5" spring loaded handles one on each side of cabinet.

Racking Specifications

Rails

- Two Sets standard (for additional rails see accessories)
- Alodine coated
- Holes tapped for 10-32 threads
- Each rail supported by two R-STRUTS™
- .125" Material (Alumiflex™)

Spacing

- 19" EIA standard

Useable Depth

- Maximum: 21.5"
- Minimum: 19.75"

Comes standard with:

- 2 - Perforated Mounting Shelf's
- 110V Fan Kit w/ Thermostat

Ratings

NEMA Class Types available

- Class 250 Type 2

Paint Tested

- 1000 Hour salt spray
- 1000 Hour immersion"

Exterior Cabinet Dimensions

Main Body

- Width: 23"
- Height: 72"
- Depth: 25"



SB-14127

14" H x 12" W x 7" D Small Outdoor Enclosure



General

Weight

- 13 Lbs.

Doors

- Secured with 2 quarter turns with key
- Sealed with aluminum filled gaskets

Material

- .125" Alumiflex™
- RF properties: Non-ferrous

Vents

- None: Air tight, utilizing a solid construction = vent can be installed @ customer request
- Ventilation to be provided by customer if desired
- Using our Alumiflex™ material, vents & access

Plate

- Inside Removable Aluminum Plate 12 H x 10" W

Mounting

- 4" Mounting Tabs Top and Bottom
- 2 - .5" holes in each for mounting

Ratings

NEMA Class Types available

- NEMA 3R (Vented), NEMA 4 (closed loop-a/c), NEMA 4X

Paint Tested

- 1000 Hour salt spray
- 1000 Hour immersion

Exterior Cabinet Dimensions

Main Body

- Height: 14"
- Width: 12"
- Depth: 7"

OSVP-14127

14" H x 12" W x 7" D Small Outdoor Enclosure



General

Weight

- 16 Lbs.

Doors

- Secured with 2 quarter turns with key
- Sealed with aluminum filled gaskets

Vent

- 7 vents on top and 7 vents on bottom
- 14 vents in Door Total Vents are filtered with Nylon Screen

Mounting

- 4" Mounting Tabs Top and Bottom with
- 2 - .5" holes in each for mounting

Inside Specs

Plate

- Inside Removable Aluminum Plate 12 H x 10" W
- Plate is Unpainted and removable for easy customer access

Mounting

- 4" Mounting Tabs Top and Bottom
- 2 - .5" holes in each for mounting

Ratings

NEMA Class Types available

- Class 250 Type 4 or 4 X

Paint Tested

- 1000 Hour salt spray
- 1000 Hour immersion

Exterior Cabinet Dimensions

Main Body

- Height: 14"
- Width: 12"
- Depth: 7"

Kit comes with:

- 110 CFM 110V Fan Kit with Thermostat
- 100 Watt Flex Heater (On 45° F, Off 55° F)

SVP-18168

18" H x 16" W x 8" D Small Outdoor Enclosure



General

Weight

- 13 Lbs.

Doors

- Secured with 2 Pad Locking Hasps
- Sealed with .875" aluminum filled gaskets

Material

- .125" Alumiflex™
- RF properties: Non-ferrous

Vents

- Poly Filtered for Air Intake and Exhaust

Mounting

- New Revised Full Top and Bottom Mounting Tabs

Plate

- Inside Removable Aluminum Plate 16 H x 6" W

Ratings

NEMA Class Types available

- Class 250 Type 4

Paint Tested

- 1000 Hour salt spray
- 1000 Hour immersion

Exterior Cabinet Dimensions

Main Body

- Height: 18"
- Width: 16"
- Depth: 8"



OSVP-18168

18" H x 16" W x 8" D Small Outdoor Enclosure



General

Weight

- 16 Lbs.

Doors

- Secured with 2 Pad Locking Hasps
- Sealed with .875" aluminum filled gaskets

Material

- .125" Alumiflex™
- RF properties: Non-ferrous

Vents

- Poly Filtered for Air Intake
- Poly Filter Fan for Exhaust Using our Alumiflex™ material, vents & access

Mounting

- New Revised Full Top and Bottom Mounting Tabs

Plate

- Inside Removable Aluminum Plate 16 H x 6" W

Ratings

NEMA Class Types available

- Class 250 Type 4

Paint Tested

- 1000 Hour salt spray
- 1000 Hour immersion

Exterior Cabinet Dimensions

Main Body

- Height: 18"
- Width: 16"
- Depth: 8"

Kit comes with:

- 110 CFM 110V Fan Kit with Thermostat
- 100 Watt Flex Heater (On 45° F, Off 55° F)



SB-18188AL

18" H x 18" W x 8" D Small Outdoor Enclosure



General

Weight

- 35 Lbs.

Doors

- Secured with a 2 quarter turns with key
- Sealed with .875" aluminum filled gaskets

Material

- .125" Alumiflex™
- RF properties: Non-ferrous

Vents

- Filtered air intake and exhaust

Mounting

- TR Style pole mounting brackets

Plate

- Inside Removable Plywood Plate
16 H x 6" W

Ratings

NEMA Class Types available

- Class 250 Type 4 or 4X

Exterior Cabinet Dimensions

Main Body

- Height: 18"
- Width: 16"
- Depth: 8"

Kit comes with:

- 110 CFM 110V Fan Kit with Thermostat

SB-24168

24" H x 16" W x 8" D Small Outdoor Enclosure



General

Weight

- 25 Lbs.

Doors

- Secured with a 2 quarter turns with key
- Sealed with .875" aluminum filled gaskets

Material

- .125" Alumiflex™
- RF properties: Non-ferrous

Vents

- None: Air tight, utilizing a solid construction = vent can be installed @ customer request
- Ventilation to be provided by customer if desired
- Using our Alumiflex™ material, vents & access

Plate

- Inside Removable Aluminum Plate 22 H x 14" W

Ratings

NEMA Class Types available

- NEMA 3R (Vented), NEMA 4 (closed loop-a/c), NEMA 4X

Paint Tested

- 1000 Hour salt spray
- 1000 Hour immersion

Exterior Cabinet Dimensions

Main Body

- Height: 24"
- Width: 16"
- Depth: 8"



SBPLY-24168

24" H x 16" W x 8" D Small Outdoor Enclosure



General

Weight

- 25 Lbs.

Doors

- Secured with 2 Pad Locking Hasps
- Sealed with .875" aluminum filled gaskets

Material

- .125" Alumiflex™
- RF properties: Non-ferrous

Vents

- None: Air tight, utilizing a solid construction = vent can be installed @ customer request
- Ventilation to be provided by customer if desired
- Using our Alumiflex™ material, vents & access

Plate

- Inside Removable Plywood Plate 22" H x 14" W

Ratings

NEMA Class Types available

- NEMA 3R (Vented), NEMA 4 (closed loop-a/c), NEMA 4X

Paint Tested

- 1000 Hour salt spray
- 1000 Hour immersion

Exterior Cabinet Dimensions

Main Body

- Height: 24"
- Width: 16"
- Depth: 8"



SBPLY-262210

24" H x 22" W x 10" D Small Outdoor Enclosure



General

Weight

- 35 Lbs.

Doors

- Secured with a 2 quarter turns with key
- Sealed with .875" aluminum filled gaskets

Material

- .125" Alumiflex™
- RF properties: Non-ferrous

Vents

- None: Air tight, utilizing a solid construction = vent can be installed @ customer request
- Ventilation to be provided by customer if desired
- Using our Alumiflex™ material, vents & access

Plate

- Inside Removable Plywood Plate
24" H x 20" W

Ratings

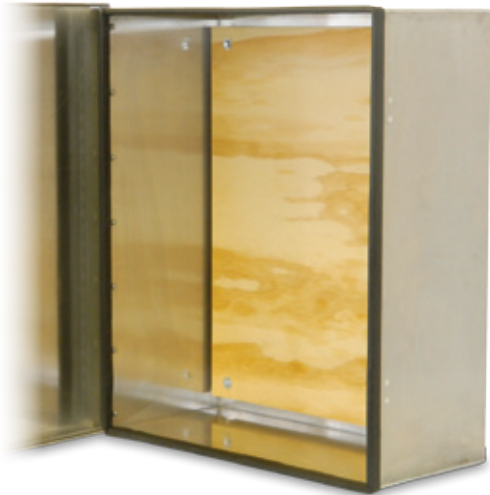
NEMA Class Types available

- NEMA 3R (Vented), NEMA 4 (closed loop-a/c), NEMA 4X

Exterior Cabinet Dimensions

Main Body

- Height: 26"
- Width: 22"
- Depth: 10"



SB-262210-C

26" H x 22" W x 10" D Small Outdoor Enclosure



General

Weight

- 35 Lbs.

Doors

- Secured with a quarter turn lock
- Sealed with .875" aluminum filled gaskets

Material

- .125" Alumiflex™
- RF properties: Non-ferrous

Vents

- None: Air tight, utilizing a solid construction = vent can be installed @ customer request
- Ventilation to be provided by customer if desired
- Using our Alumiflex™ material, vents & access

Plate

- Inside Removable Plywood Plate
24" H x 20" W

Ratings

NEMA Class Types available

- NEMA 3R (Vented), NEMA 4 (closed loop-a/c), NEMA 4X

Paint Tested

- 1000 Hour salt spray
- 1000 Hour immersion

Exterior Cabinet Dimensions

Main Body

- Height: 26"
- Width: 22"
- Depth: 10"



SVP-302410

30" H x 24" W x 10" D Small Outdoor Enclosure



General

Weight

- 35 Lbs. / SVP and 45 Lbs. / SBP

Doors

- Sealed with .875" aluminum filled gaskets
- Filtered vent louvers

Material

- .125" Alumiflex™
- RF properties: Non-ferrous

Vents

- Poly Filtered for Air Intake
- Screen Filter for Exhaust

Plate

- Inside Removable Aluminum Plate 28" H x 22" W

Mounting Tabs

- Top Tab: 5"
- Bottom Tab: 3"

Optional Fan

- 115V AC Muffin Fan w/ Adjustable Thermostat (SBP Model Only)

Optional Heater

- 300 Watt Flex Heater Installed (SBP Model Only)

Ratings

NEMA Class Types available

- Class 250 Type 4

Paint Tested

- 1000 Hour salt spray
- 1000 Hour immersion

Exterior Cabinet Dimensions

Main Body

- Height: 30"
- Width: 24"
- Depth: 10"



OSVP-302410

30" H x 24" W x 10" D Small Outdoor Enclosure



General

Weight

- 35 Lbs. / SVP and 45 Lbs. / SBP

Doors

- Sealed with .875" aluminum filled gaskets
- Filtered vent louvers

Material

- .125" Alumiflex™
- RF properties: Non-ferrous

Vents

- Poly Filtered for Air Intake
- Screen Filter for Exhaust

Plate

- Inside Removable Aluminum Plate 28" H x 22" W

Mounting Tabs

- Top Tab: 5"
- Bottom Tab: 3"

Fan

- 115V AC Muffin Fan w/ Adjustable Thermostat (SBP Model Only)

Heater

- 300 Watt Flex Heater Installed (SBP Model Only)

Features

- 110 CFM 110V Fan Kit with Thermostat
- 300 Watt Flex Heater (On 45, Off 55)

Racking Specifications

Standard

- Removable Inside Aluminum Back Plate

Ratings

NEMA Class Types available

- Class 250 Type 4

Paint Tested

- 1000 Hour salt spray
- 1000 Hour immersion

Exterior Cabinet Dimensions

Main Body

- Height: 30"
- Width: 24"
- Depth: 10"

WCU-B14

14" H X 14" W X 14" D Small Outdoor Enclosure



General

Weight

- 21 Lbs.

Material

- .125" Alumiflex™
- RF properties: Non-ferrous

Vents

- Battery section: Has four vent louvers in bottom
- Radio section: None
- I/O section: None

Top Lid & Front Door

- Secured with a hasp locking system
- Locks via customer supplied padlock
- Sealed with aluminum filled gasket

Mounting

- Four 5/16" holes provided for wall mounting

Center Divider Wall (Power feed thru)

- Has two 1/4" holes in the top of wall, which provide access for two bolts and two rubber grommets. These allow your battery + & - to be passed thru from the battery section to the radio section



Racking Specifications

Standard

- The width on most desktop repeaters are small enough to where they will sit right down inside this unit

Ratings

NEMA Class Types available

- Class 250 Type 4

Paint Tested

- 1000 Hour salt spray
- 1000 Hour immersion

Exterior Cabinet Dimensions

Main Body

- Height: 14"
- Width: 14"
- Depth: 14"

WCU-P16

16" H x 16" W x 16" D Small Outdoor Enclosure



General

Weight

- 20 Lbs.

Doors

- Sealed with .875" aluminum filled gaskets

Material

- .125" Alumiflex™
- RF properties: Non-ferrous

Features

- Hinged Padlocking Top Lid
- Wireless Control Unit

Racking Specifications

Standard

- The width on most desktop repeaters are small enough to where they will sit right down inside this unit

Ratings

NEMA Class Types available

- Class 250 Type 4, 4X

Paint Tested

- 1000 Hour salt spray
- 1000 Hour immersion

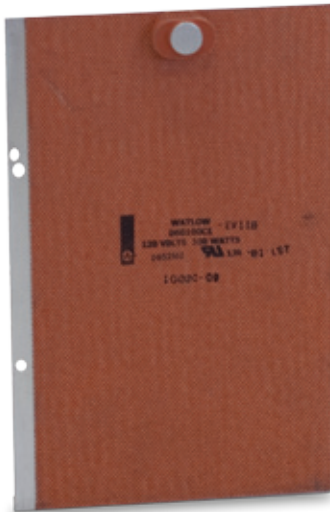
Exterior Cabinet Dimensions

Main Body

- Height: 16"
- Width: 16"
- Depth: 16"

Climate Control

Heating Options



HT Series Heaters – Rugged, yet thin, lightweight and flexible. The use of Watlow silicone rubber heaters is limited only by your imagination. With these heaters, you can put the heat where it's needed and in the process, improve heat transfer, speed warm-ups, and decrease wattage requirements.

Fiberglass-reinforced silicone rubber gives your heater dimensional stability without sacrificing flexibility because very little material separates the element from the part. Heat transfer is rapid and efficient.



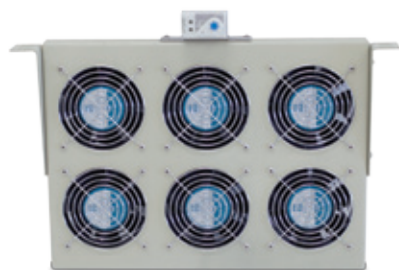
HVL Series Heaters – Small, compact size fan heater. Maintains minimum operating temperatures in enclosures. Helps to prevent failure of electronic components caused by condensation and corrosion.

- Built-in overheat protection
- Heater can be purchased separately for OEM use
- DIN Rail mountable

Part #	Description
HT-100	100 Watt 115V AC Flex, 5"h x 4.5"w
HT-300	300 Watt 115V AC Flex, 10.5"h x 6.5"w
HT-600	600 Watt 115V AC Flex, 20"h x 6.5"w
HT-600/48	600 Watt 48V DC Flex, 20"h x 6.5"w
HVL-126	400 Watt Fan Heater 110 Volt
HVL-236	400 Watt Fan Heater 230 Volt
HVL-126T	400 Watt Fan Heater 110 Volt w/ Thermostat
HVL-236T	400 Watt Fan Heater 230 Volt w/ Thermostat

Climate Control

Fan Kits



SMT-FT6

19" FAN TRAY

Part #	Description
SMT-FT3	330 CFM 110V Fan Kit Tray for 19" Rack w/Adjustable Thermostat 6"D, Single Racking
SMT-FT6	660 CFM 110V Fan Kit Tray for 19" Rack w/Adjustable Thermostat 17"D, Single Racking
SMT-FT9	990 CFM 110V Fan Kit Tray for 19" Rack w/Adjustable Thermostat 17"D, Dual Racking



220 CFM Fan Kit
Comes with 2 – 5" Fans
and Adjustable Thermostat



110 CFM Fan Kit
Comes with 1 – 5" Fan
and Adjustable Thermostat

DFMP-168

16" X 8" Fan & Inlet Panel Plate
Kit w/ Dual Fans w/ Thermostat

AC & DC Fan Kits

Part #	Description
DFMP-168	16"X 8" Fan & Inlet Panel Plate Kit
F-25-115T	220 CFM, 115V Fan Kit, w/ thermostat
F-25-115	115V, 220 CFM Fan Kit Less Thermostat
F-25-220T	2 – 220 Volt 220 CFM Fan Kit with Thermostat
F-25-220	2 – 220 Volt 220 CFM Fan Kit without Thermostat
F-25-48T	2 – 48 Volt 220 CFM Fan Kit with Thermostat
F-25-48	2 – 48 Volt 220 CFM Fan Kit without Thermostat
F-25-24T	2 – 24 Volt 220 CFM Fan Kit with Thermostat
F-25-24	2 – 24 Volt 220 CFM Fan Kit without Thermostat
F-25-12T	2 – 12 Volt 220 CFM Fan Kit with Thermostat // 1 AMP
F-25-12	2 – 12 Volt 220 CFM Fan Kit without Thermostat // 1 AMP
F-15-115T	1 – 115 Volt 110 CFM Fan Kit with Thermostat
F-15-115	1 – 115 Volt 110 CFM Fan Kit without Thermostat
F-15-220T	1 – 220 Volt 110 CFM Fan Kit with Thermostat
F-15-220	1 – 220 Volt 110 CFM Fan Kit without Thermostat
F-15-48T	1 – 48 Volt 110 CFM Fan Kit with Thermostat
F-15-48	1 – 48 Volt 110 CFM Fan Kit without Thermostat
F-15-24T	1 – 24 Volt 110 CFM Fan Kit with Thermostat
F-15-24	1 – 24 Volt 110 CFM Fan Kit without Thermostat
F-15-12T	1 – 12 Volt 110 CFM Fan Kit with Thermostat // .5 AMP
F-15-12	1 – 12 Volt 110 CFM Fan Kit without Thermostat // .5 AMP

Climate Control

48V Back-up Fan Unit



**500 CFM FREE AIR
@ 48V BUFU**

24"H x 12"W x 12.06"D

Introduction:

The Vent PAK has been designed to provide outside ventilation air flow through a computer or electronic equipment enclosure in the event of a power outage or air conditioner failure.

Sequence of Operation:

1. AC and DC power supplies are normal; enclosure temperature is below designated set point.

This is considered the “normal” condition, therefore the fan is not required to operate and the louvers remain in a closed position.

2. AC and DC Power supplies are normal, enclosure air temperature rises above the set point due to the possibility of air conditioner failure.

In this mode, the thermostat contacts open, the fan will operate and the louvers will open.

3. AC power supply fails; 48V DC power supply is normal. In this mode, the fan will operate and the louvers will open.

When the primary AC power supply is restored, the fan will stop operation, the louvers will close and the timer will energize. If after a factory set time period of 1000 seconds or 16.67 minutes (adjustable), the thermostat contact is closed, indicating a satisfactory enclosure temperature, the fan will remain off and the louvers will remain closed.

If after the factory set time period the thermostat contact is open, indicating an enclosure temperature above the thermostat set point, the fan will begin operation and the louvers will open.

Note: This timed output can be reset by momentarily interrupting power to the 48V DC power supply circuit. This will increase the time delay another 1000 seconds.

Climate Control

Air Conditioners



AC-2400



AC-4000

- Easy to use temperature control with alarm
- Durable 16 gauge welded steel construction
- Efficient, quiet, and long lasting rotary compressor
- CFC Free Refrigeration System
- Space saving aesthetic cabinet design
- 100% factory tested
- NEMA type 4 or 12 integrity
- Corrosion protection package available for harsh environments.

2 YEAR IN HOUSE WARRANTY

- 1st Year Parts and Labor,
- 2nd Year Parts

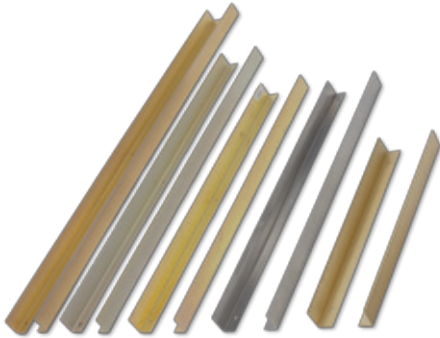
Part #	Description
AC-10001	13.12"H x 14.5"W x 8"D
AC-100012	13.12"H x 14.5"W x 8"D
AC-20001	24"H x 10"W x 10"D
AC-200012	24"H x 10"W x 10"D
AC-40001-H	30.10"H x 12.27"W x 8.34"D
AC-400012-H	30.10"H x 12.27"W x 8.34"D
AC-60001	35.97"H x 15.94"W x 7.35"D
AC-600012	35.97"H x 15.94"W x 7.35"D
AC-80001	42.10"H x 15.94"W x 10.35"D
AC-800012	42.10"H x 15.94"W x 10.35"D
AC-1000012	52.09"H x 17.65"W x 10.34"D
AC-1200012	52.09"H x 17.65"W x 10.34"D

DDB Enclosure & Recommended A/C Unit

- | | |
|--------------------------|--------------------------------|
| • OD-16DDC – A | A/C Notation & Size |
| • OD-30DXC – B | • A – 1,000 BTU |
| • OD-30DDC – B | • B – 2,400 BTU |
| • OD-50DXC – B, C, D | • C – 4,000 BTU |
| • OD-50DDC – C, D | • D – 5,500 BTU |
| • OD-50DDXC – D, E | • E – 6,000 BTU |
| • OD-62DXC – C, D | • F – 8,000 BTU |
| • OD-62DDC – C, D, E | • G – 10,000 BTU |
| • OD-62DDXC – D, E | • H – 12,000 BTU |
| • OD-78DXC – D, E, F | |
| • OD-78DDC – D, E, F | |
| • OD-78DDXC – D, E, F, G | |

Accessories

Rails



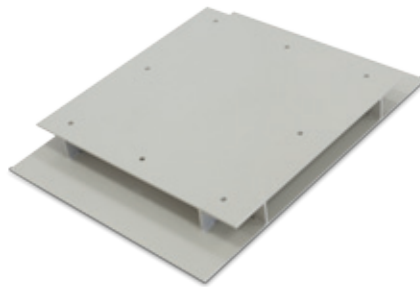
Part #	Description
PSR-2-10	PSOD Series - 9RU - 10" Rails, 19" Racking
PSR-2-30	PSOD Series - 16RU - 30" Rails, 19" Racking
R-2-16	OD-16 Series - 9RU - 30" Rails, 19" Racking
R-2-30	OD-30 Series - 16RU - 30" Rails, 19" Racking
R-2-50	OD-50 Series - 27RU - 50" Rails, 19" Racking
R-2-62	OD-62 Series - 34RU - 62" Rails, 19" Racking
R-2-78	OD-78 Series - 44RU - 78" Rails, 19" Racking
R-2-30-23	OD-30 Series - 16RU - 30" Rails, 23" Racking
R-2-50-23	OD-50 Series - 27RU - 50" Rails, 23" Racking
R-2-62-23	OD-62 Series - 34RU - 62" Rails, 23" Racking
R-2-78-23	OD-78 Series - 44RU - 78" Rails, 23" Racking
STR-2-30	ST-30 Series - 16RU - 30" Rails, 19" Racking
STR-2-42	ST-42 Series - 22RU - 42" Rails, 19" Racking

Bases for OD Series Enclosures



CF-4

- Two 4" C-Channel Feet, 25" Long



BAS-DXC

- Base for a DX Series Enclosure
- Painted Cream

BAS-DDC

- Base for a DD Series Enclosure
- Painted Cream

BAS-DDXC

- Base for a DDX Series Enclosure
- Painted Cream



CB3-DXC

- 3"H – 4 Sided Pedestal Base for DX- Enclosure
- Painted Cream

CB3-DDC

- 3"H – 4 Sided Pedestal Base for DD- Enclosure
- Painted Cream

CB3-DDXC

- 3"H – 4 Sided Pedestal Base for DDX- Enclosure
- Painted Cream

Accessories

Mounting Trays



Part #	Description
MT-D	12" Deep Mounting Tray
MT-DX	20" Deep Mounting Tray
MT-DD	29" Deep Mounting Tray
MT-DDX	37" Deep Mounting Tray
SMT-17	17" Deep Adjustable Single Rail Mounting Tray
BT-2117	17"W X 21"D Single Mid-Mount Rack Battery Tray

Exterior Mounting Shelf



PMS-3030

- For OD, ST, or SOD Series Enclosures
- This shelf can be used in most Indoor or Outdoor Applications
- 14"H X 30"W X 30"D
- Max Weight = 1950 Lbs.

Accessories

AC/DC Distribution



Lineage Power System



Alpha Technologies



Eltek/Valere Power

*For more information about AC/DC Distribution please visit our website:
www.ddbunlimited.com/accessories/acdc-distribution.html*

Batteries



VBB-TEL-12-70



VBB-NSB-100FT



VBB-LDT-12-100FT



VBB-LDT-12-70

Part #	Description
VBB-TEL-12-70	12 V DC - 70AH - 8.01"H x 10.17"W x 6.65"D - 56 Lbs.
VBB-NSB-100FT	12 V DC - 100AH - 15.95"L x 4.25"W x 10.04"H - 66 Lbs.
VBB-TEL-12-105F	12 V DC - 105AH - 4.83"L x 22.51"W x 9"H - 80 Lbs.
VBB-LDT-12-100FT	12 V DC - 105AH - 15.51"L x 4.33"W x 11.26"H - 71 Lbs.
VBB-LDT-12-70	12 V DC - 70AH - 10.2" L x 6.65"W x 8.41"H - 52 Lbs.

Accessories

More Options



CA-4 - Set of Heavy Duty Caster Kit (4)
2 Locking and 2 Standard



DIM pad: vibration dampening mounting feet.



I-Hooks - Lifting Eye-Hooks Kit
Quantity - 4



VIB-25 - Shock Mounted Vibra-Bobbins
for 19" or 23" Racking Rails



COL-4 - 4" Collar to Join 2 Enclosures
Together for Cable Pass Thru



.5 Micron Nylon Replacement Filters
7 1/4"W X 10"H



Alumiflex™

Noticeably lighter than steel,
yet strong enough to rack
even the heaviest equipment.

Alumishield™

Provides superior solar protection
with it's large overhang roof design.

DDB Unlimited Inc. Our Commitment

Customer satisfaction is our number one priority, and continually improving processes to produce quality cabinets that exceed customer expectations is our number one goal.

And we back it up with a 15-Year Product Warranty.



To view our full line
of products visit
www.ddbunlimited.com



A screenshot of the DDB Unlimited website. The header includes the DDB logo, "lte Compatible" badge, and contact information: "OEM / Vertical Rack Mount Enclosure Manufacturer", "Telecom, Traffic, Wimax, LTE, Security", "Outdoor NEMA 3, 3R, 4, 4X Cabinet Enclosures", a "LIVE CHAT" button, and the phone number "800-753-8459". The main content area features a product page for the "LTEE-A (HVAC - Closed Loop)" outdoor enclosure, showing a large white cabinet with a satellite dish. To the right of the product image is a vertical navigation menu with links for "OUTDOOR", "SINGLE BAY", "DOUBLE BAY", "TRIPLE BAY", and "MORE". The left sidebar contains links for "Home", "Contact - Request Quote", "About DDB Unlimited", "Warranty", "News - Trade Shows", "Read About The Miracle", "Customer Reviews", "Downloads", and "Site Map". The bottom section of the page includes "Product Features", "DDB News", "Customer Reviews", and a "Featured Deployment" section with three images of enclosures in use.

8445 Highway 77 North, Wynnewood, OK 73098
T: (800) 753-8459 • F: (877) 220-7236
www.ddbunlimited.com

ISO 9001 Certified • CSA Certified