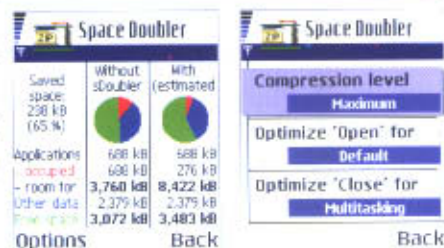


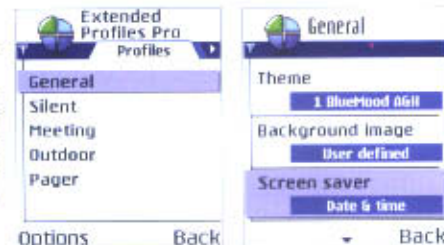
Space Doubler (compatible with Series 60 devices)

Psiloc Space Doubler is the best automatic compression/decompression solution on the market. It saves the precious little memory available in smartphones by keeping application files compressed. Users can choose to compress only some or all of their applications and can optimize the individual compression ratio for either speed or space. Once this is done Psiloc Space Doubler will show its best feature: automatic 'in-flight' operation. The user launches a compressed application just like any other with just a barely noticeable delay as the system unpacks the files. The same happens when closing applications – only in reverse – the files collapse back into a conveniently small size.



Extended Profiles Professional (compatible with Series 60 devices)

Psiloc Extended Profiles Professional brings advanced user profile management to Series 60 handsets significantly enhancing the customization options available in the standard Profiles application. With Psiloc Extended Profiles Professional users can customize their profiles and set them to switch automatically. Any profile can comprise: switch trigger, i.e., time of day, weekday/weekend, date in/out of GSM cell (with Psiloc MiniGPS or Where I Am), background (any image stored in phone memory, also animated), screen saver (with Psiloc Screen Saver a choice of screen savers), sound file as alarm and a different set of alarms for the Clock and the Calendar, keypad autolock on/off, Bluetooth mode on/off, backlight on/off, application(s) to be launched.



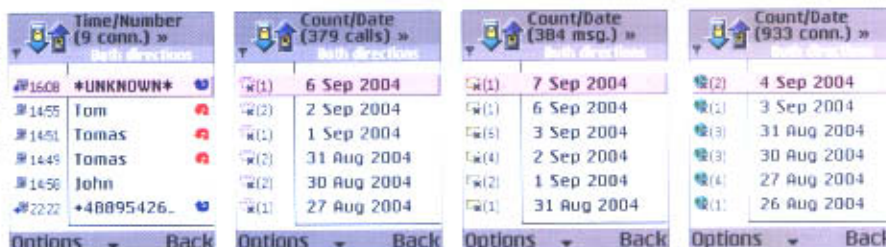
Extended Log (compatible with Series 60 devices)

Psiloc Extended Log expands the functionality of the built-in Log collecting incoming/outgoing call information. Now users can calculate the cost of all connections made. There are three separate modules of Extended Log: Reports, Billing Scheme and Traffic. Reports enables viewing collected information about the outgoing connections filtered or sorted according to the following criteria: Connection date, Call duration, Selected phone number, Connections costs (counted by Billing scheme) Billing scheme is responsible for calculating the costs of the phone calls. It is possible if the user's cost plan by the GSM provider will be properly described inside the Billing scheme. Module TRAFFIC, this is a GPRS monitor that allows monitoring the data sent and received on the ongoing GPRS session.



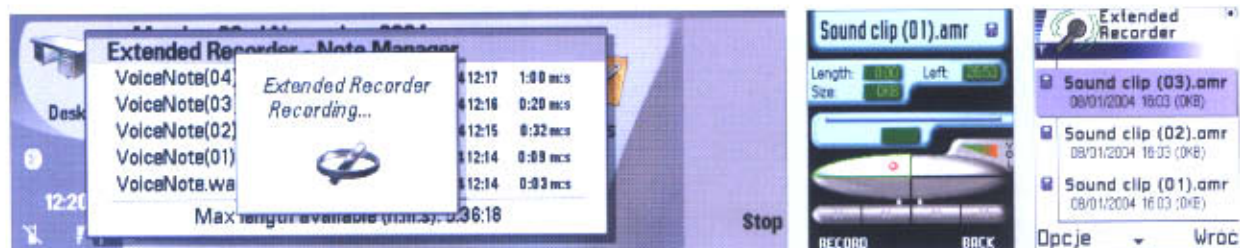
Call Register (compatible with Series 60 devices)

Call Register is a simple yet powerful tool to handle the call history. The application digests call details available in the phone and presents them in ways that are useful. The longest/shortest calls, calls on particular days. User can have them presented at a glance or as reports.



Extended Recorder (compatible with Series 60, 80 devices)

This tool implements a very useful function missing in Series 60 and 80 phones: the ability to make voice notes longer than 60 seconds and to record phone conversations. Psiloc Extended Recorder works like the standard Recorder, but it can do much more. Making a recording is very easy and the only limit is the available memory space, which the Extended Recorder displays as the remaining time available. The application can be used as an answering machine, private, personal, efficient and cheap to use.



Extended Messaging (compatible with UIQ devices)

Extended Messaging implements support for smart messaging on UIQ devices! Extended is a tool enhancing original messaging. It allows user to send and read graphic messages on UIQ. Extended Messaging offers simple editor for creating users own pictures. With Extended Messaging user can save his/her pictures and also import many other formats of pictures and cut parts of them to make new graphic messages. Also Extended Messaging allows to write flash type messages, that means that the flash message will not appear in inbox, but on the front of phone screen.

