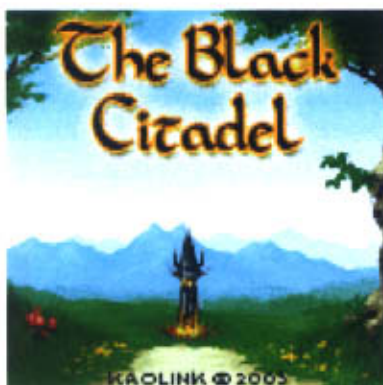




# The Black Citadel

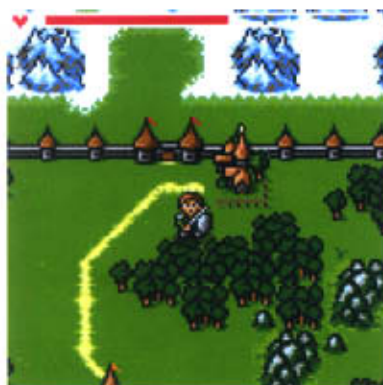


## Game Description

The Black Citadel is a role-playing game set in a fantastic medieval world. You play Kilagu, a hero plunged into the heart of a mysterious adventure.

Throughout the adventure, you will have to talk to the other characters, explore various regions in the realm, discover numerous dungeons and fight a variety of fierce creatures.

Your character will develop as you gain experience, explore dungeons and recover items from the creatures you have defeated.

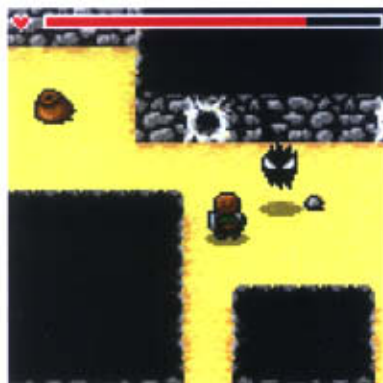


## Genre RPG

**Target** 10-25 - Female/ Male

## Features

- A true quest to be carried out as the plot unfolds
- A character to develop
- One map with different regions and six dungeons to explore
- Confront over a dozen enemies
- Visual fights based on the dexterity of the player
- System of keys, mechanisms and mini-puzzles
- Save option / Player nickname



## Handsets

Nokia series 30/40/60  
Motorola V300/500/525/550/600  
Sharp GX10/15/20/25/30  
Sagem MyV-55/65/75/MyX5-2/MyX4  
Samsung E310/700/710/800  
Panasonic X60  
Sony Ericsson K700i/F500i/Z1010



© KAOLINK 2003

**Languages** FR/EN/ES/DE/IT/NL



## Game score

The Black Citadel is on mobile what Final Fantasy is on console: a cracking RPG, which will take you on a fantastic adventure.

17/20

Mobilejv.com

Документ взят из архива